

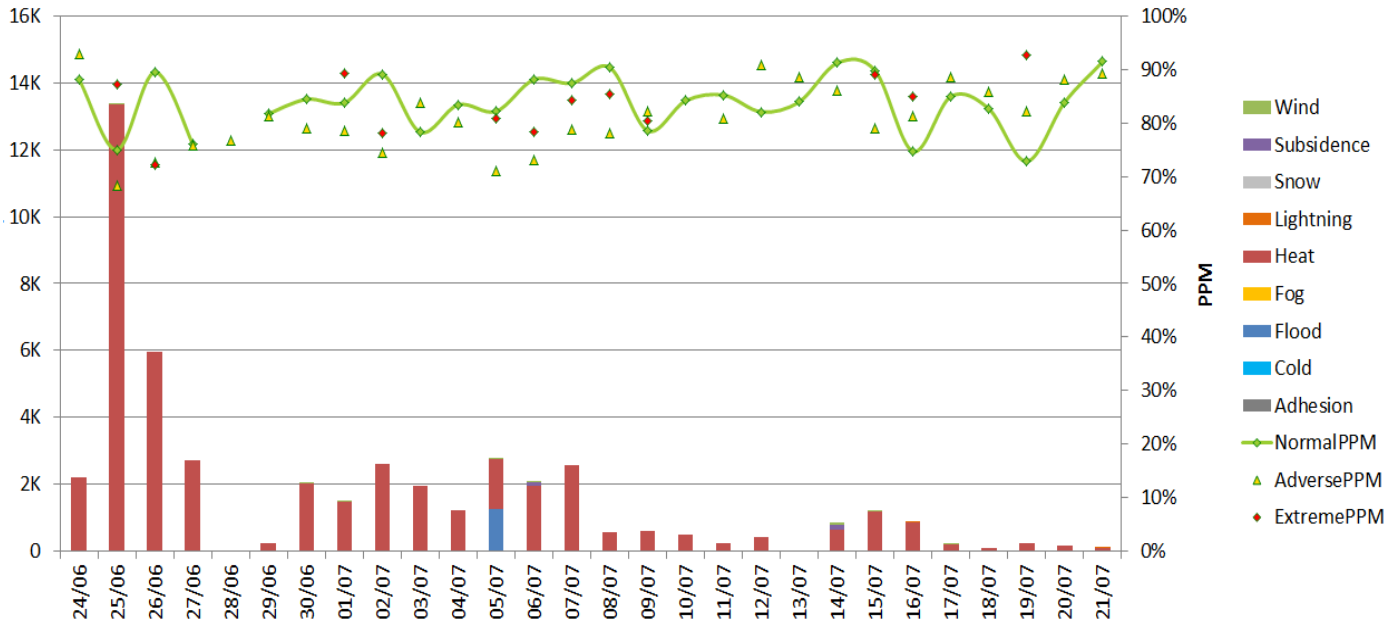


# Weather Resilience and Climate Change Adaptation

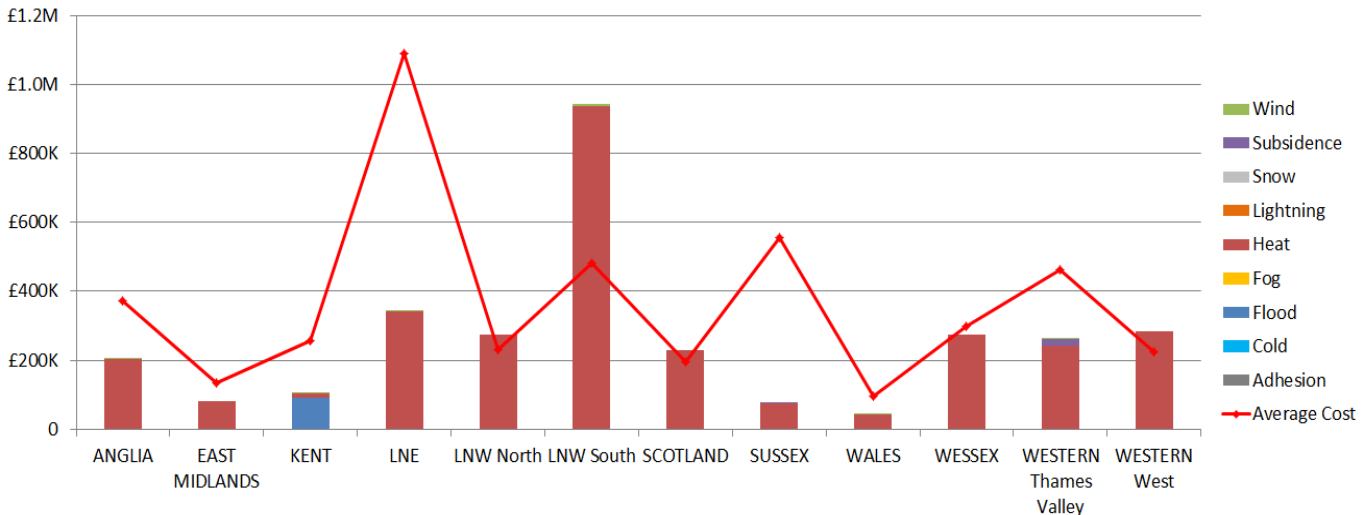
## National Periodic Performance Report – 2018/2019 P4

Figure 1 provides an overview of the impact of different weather related events by day for period 4 in relation to delay minutes and PPM performance nationally. If adverse/extreme conditions were experienced by one or more TOC during a week, a yellow or red dot will indicate the performance of the TOC(s) in question. Weather events don't always cause drops in performance (e.g. extreme rainfall may not flood the railway) and therefore, performance on adverse/extreme days can be higher than expected.

**Figure 1 Weather related PPM and delay minutes for P4 2018**



**Figure 2 Weather related Schedule 8 cost impact P4 National**



Note that this figure relates to Schedule 8 cost and does not include OPEX or other costs.