



Weather Resilience and Climate Change Adaptation

Western Route Periodic Performance Report – 2018/2019 P7

Figure 1 provides an overview of the impact of different weather related events by day for period 7 in relation to delay minutes and PPM performance for Western route. If adverse/extreme conditions were experienced by one or more TOC during a week, a yellow or red dot will indicate the performance of the TOC(s) in question. Weather events don't always cause drops in performance (e.g. extreme rainfall may not flood the railway) and therefore, performance on adverse/extreme days can be higher than expected.

Figure 1 Weather related PPM and delay minutes for P7 2018 Western

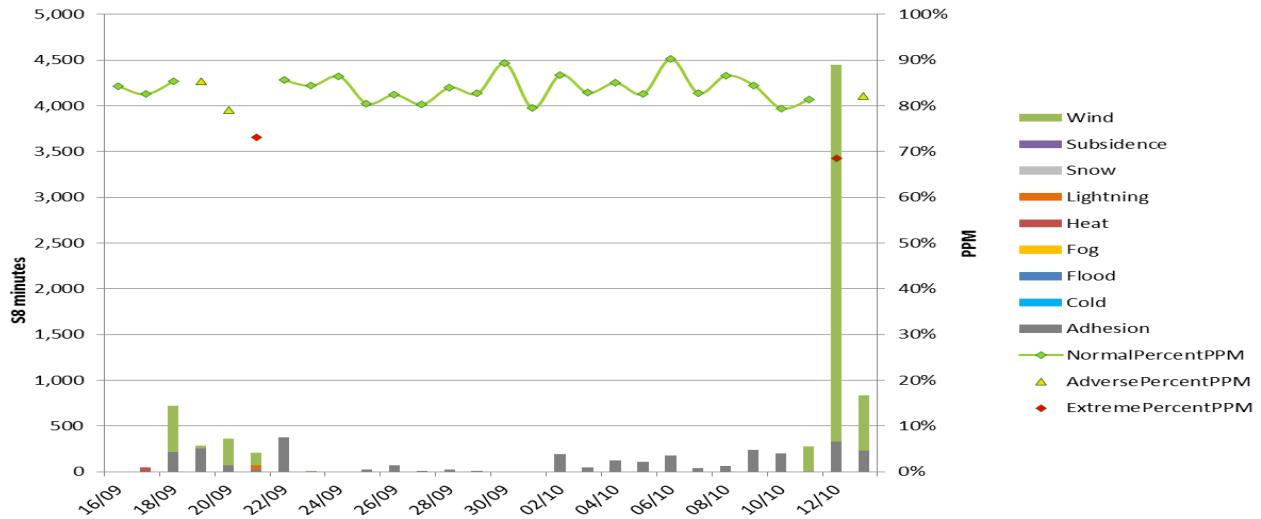
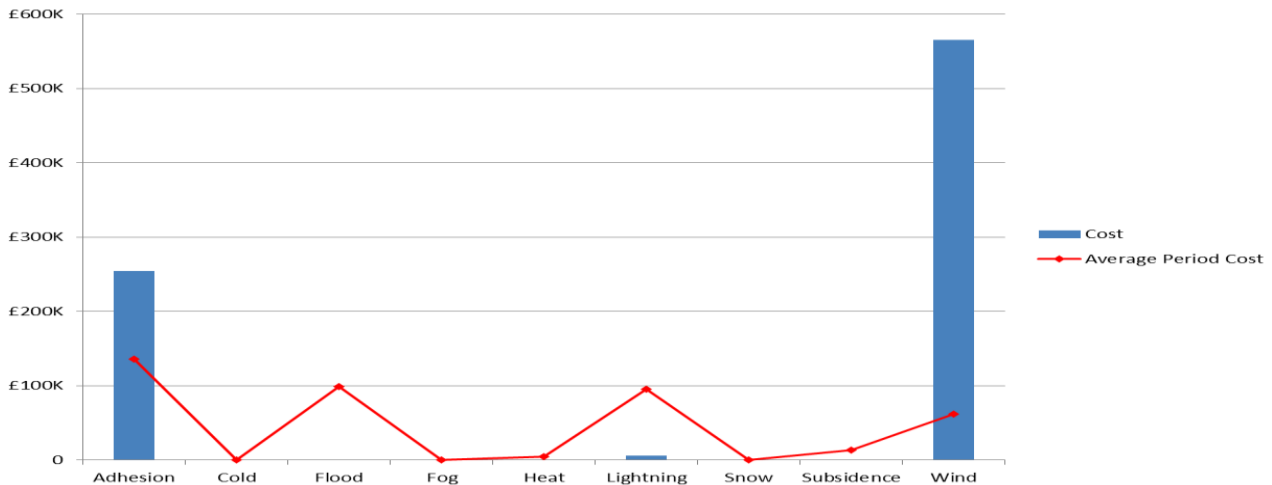


Figure 2 Weather related Schedule 8 cost impact for P7 Western



Note that this figure relates to Schedule 8 cost and does not include OPEX or other costs.

Table 1 Top 10 weather related incidents P7

Date	IncidentDescription	stanoxSection	Route	Weather Category	Delay Minutes	Cost
12/10/2018	50MPH BLANKLET SPEED PNZ PLY	Truro : Camborne	WESTERN West	Wind	2554.5	£314,477.63
12/10/2018	PLY POWER CABLES ON THE LINE	Plymouth : Saltash	WESTERN West	Wind	771	£108,012.95
18/09/2018	1C13 ADD ACTIVATION HTRWAJN	Heathrow Airport Jn	WESTERN Thames Valley	Wind	499	£47,935.92
22/09/2018	1A75 ADHESION DAINNT	Newton Abbot	WESTERN West	Adhesion	320	£38,445.53
12/10/2018	WOS NRTNJ TREE ON LINE	Worcester Shrub Hill : Norton Jn	WESTERN West	Wind	490	£27,457.43
12/10/2018	HEMERDND PRHC	Totnes : AISH EMERGENCY CROSSOVER	WESTERN West	Adhesion	159	£19,982.04
21/09/2018	CHALLOW DID TREE ON LINE	Didcot Parkway : Challow	WESTERN Thames Valley	Wind	118	£19,840.66
20/09/2018	WMN 1V81 AIR LEAK	Warminster	WESTERN Thames Valley	Wind	280.5	£16,016.13
19/09/2018	1A96 ADHESION TOT NTA	Newton Abbot : Totnes	WESTERN West	Adhesion	99.5	£14,852.32
18/09/2018	1P18 SPARKS LED	Ledbury	WESTERN West	Adhesion	177	£14,383.48