



Weather Resilience and Climate Change Adaptation

Wessex Route Periodic Performance Report – 2018/2019 P7

Figure 1 provides an overview of the impact of different weather related events by day for period 7 in relation to delay minutes and PPM performance for Wessex route. If adverse/extreme conditions were experienced by one or more TOC during a week, a yellow or red dot will indicate the performance of the TOC(s) in question. Weather events don't always cause drops in performance (e.g. extreme rainfall may not flood the railway) and therefore, performance on adverse/extreme days can be higher than expected.

Figure 1 Weather related PPM and delay minutes for P7 2018 Wessex

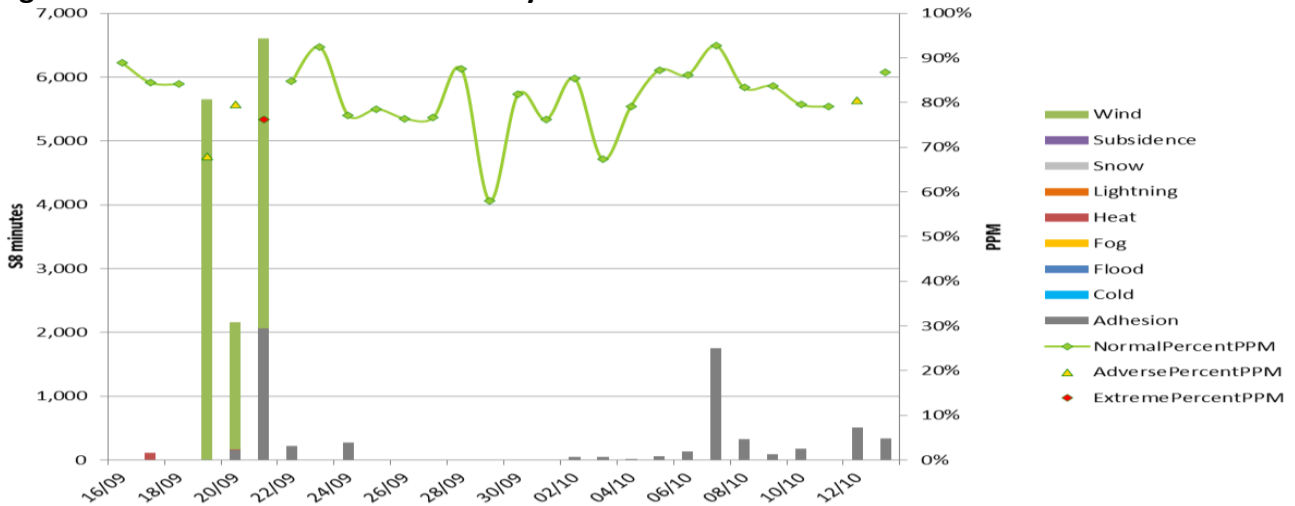
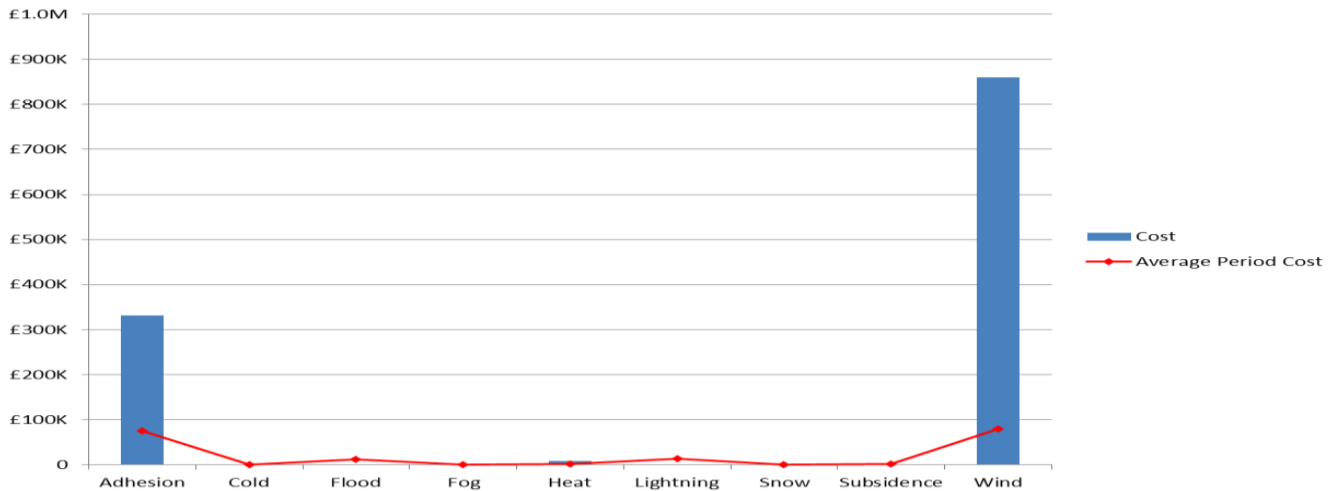


Figure 2 Weather related Schedule 8 cost impact for P7 Wessex



Note that this figure relates to Schedule 8 cost and does not include OPEX or other costs.

Table 1 Top 10 weather related incidents P7

Date	IncidentDescription	stanoxSection	Route	Weather Category	Delay Minutes	Cost
19/09/2018	CLJ-EAD TREE ON LINE DMS	Clapham Junction : Wimbledon	WESSEX	Wind	4675	£359,042.44
21/09/2018	PTR-HSL TREE ON LINE UL	Haslemere : Petersfield	WESSEX	Wind	1162.5	£94,079.57
07/10/2018	ESL-ROM PC TCF SL LFC	Eastleigh : Romsey	WESSEX	Adhesion	1742	£84,526.09
21/09/2018	CRN GB1 TC FLR UB LFC	Wokingham : Ash	WESSEX	Adhesion	1934	£80,490.69
20/09/2018	WESSEX BLANKET SPEED WIND	Basingstoke	WESSEX	Wind	1037	£75,654.83
19/09/2018	HAM TREE ON LINE DL	Hamworthy B.C.I	WESSEX	Wind	937	£74,515.27
21/09/2018	5L91 SPECIAL TRAIN SAL-GIL	Gillingham (Dorset) : Salisbury	WESSEX	Wind	692.5	£40,596.16
20/09/2018	WKM TREE ON LINE	Wokingham	WESSEX	Wind	833	£38,491.34
21/09/2018	FNC-HSL TREE ON LINE DL	Farncombe : Haslemere	WESSEX	Wind	487.5	£36,187.87
21/09/2018	RDNGSJN-WKM TREE ON LINE UL	Reading Spur Jn : Wokingham	WESSEX	Wind	490	£32,938.82