

# Safety Advice

Action required following a serious incident



## Lifesaving rules – Test before touch on 25kV OLE

**Issued to:** All Network Rail line managers, safety professionals and RISQS registered contractors

**Ref:** NRA 18/12

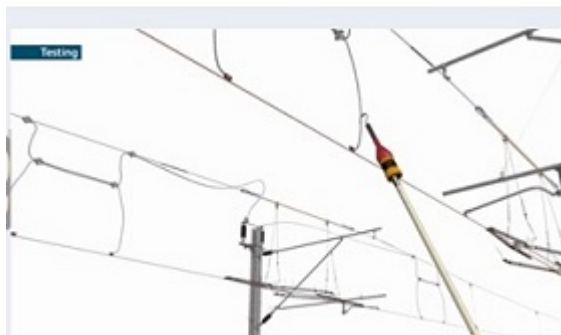
**Date of issue:** 19/07/2018

**Location:** National

**Contact:** [Phil Doughty](#), Head of Contact Systems AC/DC



Never assume equipment is isolated – always test before touch.



## Overview

Feedback from front line staff has indicated that the lifesaving rule for test before touch on 25kV is not being applied in a consistent manner.

The lifesaving rule: test before touch, for 25kV is a key control for managing the risk of working on or near electrified lines.

It should be noted that all approved live line indicators only indicate live or de-energised. They do not indicate that the equipment is safe to touch.

When any approved live line indicator confirms de-energised there could still be dangerous voltages in the equipment.

Following the five-step process below ensures the safety of the staff working on or near 25kV equipment using a live line indicator.

## Immediate action required

All staff should be applying test before touch in accordance with the guide to the [application of the electrical lifesaving rules](#).

When test before touch is applied as detailed in the application guide and referenced standards then the rule is a robust process to confirm the equipment is safe to touch.

The lifesaving rule for test before touch on 25kV is a five-step process:

1. Test before earth – to ensure the equipment is de-energised before applying an earth.
2. Apply earths – eliminate the risk of residual voltage.

3. Always be sure the required plans and permits are in place, before you start a job or go on or near the line – For 25kV equipment this means ensure that you have a Form C in accordance with NR/L3/ELP/29987 which details the limits of the isolation.

4. Test before approach – a check that you are in the right location as per your Form C isolation limits.

5. Retest if you move beyond any inline OLE feature, move to different track or work on a different conductor.

Copies of Safety Advice are available on [Safety Central](#).