



Weather Resilience and Climate Change Adaptation

Wessex Route Periodic Performance Report – 2018/2019 P4

Figure 1 provides an overview of the impact of different weather related events by day for period 4 in relation to delay minutes and PPM performance for Wessex route. If adverse/extreme conditions were experienced by one or more TOC during a week, a yellow or red dot will indicate the performance of the TOC(s) in question. Weather events don't always cause drops in performance (e.g. extreme rainfall may not flood the railway) and therefore, performance on adverse/extreme days can be higher than expected.

Figure 1 Weather related PPM and delay minutes for P4 2018

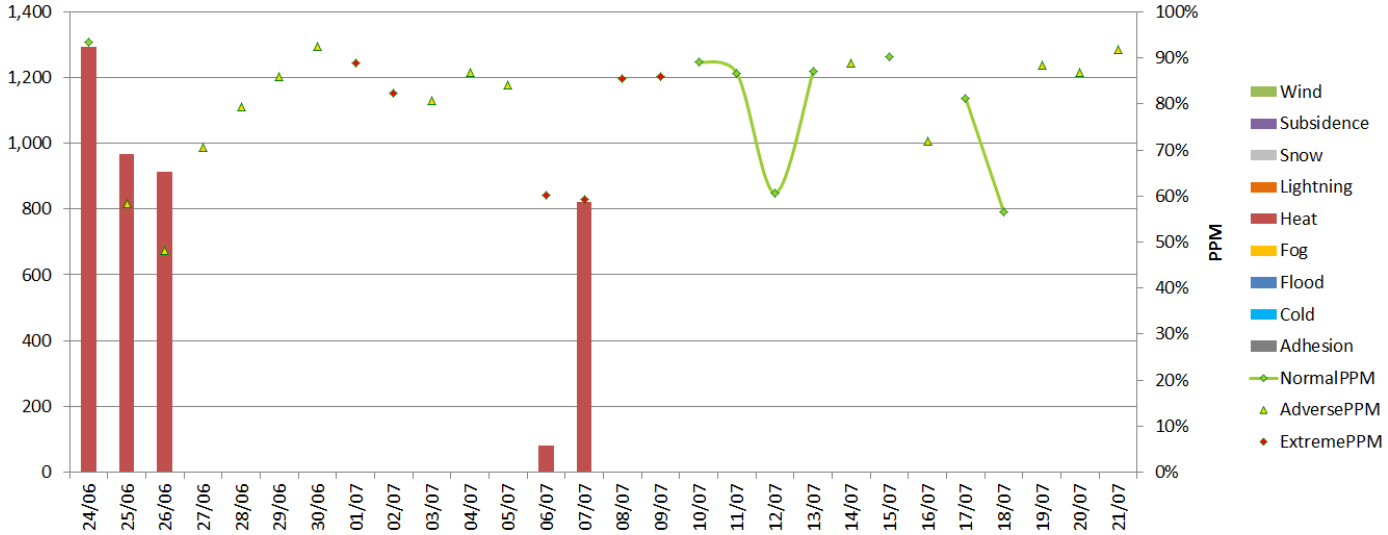
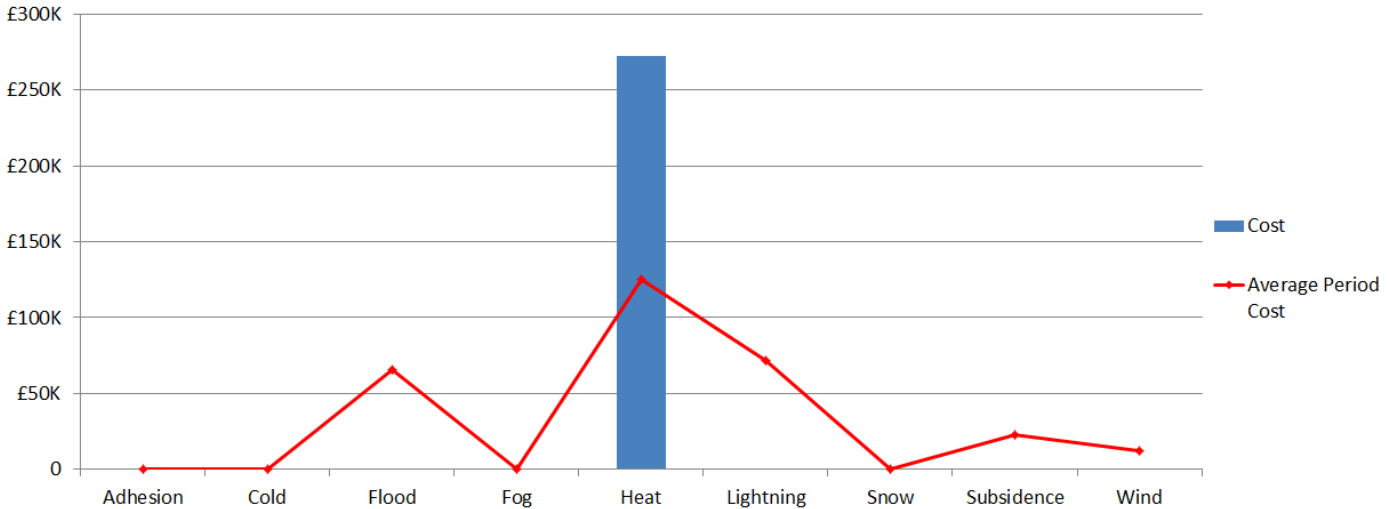


Figure 2 Weather related Schedule 8 cost impact for P4 Wessex



Note that this figure relates to Schedule 8 cost and does not include OPEX or other costs.

Table 1 Top 10 weather related incidents P4

Date	IncidentDescription	stanoxSection	Route	Weather Category	Delay Minutes	Cost
24/06/2018	WESSEX HEAT SPEED WAT	London Waterloo	WESSEX	Heat	1293	£103,489.96
07/07/2018	ESL 20 MPH HEAT SPEED WXESR879	Eastleigh	WESSEX	Heat	721	£48,192.27
25/06/2018	YVP-DCW HEAT SPEED SL	Yeovil Pen Mill : Maiden Newton	WESSEX	Heat	892	£42,195.78
26/06/2018	MIC-WIN HEAT SPEED DM	Worting Jn : Winchester	WESSEX	Heat	593	£42,068.73
26/06/2018	NINEELMSJ HEAT SPEED DWF WX864	Nine Elms Jn	WESSEX	Heat	278	£19,002.58
07/07/2018	ESL-SDN HEAT SPEED DF	Eastleigh : St Denys	WESSEX	Heat	100	£5,550.89
25/06/2018	WAT-VXH HEAT SPEED DWF	London Waterloo : Vauxhall	WESSEX	Heat	72	£5,156.65
26/06/2018	MIM 30/60MPH ESR HEAT	Moreton-In-Marsh	WESSEX	Heat	41	£4,183.59
06/07/2018	FRM-BOT 20-MPH HEAT SPEED	Botley : Fareham	WESSEX	Heat	80	£2,656.21
25/06/2018	WSX HEAT SPEED CAPES 25/06	London Waterloo	WESSEX	Heat	3	£244.14