



Weather Resilience and Climate Change Adaptation

Wessex Route Periodic Performance Report – 2018/2019 P2

Figure 1 provides an overview of the impact of different weather related events by day for period 2 in relation to delay minutes and PPM performance for Wessex route. If adverse/extreme conditions were experienced by one or more TOC during a week, a yellow or red dot will indicate the performance of the TOC(s) in question. Weather events don't always cause drops in performance (e.g. extreme rainfall may not flood the railway) and therefore, performance on adverse/extreme days can be higher than expected.

Figure 1 Weather related PPM and delay minutes for P2 2018

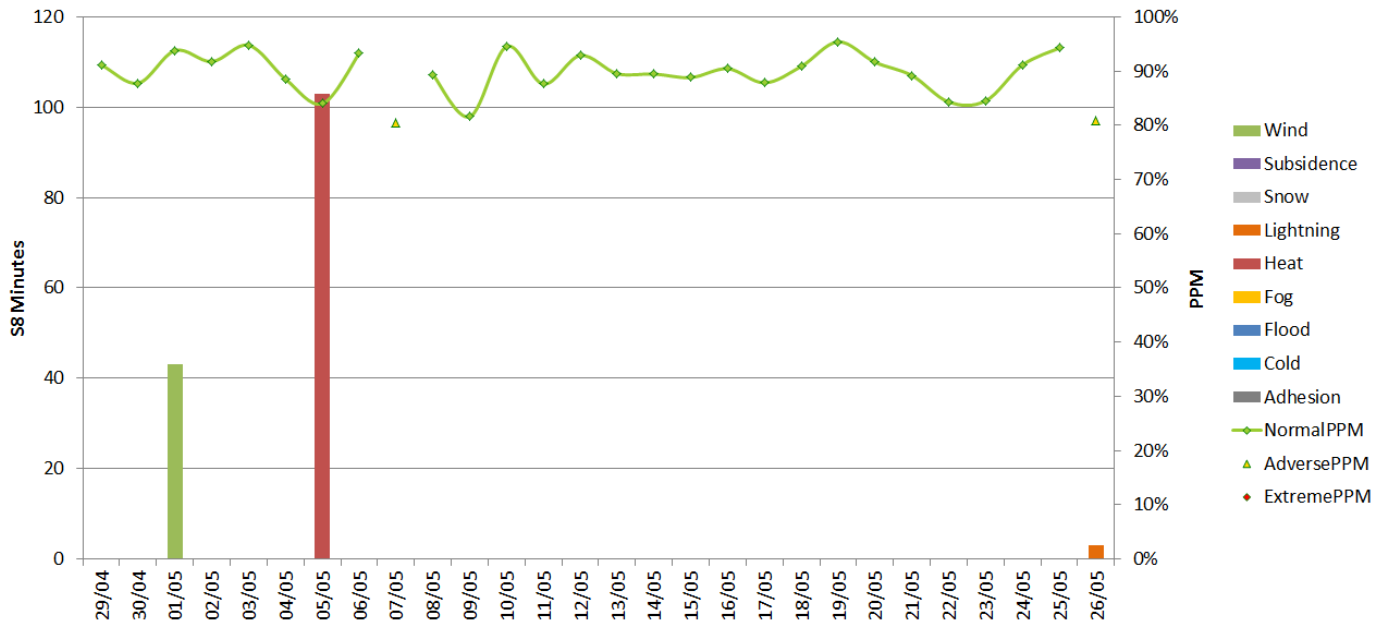
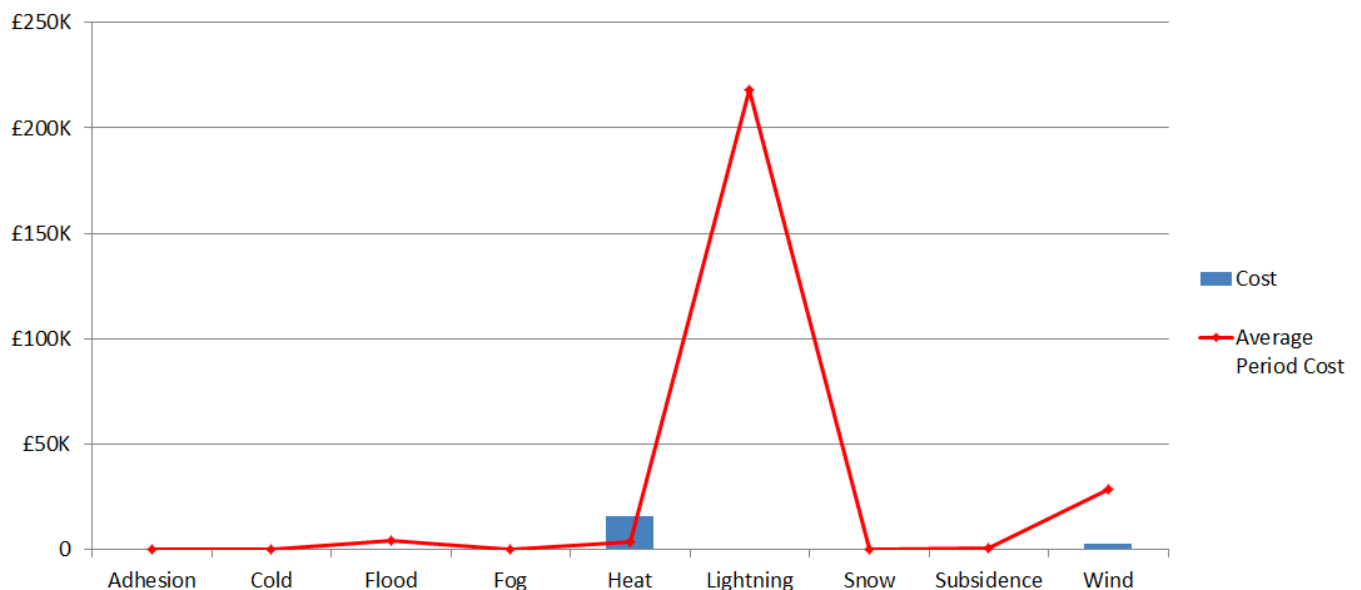


Figure 2 Weather related Schedule 8 cost impact for P2 Wessex



Note that this figure relates to Schedule 8 cost and does not include OPEX or other costs.

Table 1 Top 10 weather related incidents P2

Date	IncidentDescription	stanoxSection	Route	Weather Category	Delay Minutes	Cost
05/05/2018	GFD PROY 20 MPH HEAT SPEED	Ladbroke Grove : Acton West	WESSEX	Heat	103	£15,880.81
01/05/2018	SDN OBJECT ON LINE DF	Eastleigh : St Denys	WESSEX	Wind	43	£2,860.98