



Weather Resilience and Climate Change Adaptation

Wessex Route Periodic Performance Report – 2017/2018 P1

Figure 1 provides an overview of the impact of different weather related events by day for period 1 in relation to delay minutes and PPM performance for Wessex route. If adverse/extreme conditions were experienced by one or more TOC during a week, a yellow or red dot will indicate the performance of the TOC(s) in question. Weather events don't always cause drops in performance (e.g. extreme rainfall may not flood the railway) and therefore, performance on adverse/extreme days can be higher than expected.

Figure 1 Weather related PPM and delay minutes for P1 2017 Wessex

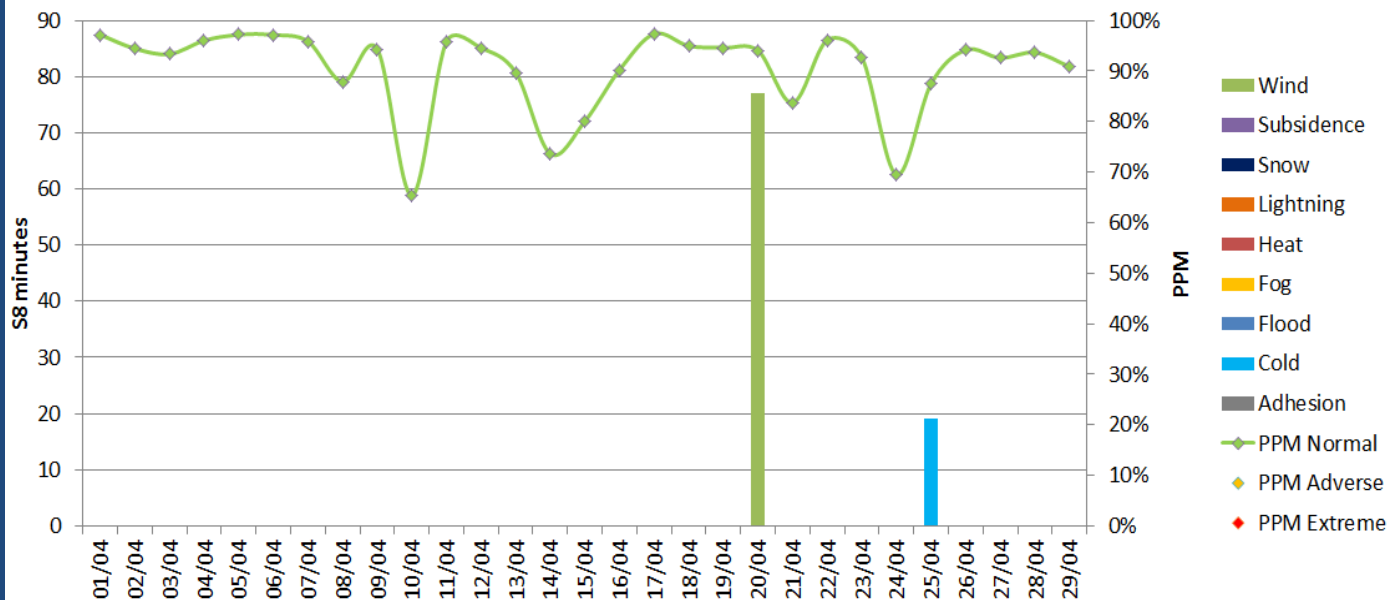
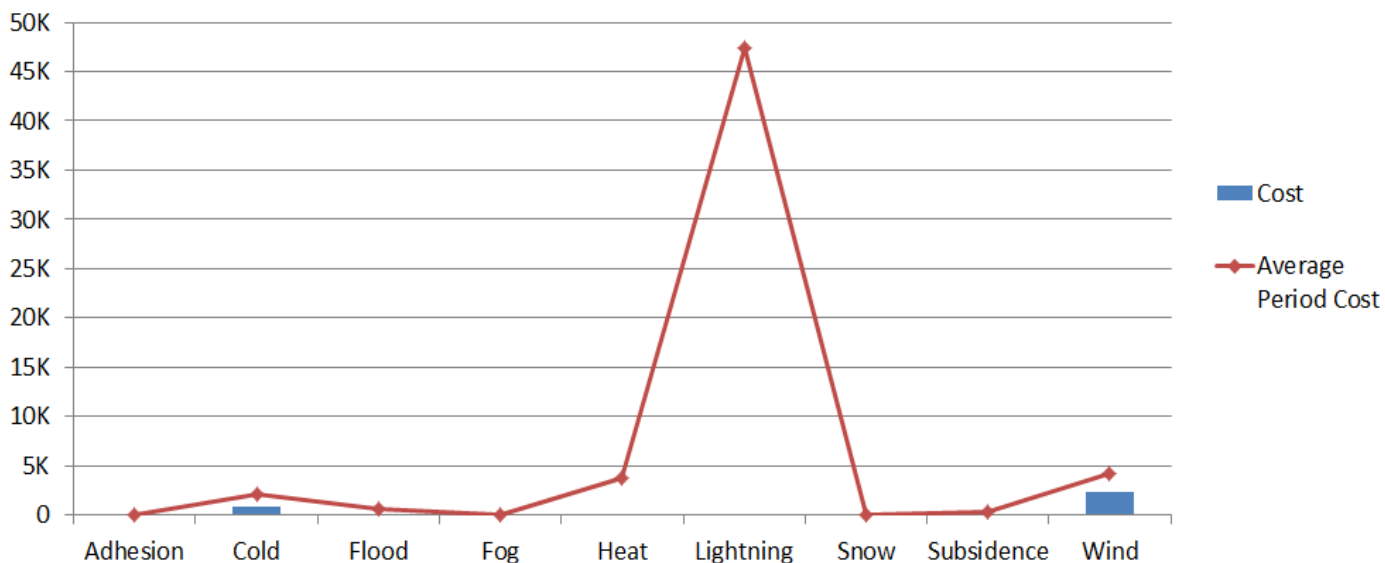


Figure 2 Weather related Schedule 8 cost impact for P1 Wessex



Note that this figure relates to Schedule 8 cost and does not include OPEX or other costs.

Table 1 Top 10 weather related incidents P1

Date	IncidentDescription	stanoxSection	Weather Category	Minutes	Cost
20/04/2017	WOK OBJECT ON LINE PLT 1	Woking	Wind	77	£2,275.08
25/04/2017	MDN-YVP WEATHER S/L	Yeovil Pen Mill : Maiden Newton	Cold	19	£823.29



Weather Resilience and Climate Change Adaptation

Wessex Route Periodic Performance Report – 2017/2018 P2

Figure 1 provides an overview of the impact of different weather related events by day for period 2 in relation to delay minutes and PPM performance for Wessex route. If adverse/extreme conditions were experienced by one or more TOC during a week, a yellow or red dot will indicate the performance of the TOC(s) in question. Weather events don't always cause drops in performance (e.g. extreme rainfall may not flood the railway) and therefore, performance on adverse/extreme days can be higher than expected.

Figure 1 Weather related PPM and delay minutes for P2 2017 Wessex

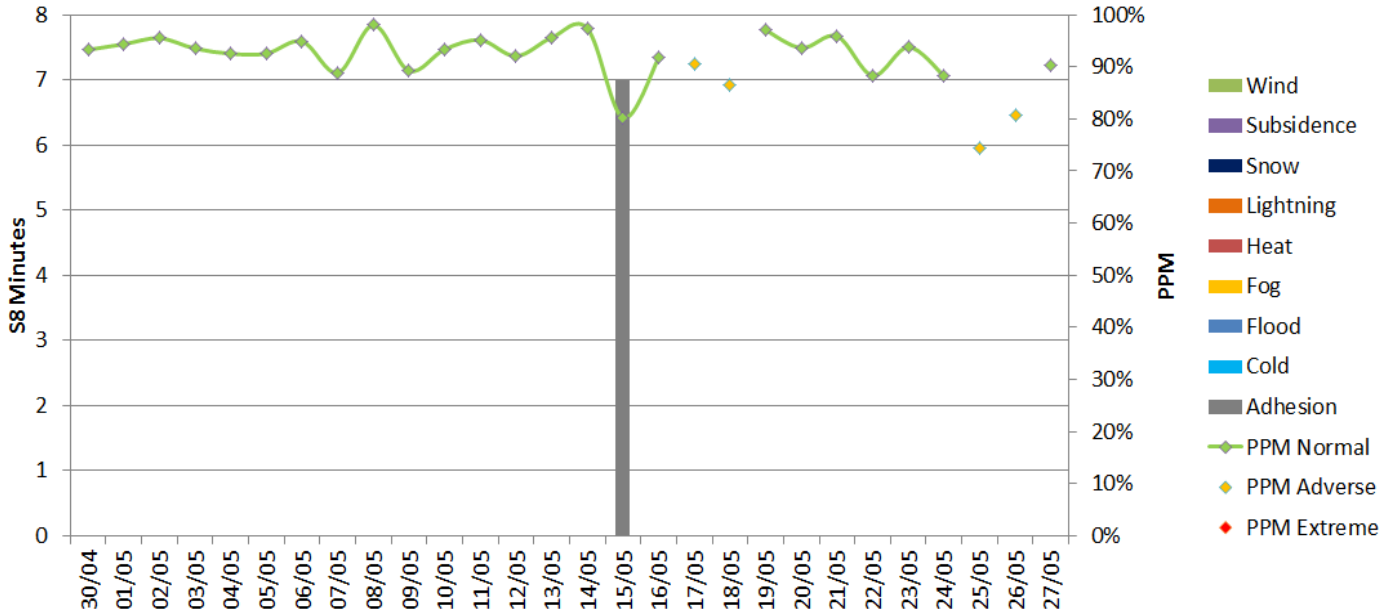
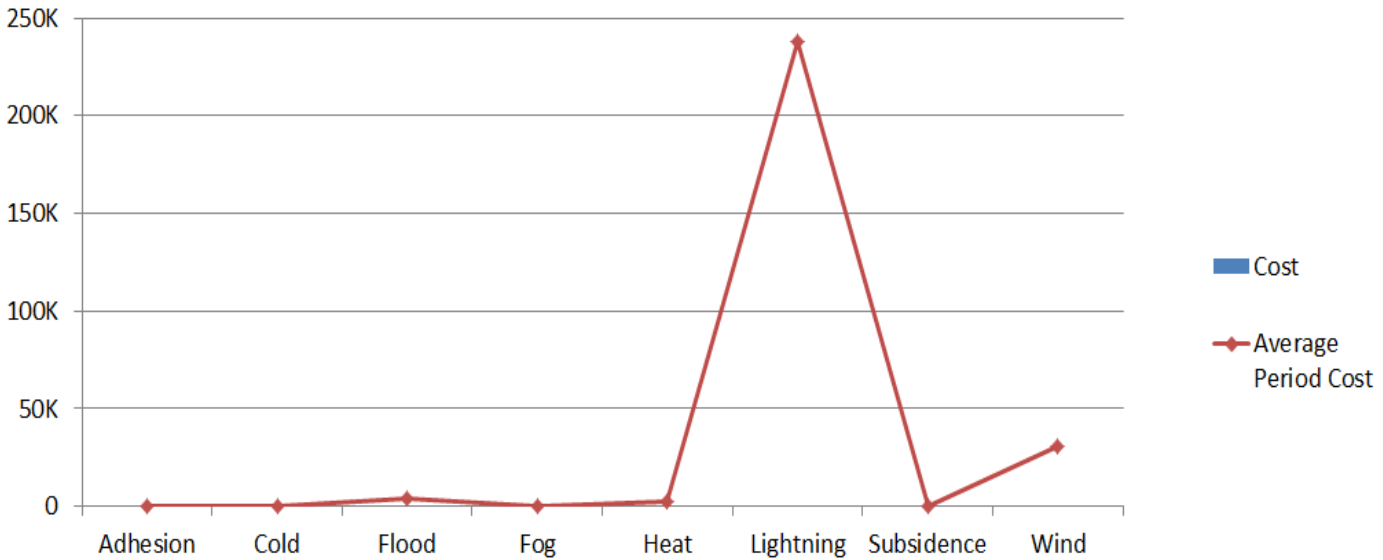


Figure 2 Weather related Schedule 8 cost impact for P2 Wessex



Note that this figure relates to Schedule 8 cost and does not include OPEX or other costs.

Table 1 Top 10 weather related incidents P2

Date	IncidentDescription	stanoxSection	Weather Category	Minutes	Cost
15/05/2017	5Y96/1Y97 SCHEDULE PAD	Ladbroke Grove : Acton West	Adhesion	7	£110.67

Weather Resilience and Climate Change Adaptation

Wessex Route Periodic Performance Report – 2017/2018 P3

Figure 1 provides an overview of the impact of different weather related events by day for period 3 in relation to delay minutes and PPM performance for Wessex route. If adverse/extreme conditions were experienced by one or more TOC during a week, a yellow or red dot will indicate the performance of the TOC(s) in question. Weather events don't always cause drops in performance (e.g. extreme rainfall may not flood the railway) and therefore, performance on adverse/extreme days can be higher than expected.

Figure 1 Weather related PPM and delay minutes for P3 2017 Wessex

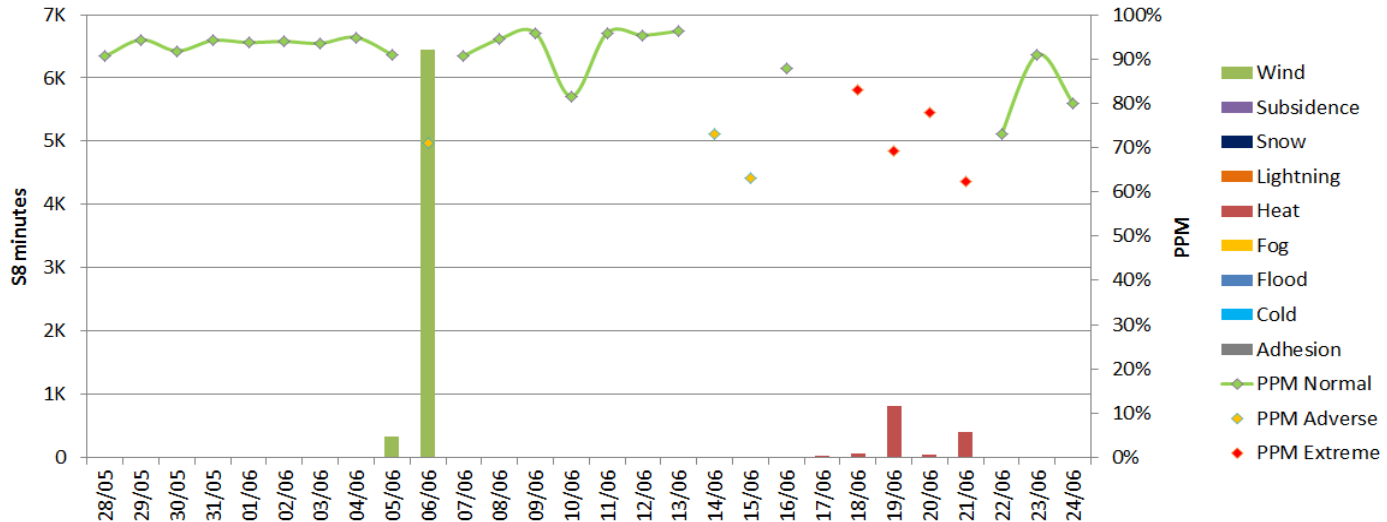
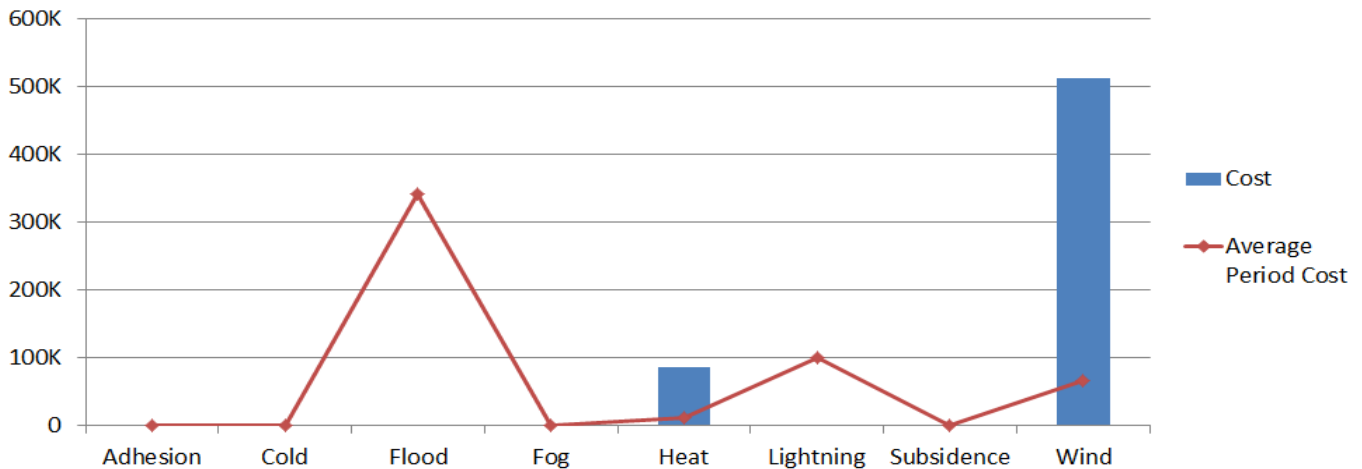


Figure 2 Weather related Schedule 8 cost impact for P3 Wessex



Note that this figure relates to Schedule 8 cost and does not include OPEX or other costs.

Table 1 Top 10 weather related incidents P3

Date	IncidentDescription	stanoxSection	Weather Category	Minutes	Cost
06/06/2017	GLD-WPL TREE ON LINE ALL	Guildford	Wind	4066	£316,944.81
06/06/2017	STW TREE ON LINE UL	Strawberry Hill	Wind	1291.5	£103,735.56
19/06/2017	HSL-WTY HEAT SPEED UL	Farncombe : Haslemere	Heat	371	£32,195.98
06/06/2017	BNS-BFD TREE ON LINE BOTH	Brentford : Barnes	Wind	401.5	£29,873.60
19/06/2017	NEM-SUR HEAT SPEED DMF	New Malden : Surbiton	Heat	385	£24,718.88
21/06/2017	YPV-DCW HEAT SPEED UL	Maiden Newton : Dorchester West	Heat	395	£16,742.53
06/06/2017	WYLYEXING-UPTNLOV TREE ON LINE	Wylye Ahb : Upton Lovell	Wind	283	£10,688.33
06/06/2017	BAG-ACT TREE ON LINE UM	Ascot	Wind	118	£9,813.31
05/06/2017	1L72 STRUCK TREE PIN-HON	Pinhoe : Honiton	Wind	144.5	£8,281.98
06/06/2017	2D32 TREE ON THE LINE EFF-LHD	Effingham Junction : Leatherhead	Wind	65	£5,795.40



Weather Resilience and Climate Change Adaptation

Wessex Route Periodic Performance Report – 2017/2018 P4

Figure 1 provides an overview of the impact of different weather related events by day for period 4 in relation to delay minutes and PPM performance for Wessex route. If adverse/extreme conditions were experienced by one or more TOC during a week, a yellow or red dot will indicate the performance of the TOC(s) in question. Weather events don't always cause drops in performance (e.g. extreme rainfall may not flood the railway) and therefore, performance on adverse/extreme days can be higher than expected.

Figure 1 Weather related PPM and delay minutes for P4 2017 Wessex

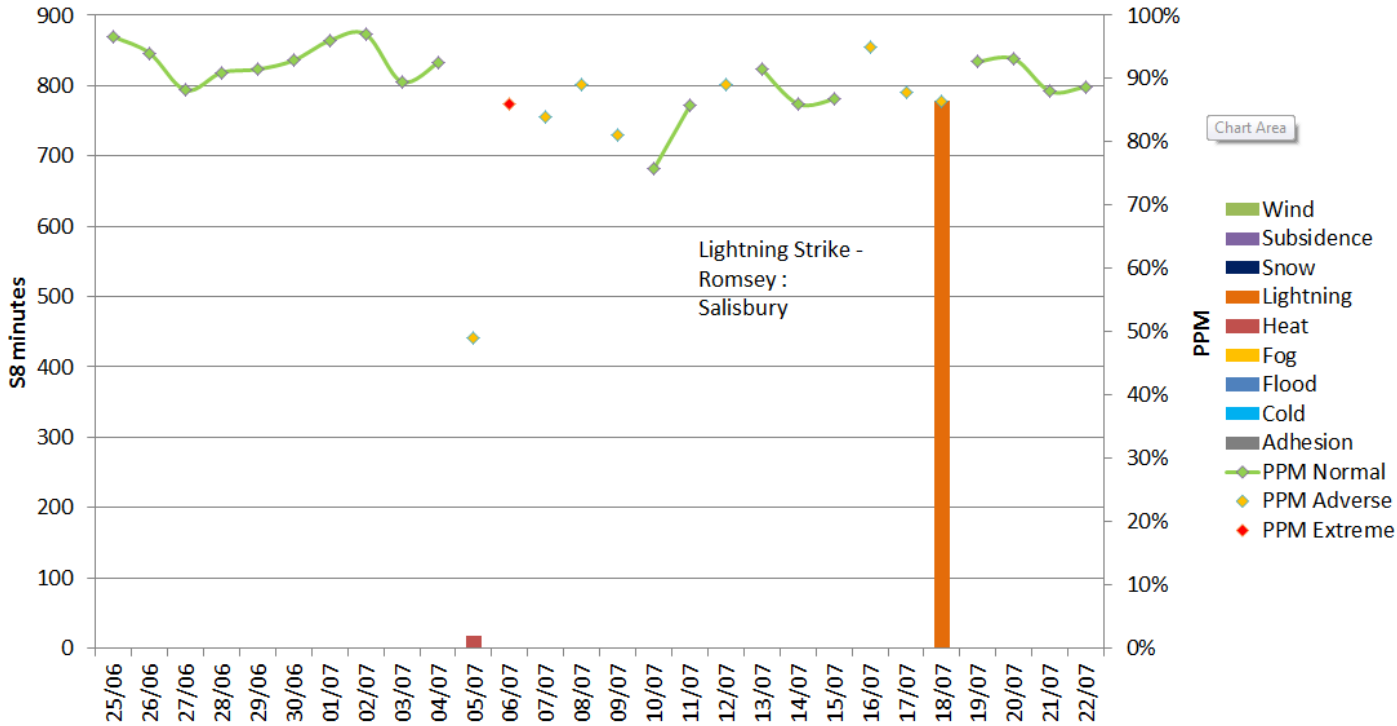
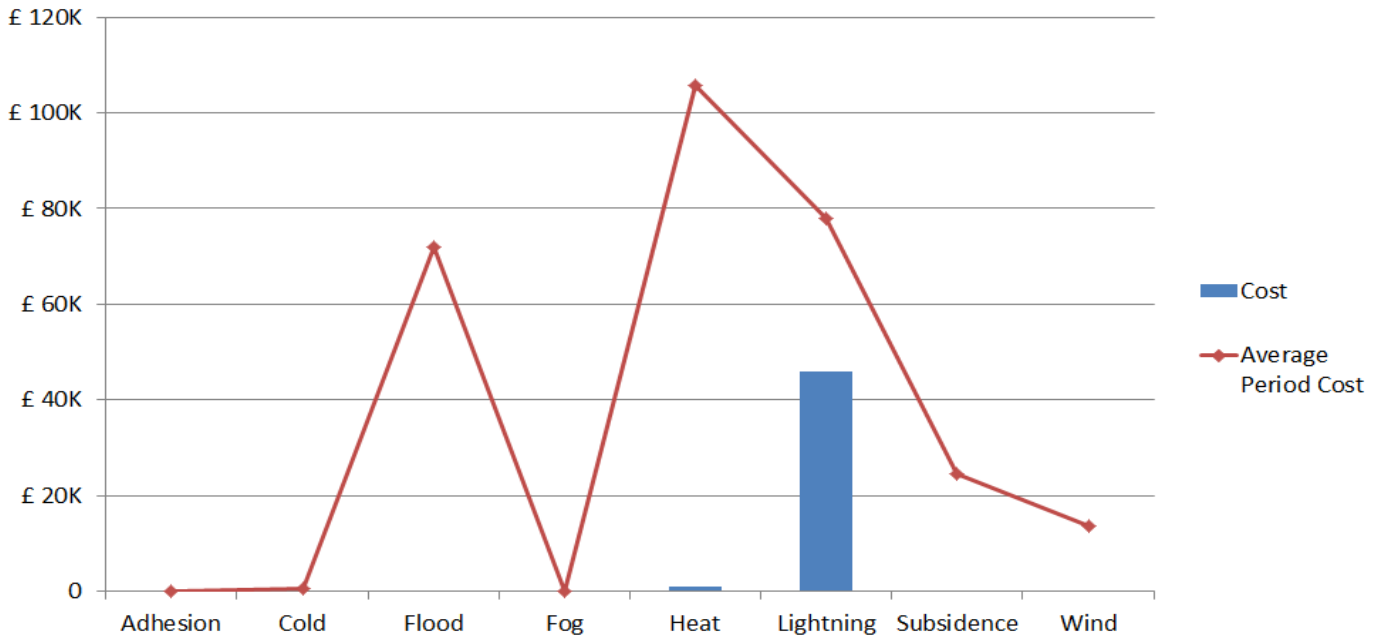


Figure 2 Weather related Schedule 8 cost impact for P4 Wessex



Note that this figure relates to Schedule 8 cost and does not include OPEX or other costs.



Weather Resilience and Climate Change Adaptation

Wessex Route Periodic Performance Report – 2017/2018 P5

Figure 1 provides an overview of the impact of different weather related events by day for period 5 in relation to delay minutes and PPM performance for Wessex route. If adverse/extreme conditions were experienced by one or more TOC during a week, a yellow or red dot will indicate the performance of the TOC(s) in question. Weather events don't always cause drops in performance (e.g. extreme rainfall may not flood the railway) and therefore, performance on adverse/extreme days can be higher than expected.

Figure 1 Weather related PPM and delay minutes for P5 2017 Wessex

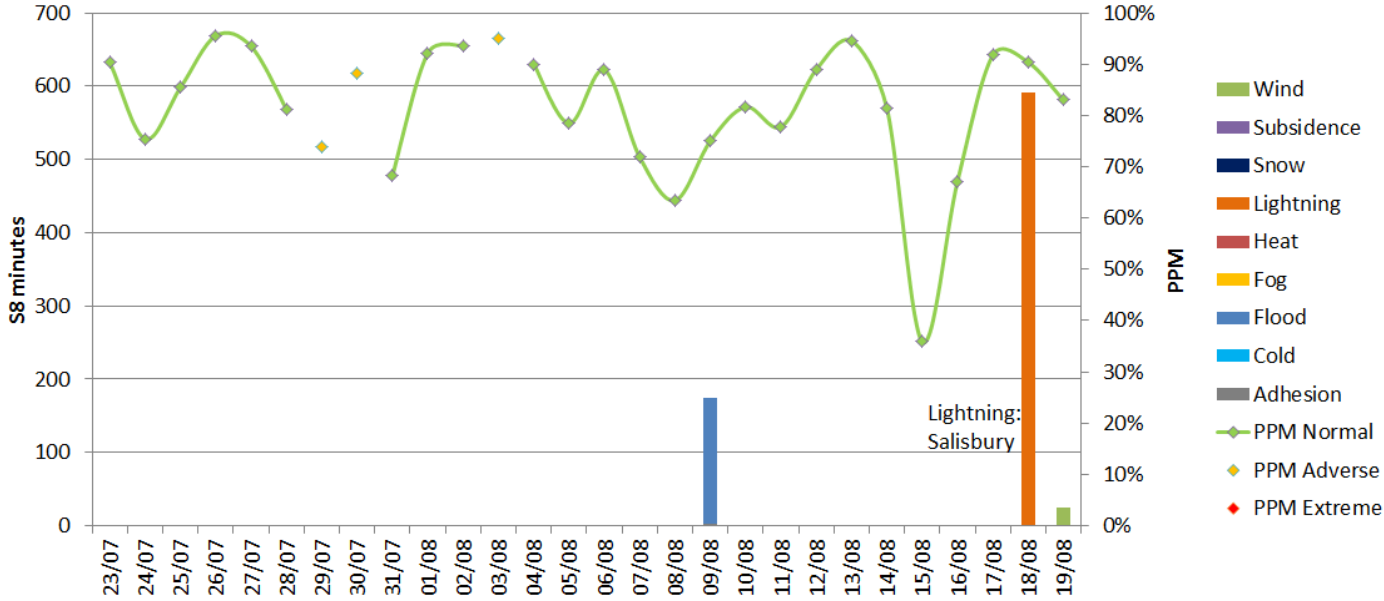
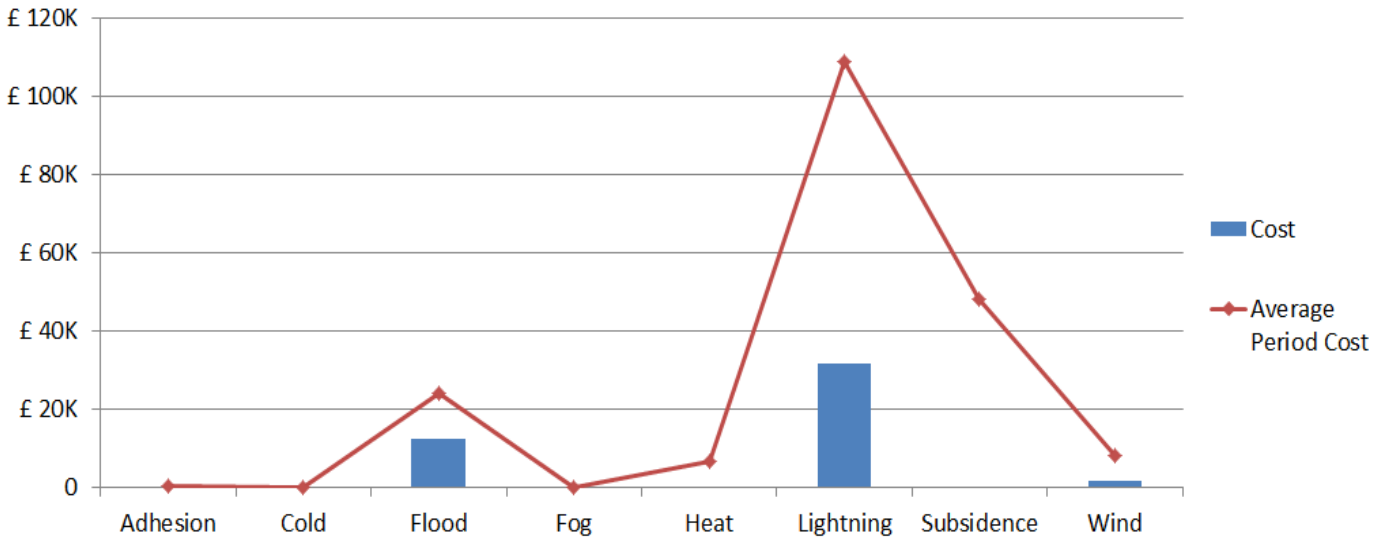


Figure 2 Weather related Schedule 8 cost impact for P5 Wessex



Note that this figure relates to Schedule 8 cost and does not include OPEX or other costs.

Table 1 Top 10 weather related incidents P5

Date	IncidentDescription	stanoxSection	Weather Category	Minutes	Cost
18/08/2017	SAL LIGHTING STRIKE	Salisbury	Lightning	592	£31,762.46
09/08/2017	FLW-HMP SEVERE FLOODING	Hampton : Fulwell	Flood	173	£12,508.40
19/08/2017	SNY TREE ON LINE UL	Feltham	Wind	24	£1,709.04
09/08/2017	1E36 LOST 1 WRTING-BSK	Basingstoke : Worting Jn	Adhesion	2	£65.96



Weather Resilience and Climate Change Adaptation

Wessex Route Periodic Performance Report – 2017/2018 P6

Figure 1 provides an overview of the impact of different weather related events by day for period 6 in relation to delay minutes and PPM performance for Wessex route. If adverse/extreme conditions were experienced by one or more TOC during a week, a yellow or red dot will indicate the performance of the TOC(s) in question. Weather events don't always cause drops in performance (e.g. extreme rainfall may not flood the railway) and therefore, performance on adverse/extreme days can be higher than expected.

Figure 1 Weather related PPM and delay minutes for P6 2017 Wessex

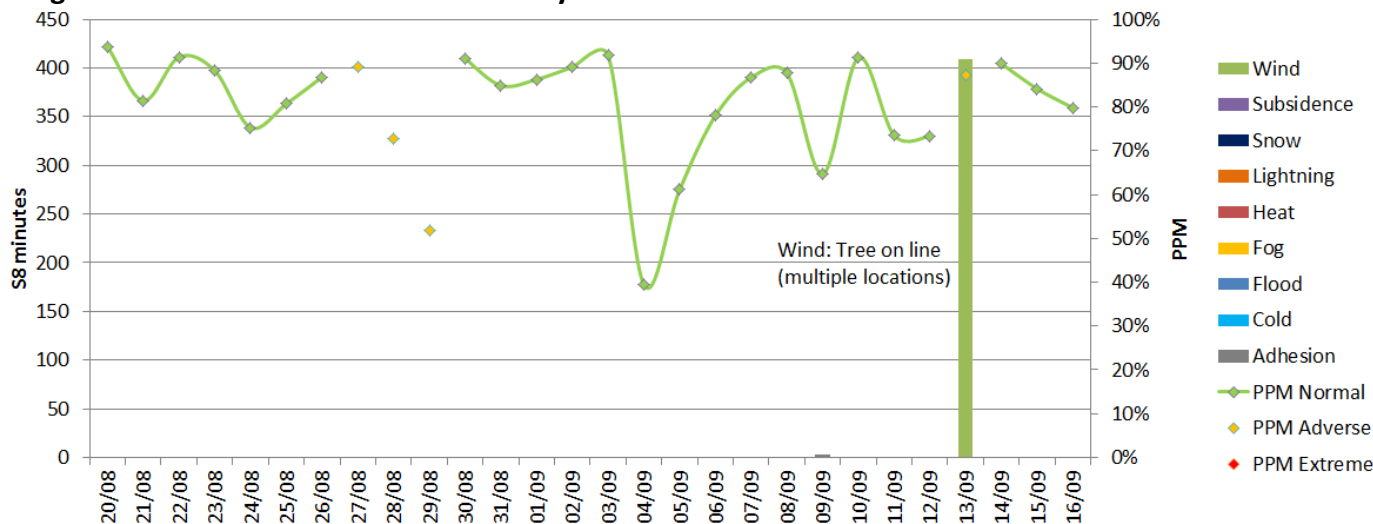
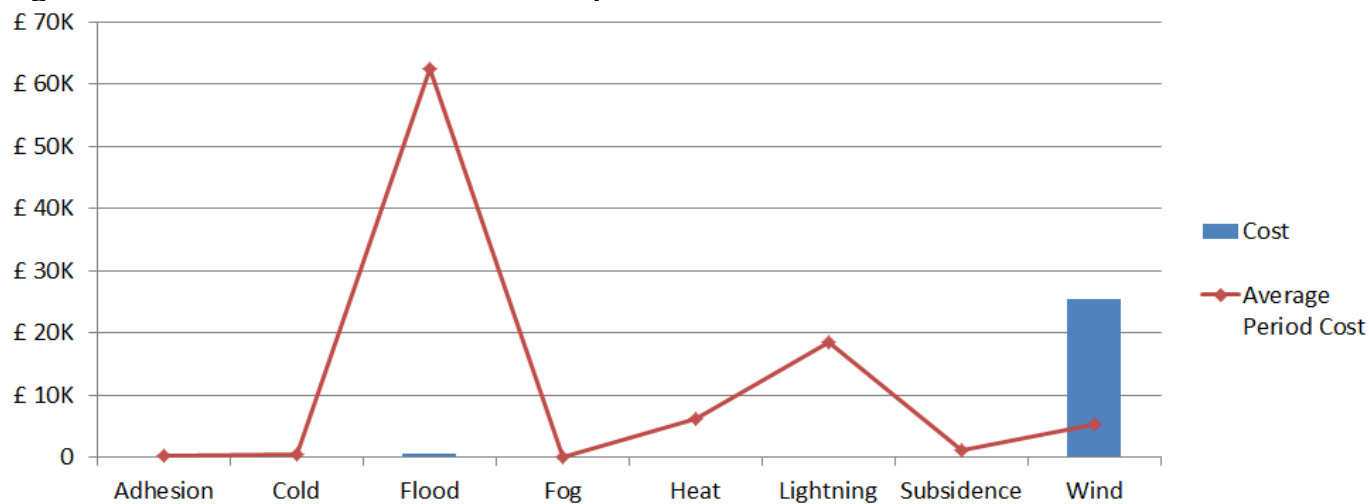


Figure 2 Weather related Schedule 8 cost impact for P6 Wessex



Note that this figure relates to Schedule 8 cost and does not include OPEX or other costs.

Table 1 Top 10 weather related incidents P6

Date	IncidentDescription	stanoxSection	Weather Category	Minutes	Cost
13/09/2017	SNS TREE ON LINE UL	Staines	Wind	109	£9,308.45
13/09/2017	HLM TREE ON THE LINE	Dorking : Horsham	Wind	132	£7,230.23
13/09/2017	WSX SEVERE WEATHER 13/09/17	Southampton Central	Wind	102.5	£5,200.18
13/09/2017	ISL TREE ON LINE UL	Hounslow : Brentford	Wind	54	£2,736.06
16/09/2017	SNS-WNR FLOODING	Windsor & Eton Riverside : Staines	Flood	9	£619.74
13/09/2017	GRT TREE ON LINE UP	Andover : Salisbury	Wind	6	£334.20
13/09/2017	ACT-AHV TREE ON LINE DL	Ash Vale : Ascot	Wind	3	£285.27
13/09/2017	WCP-SNL OBJECTS ON LINE	Motspur Park : Epsom	Wind	3	£258.48
09/09/2017	1O76 PRHC WKM-ASH	Wokingham : Ash	Adhesion	1.5	£62.12
09/09/2017	2O42 PRHC WKM-ASH	Wokingham : Ash	Adhesion	1.5	£62.12



Weather Resilience and Climate Change Adaptation

Wessex Route Periodic Performance Report – 2017/2018 P7

Figure 1 provides an overview of the impact of different weather related events by day for period 7 in relation to delay minutes and PPM performance for Wessex route. If adverse/extreme conditions were experienced by one or more TOC during a week, a yellow or red dot will indicate the performance of the TOC(s) in question. Weather events don't always cause drops in performance (e.g. extreme rainfall may not flood the railway) and therefore, performance on adverse/extreme days can be higher than expected.

Figure 1 Weather related PPM and delay minutes for P7 2017 Wessex

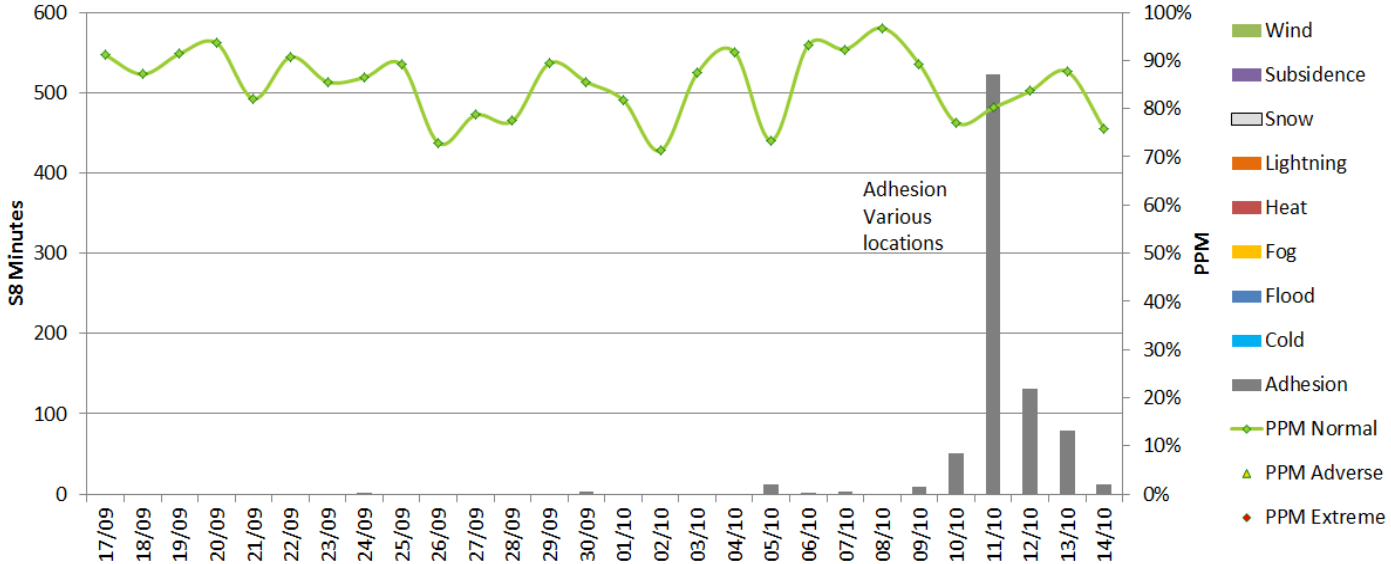
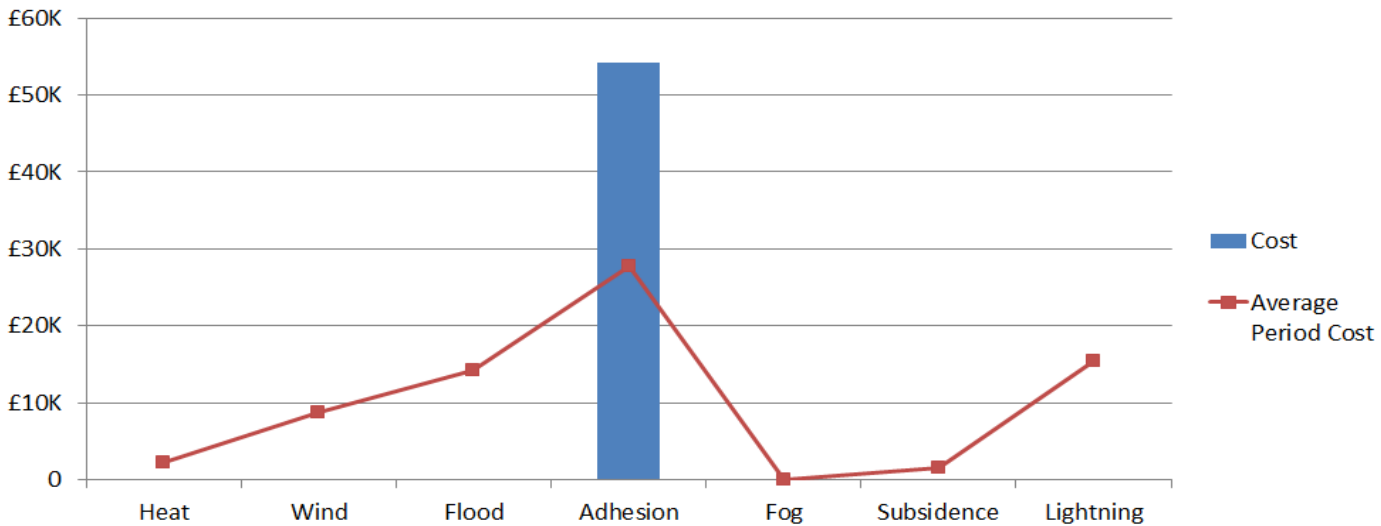


Figure 2 Weather related Schedule 8 cost impact for P7



Note that this figure relates to Schedule 8 cost and does not include OPEX or other costs.

Table 1 Top 10 weather related incidents P7

Date	IncidentDescription	stanoxSection	WeatherCategory	Delay	Cost
11/10/2017	2C10 ROLA NO EXAM RDZ-WKM	Reading Spur Jn : Wokingham	Adhesion	112	£7,696.27
12/10/2017	2D56 LOST 6 TT GLD-MOT	Guildford : Effingham Junction	Adhesion	58	£4,820.58
11/10/2017	WYB-WOK LFNZ SWR	Weybridge : Woking	Adhesion	40.5	£3,230.50
11/10/2017	CLG-EFF LFNZ SWR	Effingham Junction : Claygate	Adhesion	38.5	£3,045.51
12/10/2017	HSL-FNC LFNZ SWR	Farncombe : Haslemere	Adhesion	37	£2,936.44
11/10/2017	FEL-TWI LFNZ SWR	Feltham : Twickenham	Adhesion	24	£2,103.50
11/10/2017	EPS-MOT LFNZ SWR	Motspur Park : Epsom	Adhesion	21.5	£1,852.44
10/10/2017	FNB-WOK LFNZ SWR	Woking : Farnborough (Main)	Adhesion	17.5	£1,433.27
11/10/2017	EPS-LHD LFNZ SWR	Epsom : Leatherhead	Adhesion	21	£1,411.12



Weather Resilience and Climate Change Adaptation

Wessex Route Periodic Performance Report – 2017/2018 P8

Figure 1 provides an overview of the impact of different weather related events by day for period 8 in relation to delay minutes and PPM performance for Wessex route. If adverse/extreme conditions were experienced by one or more TOC during a week, a yellow or red dot will indicate the performance of the TOC(s) in question. Weather events don't always cause drops in performance (e.g. extreme rainfall may not flood the railway) and therefore, performance on adverse/extreme days can be higher than expected.

Figure 1 Weather related PPM and delay minutes for P8 2017 Wessex

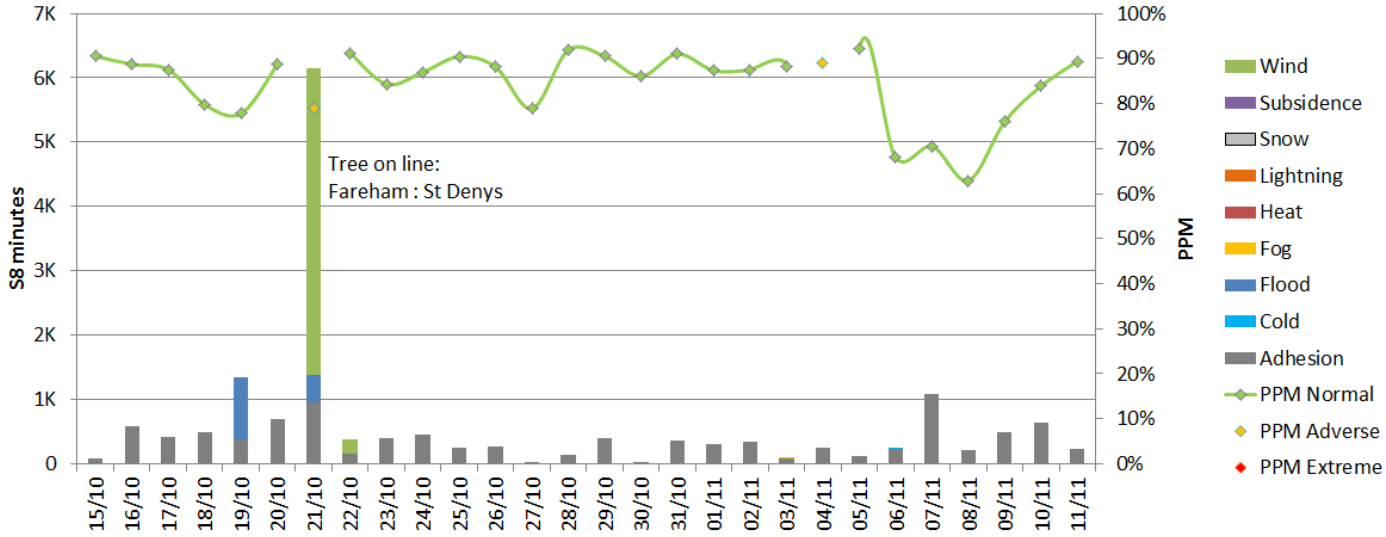
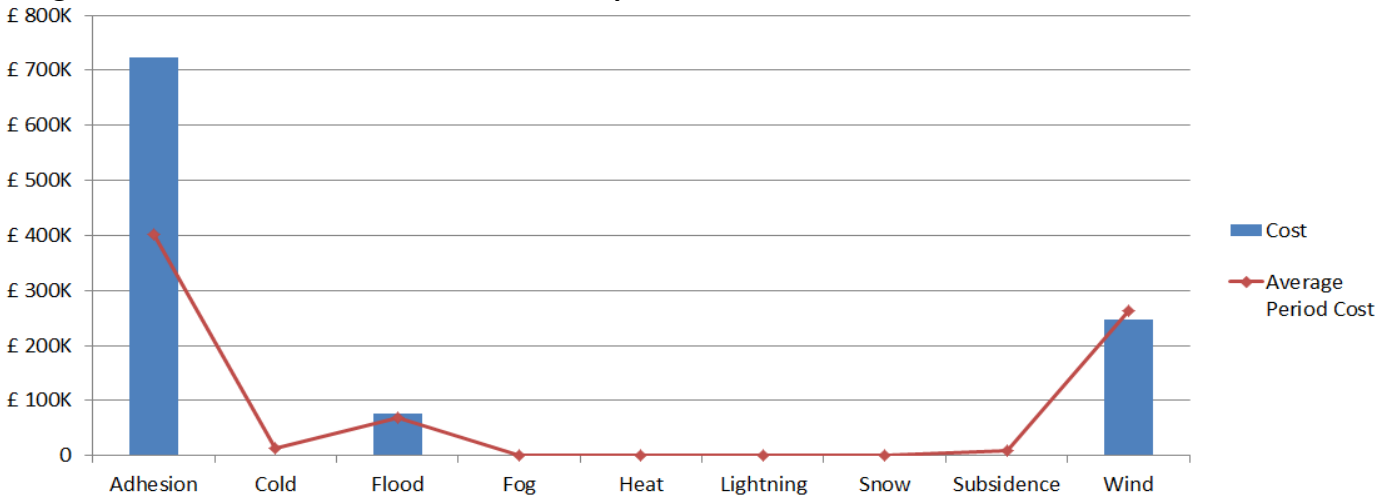


Figure 2 Weather related Schedule 8 cost impact for P8 Wessex



Note that this figure relates to Schedule 8 cost and does not include OPEX or other costs.

Table 1 Top 10 weather related incidents P8

Date	IncidentDescription	stanoxSection	Weather Category	Minutes	Cost
21/10/2017	SNW TREE ON LINE BOTH	Fareham : St Denys	Wind	3011	£135,327.21
21/10/2017	SNW TREE ON LINE BOTH	Fareham : St Denys	Wind	1121	£51,317.24
19/10/2017	CHRDJSB FLOODING	Chard Jn. S.B	Flood	974.5	£50,151.89
21/10/2017	BCU-WEY WSX 50 ESR	Brockenhurst	Wind	593	£44,291.67
21/10/2017	POO-WRM SEVERE FLOODING	Poole : Wareham	Flood	418	£25,852.02
21/10/2017	1W71 DRV OVERSHOT WIN	Winchester	Adhesion	308	£23,201.07
07/11/2017	2H12 LOST TT MINS SHP-SUU	Shepperton : Sunbury	Adhesion	233	£18,466.84
29/10/2017	2P20 LFC WK123 CAT A SPAD PTR	Petersfield	Adhesion	218.5	£18,329.75
16/10/2017	1L44 ROLA WRTINGJ-BSK	Basingstoke : Worting Jn	Adhesion	273	£17,591.36
21/10/2017	2R66 LFC DEN SPAD	Salisbury	Adhesion	223.5	£15,635.03



Weather Resilience and Climate Change Adaptation

Wessex Route Periodic Performance Report – 2017/2018 P9

Figure 1 provides an overview of the impact of different weather related events by day for period 9 in relation to delay minutes and PPM performance for Wessex route. If adverse/extreme conditions were experienced by one or more TOC during a week, a yellow or red dot will indicate the performance of the TOC(s) in question. Weather events don't always cause drops in performance (e.g. extreme rainfall may not flood the railway) and therefore, performance on adverse/extreme days can be higher than expected.

Figure 1 Weather related PPM and delay minutes for P9 2017 Wessex

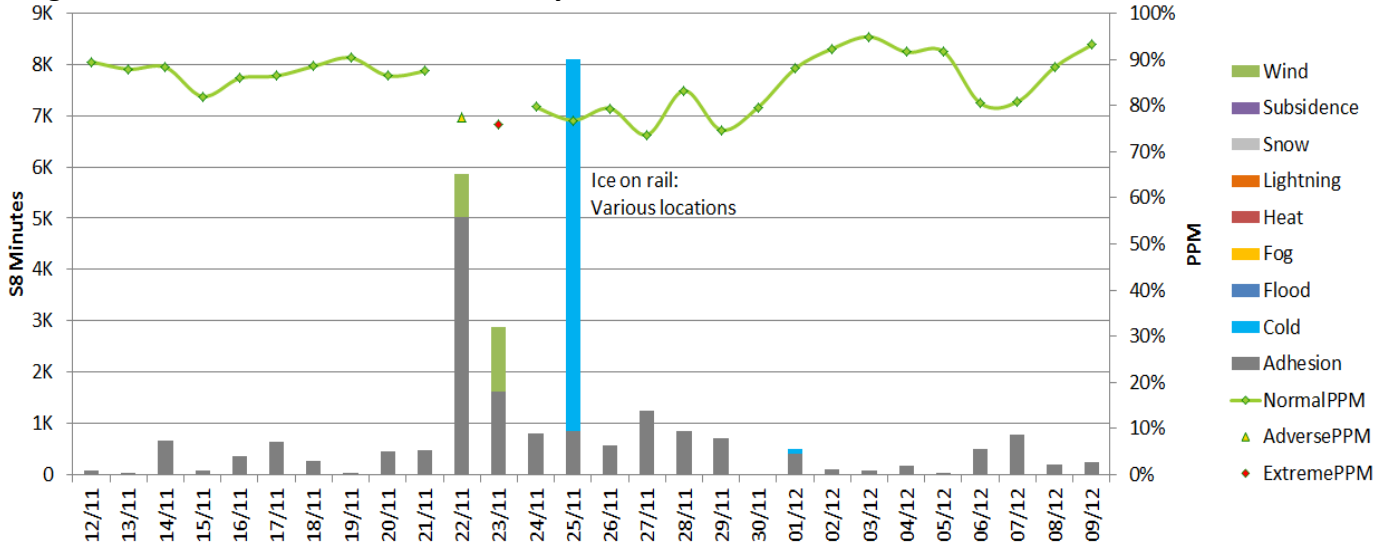
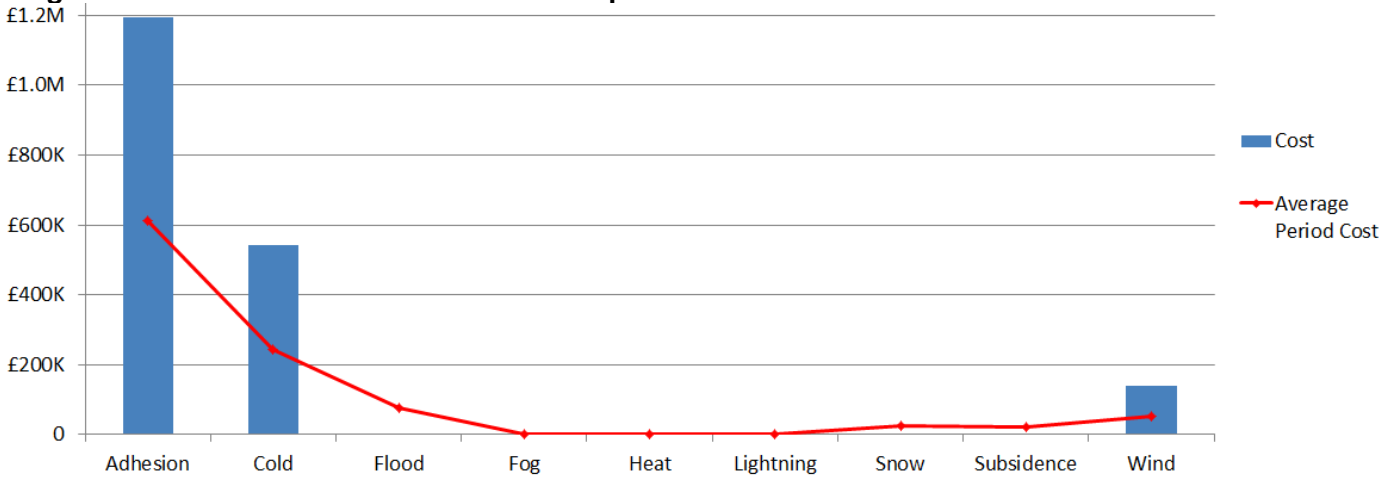


Figure 2 Weather related Schedule 8 cost impact for P9 Wessex



Note that this figure relates to Schedule 8 cost and does not include OPEX or other costs.

Table 1 Top 10 weather related incidents P9 Wessex

Date	IncidentDescription	stanoxSection	Route	Weather Category	Delay Minutes	Cost
22/11/2017	HON-CHRDJSB BLD TC FLR LFC	Honiton : Chard Jn. S.B	WESSEX	Adhesion	2997	£170,227.83
25/11/2017	ICE ON CONRAIL BSK	Basingstoke	WESSEX	Cold	2321.5	£163,139.74
25/11/2017	WAT ICE ON CONRAIL	London Waterloo	WESSEX	Cold	2074.5	£148,561.36
25/11/2017	ICE ON CON RAIL GLD	Guildford	WESSEX	Cold	1538	£126,575.04
25/11/2017	ICE ON CON RAIL WOK	Woking	WESSEX	Cold	1325	£96,553.35
23/11/2017	AHV TREE ON LINE	Ash Vale	WESSEX	Wind	1210	£83,793.17
22/11/2017	ESL-WEY BLANKET SPEED 22/11/17	Eastleigh : St Denys	WESSEX	Wind	624	£40,666.13
25/11/2017	WESSEX BLOCK WORKING	Wokingham	WESSEX	Adhesion	502	£33,742.05
23/11/2017	1B14 ROLA NO EXAM BKO	Woking : Farnborough (Main)	WESSEX	Adhesion	352	£28,333.68
22/11/2017	OVR BDG-3 TC FLR LFC	Worting Jn : Andover	WESSEX	Adhesion	423	£26,530.04



Weather Resilience and Climate Change Adaptation

Wessex Route Periodic Performance Report – 2017/2018 P10

Figure 1 provides an overview of the impact of different weather related events by day for period 10 in relation to delay minutes and PPM performance for Wessex route. If adverse/extreme conditions were experienced by one or more TOC during a week, a yellow or red dot will indicate the performance of the TOC(s) in question. Weather events don't always cause drops in performance (e.g. extreme rainfall may not flood the railway) and therefore, performance on adverse/extreme days can be higher than expected.

Figure 1 Weather related PPM and delay minutes for P10 2017/2018

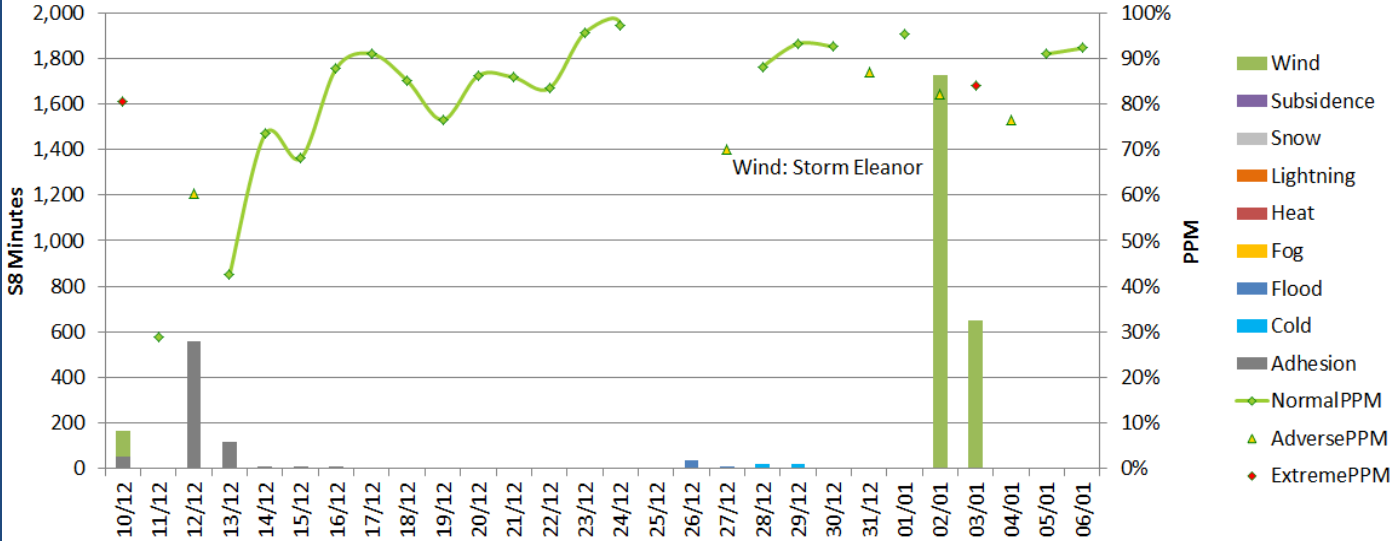
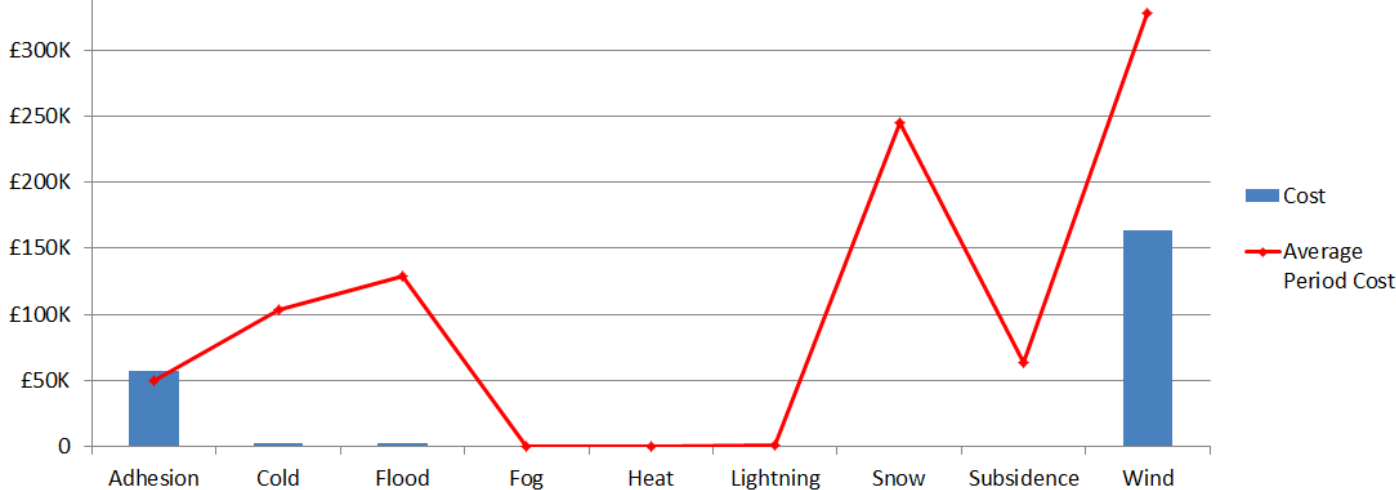


Figure 2 Weather related Schedule 8 cost impact for P10 Wessex



Note that this figure relates to Schedule 8 cost and does not include OPEX or other costs.

Table 1 Top 10 weather related incidents P10

Date	IncidentDescription	stanoxSection	Route	Weather Category	Delay Minutes	Cost
02/01/2018	WSX INNER BLKT SPEED 02/01/18	London Waterloo	WESSEX	Wind	599	£45,454.80
03/01/2018	ROM-SAL OVERHANGING TREE	Romsey	WESSEX	Wind	308	£21,272.93
12/12/2017	EPS-MOT LFNZ SWR 12/12/17	Motspur Park : Epsom	WESSEX	Adhesion	216.5	£17,985.55
02/01/2018	WSX PMH BLKT SPEED 02/01/18	Portsmouth Harbour	WESSEX	Wind	200	£14,851.03
02/01/2018	WSX BSK BLKT SPEED 02/01/18	Basingstoke	WESSEX	Wind	179	£12,537.81
02/01/2018	WSX ESL BLKT SPEED 02/01/18	Eastleigh	WESSEX	Wind	136	£10,875.57
02/01/2018	WSX DORSET BLKT SPEED 02/01/18	Bournemouth	WESSEX	Wind	95	£7,861.50
02/01/2018	WSX WOE BLANKET SPEED 02/01/18	Honiton	WESSEX	Wind	150	£7,623.77
03/01/2018	EXMOTHJ LC FLR	Pinhoe : Honiton	WESSEX	Wind	124	£7,399.44
02/01/2018	SDN-FRM TREE STRUCK	Fareham : St Denys	WESSEX	Wind	247	£5,605.53



Weather Resilience and Climate Change Adaptation

Wessex Route Periodic Performance Report – 2017/2018 P11

Figure 1 provides an overview of the impact of different weather related events by day for period 11 in relation to delay minutes and PPM performance for Wessex route. If adverse/extreme conditions were experienced by one or more TOC during a week, a yellow or red dot will indicate the performance of the TOC(s) in question. Weather events don't always cause drops in performance (e.g. extreme rainfall may not flood the railway) and therefore, performance on adverse/extreme days can be higher than expected.

Figure 1 Weather related PPM and delay minutes for P11 2018

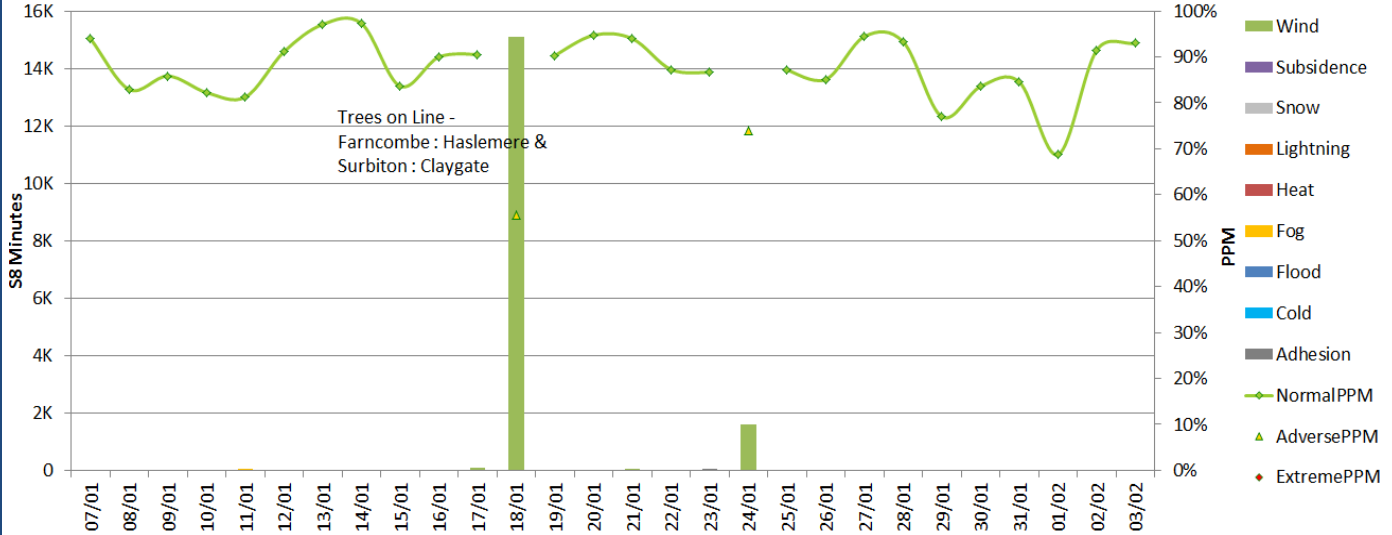
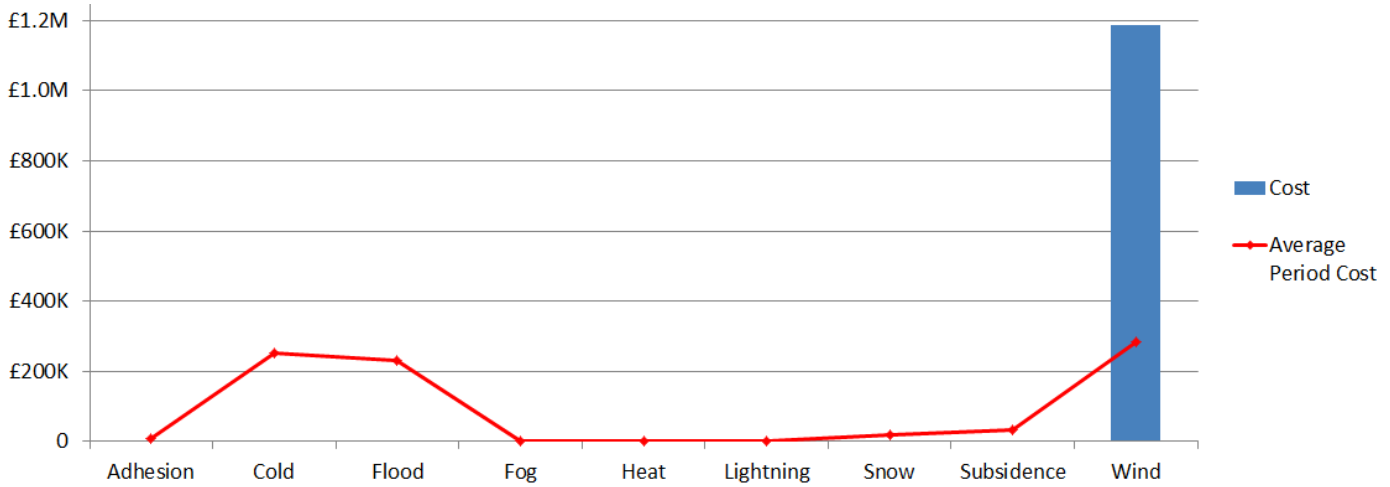


Figure 2 Weather related Schedule 8 cost impact for P11 Wessex



Note that this figure relates to Schedule 8 cost and does not include OPEX or other costs.

Table 1 Top 10 weather related incidents P11

Date	IncidentDescription	stanoxSection	Route	Weather Category	Delay Minutes	Cost
18/01/2018	FNC-HSL TREE DOWN	Farncombe : Haslemere	WESSEX	Wind	6590.5	£511,585.02
18/01/2018	HYW TREE ON LINE	Surbiton : Claygate	WESSEX	Wind	2727	£215,989.35
18/01/2018	5E79 TREE ON LINE ESL-SHW UL	Eastleigh	WESSEX	Wind	3231	£200,252.12
18/01/2018	SDN-FRM TREES ON LINE	Fareham : St Denys	WESSEX	Wind	1181	£78,402.54
24/01/2018	SNW TREE ON LINE DL	Fareham : St Denys	WESSEX	Wind	705.5	£46,371.54
18/01/2018	PTR TREE ON LINE BOTH	Haslemere	WESSEX	Wind	595	£41,001.94
24/01/2018	SDN-FRM MULTI TREES LINE UN/DN	Fareham : St Denys	WESSEX	Wind	888	£33,949.13
18/01/2018	BTY TREE ON LINE	Farnham	WESSEX	Wind	367.5	£25,476.83
18/01/2018	WKM TREE ON LINE	Wokingham : Ash	WESSEX	Wind	204	£8,843.18
18/01/2018	WYB OBJECT ON LINE UMS	Weybridge	WESSEX	Wind	95.5	£8,028.66



Weather Resilience and Climate Change Adaptation

Wessex Route Periodic Performance Report – 2017/2018 P12

Figure 1 provides an overview of the impact of different weather related events by day for period 12 in relation to delay minutes and PPM performance for Wessex route. If adverse/extreme conditions were experienced by one or more TOC during a week, a yellow or red dot will indicate the performance of the TOC(s) in question. Weather events don't always cause drops in performance (e.g. extreme rainfall may not flood the railway) and therefore, performance on adverse/extreme days can be higher than expected.

Figure 1 Weather related PPM and delay minutes for P12 2018

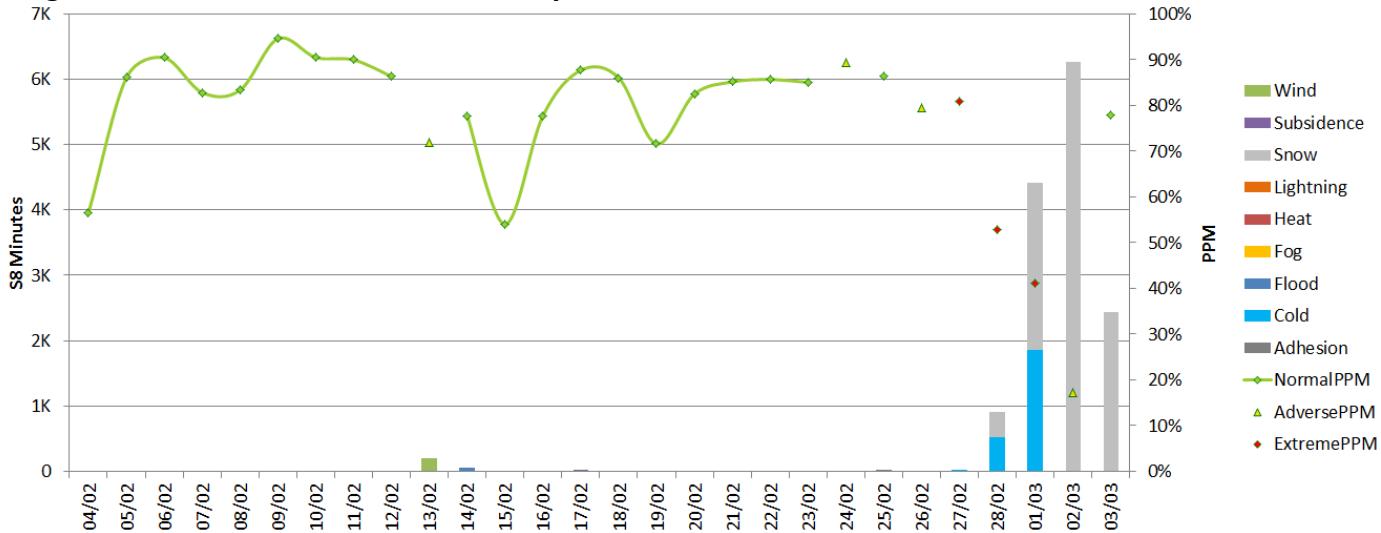
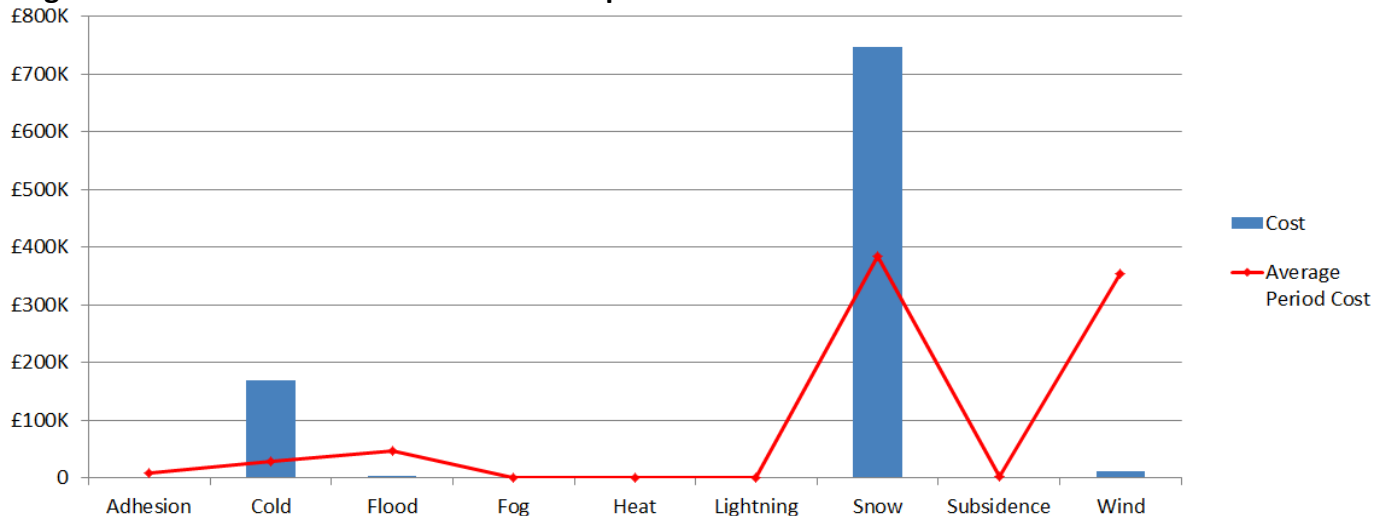


Figure 2 Weather related Schedule 8 cost impact for P12 Wessex



Note that this figure relates to Schedule 8 cost and does not include OPEX or other costs.

Table 1 Top 10 weather related incidents P12

Date	IncidentDescription	stanoxSection	Route	Weather Category	Delay Minutes	Cost
02/03/2018	SEV SNOW/ICE HSL-PMH 02/03/18	Haslemere : Petersfield	WESSEX	Snow	2864	£148,829.23
02/03/2018	SEV SNOW/ICE ESL ASC 02/03/18	Eastleigh	WESSEX	Snow	1943	£140,226.20
01/03/2018	SEV SNOW SAL-EXD	Gillingham (Dorset) : Salisbury	WESSEX	Snow	1240	£69,068.00
01/03/2018	ICE BCU-BMH DM	Brockenhurst : Bournemouth	WESSEX	Cold	787	£66,254.71
01/03/2018	MULTI PTS HEATER FLR SOU	Southampton Central	WESSEX	Cold	1041.5	£63,354.52
03/03/2018	SEV SNOW/ICE BSK AREA 03/03/18	Basingstoke	WESSEX	Snow	561	£40,734.93
01/03/2018	AHT WK2320B SNOW/ICE	Aldershot	WESSEX	Snow	494	£36,423.68
03/03/2018	SEV SNOW/ICE HSL-PMH 03/03/18	Haslemere : Petersfield	WESSEX	Snow	426	£35,809.71
03/03/2018	SEV SNOW/ICE GLD 03/03/18	Guildford	WESSEX	Snow	397.5	£35,457.24
02/03/2018	SEV SNOW/ICE BSK AREA 02/03/18	Basingstoke	WESSEX	Snow	445	£33,085.40



Weather Resilience and Climate Change Adaptation

Wessex Route Periodic Performance Report – 2017/2018 P13

Figure 1 provides an overview of the impact of different weather related events by day for period 13 in relation to delay minutes and PPM performance for Wessex route. If adverse/extreme conditions were experienced by one or more TOC during a week, a yellow or red dot will indicate the performance of the TOC(s) in question. Weather events don't always cause drops in performance (e.g. extreme rainfall may not flood the railway) and therefore, performance on adverse/extreme days can be higher than expected.

Figure 1 Weather related PPM and delay minutes for P13 2018 Wessex

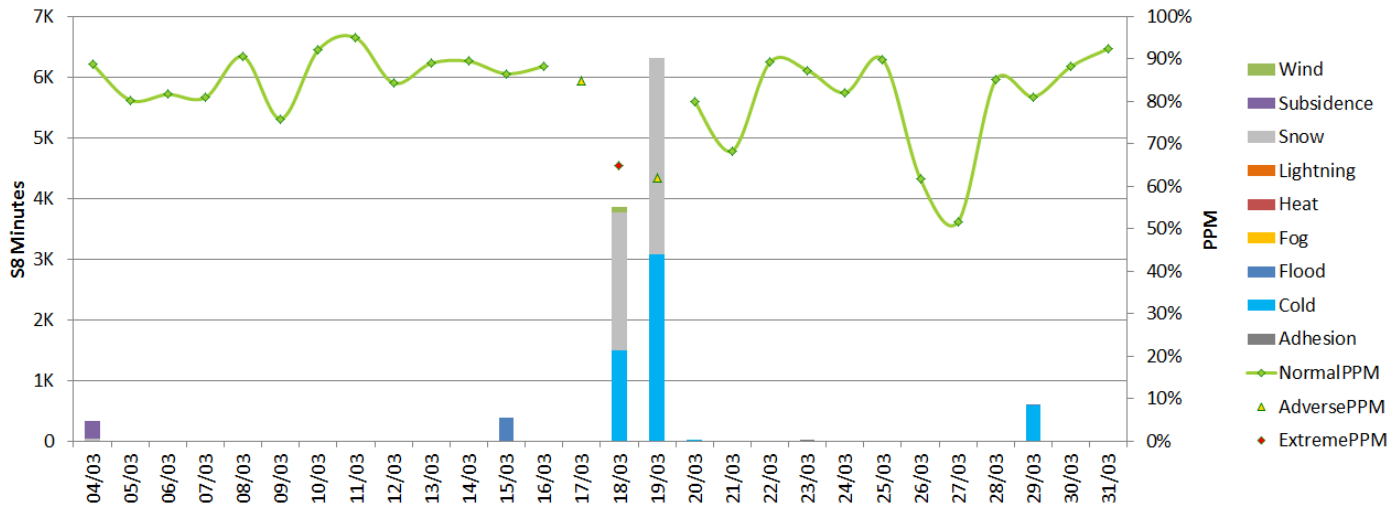
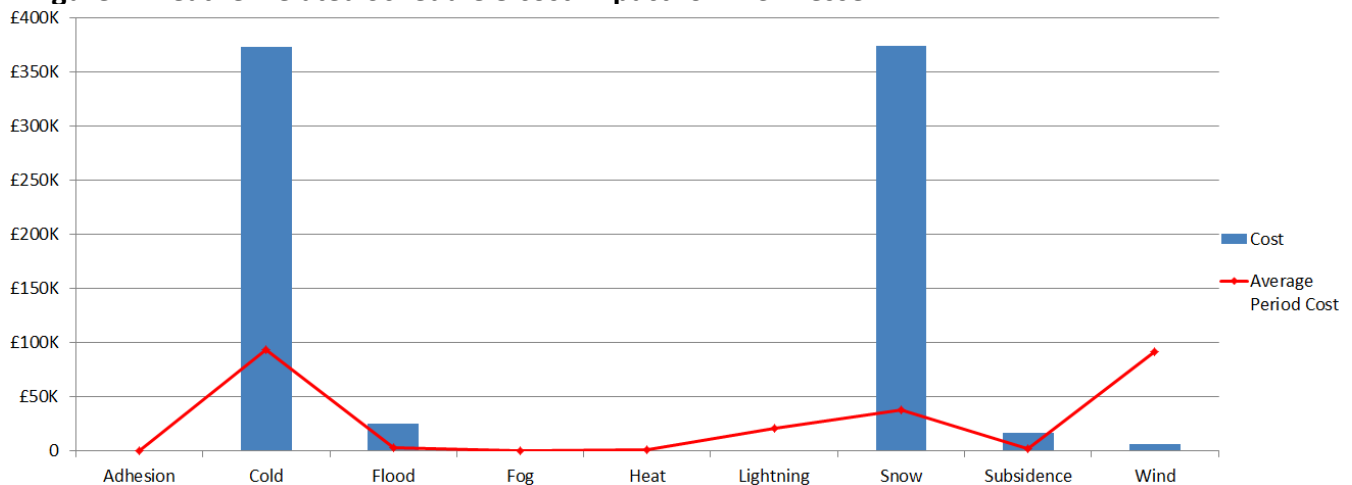


Figure 2 Weather related Schedule 8 cost impact for P13 Wessex



Note that this figure relates to Schedule 8 cost and does not include OPEX or other costs.

Table 1 Top 10 weather related incidents P13

Date	IncidentDescription	stanoxSection	Route	Weather Category	Delay Minutes	Cost
19/03/2018	WESSEX SEVERE COLD KRS	London Waterloo	WESSEX	Snow	1124	£77,564.62
19/03/2018	2W05 CAPE ICING BASING BM	Basingstoke Bartn MI C.S.D	WESSEX	Cold	898.5	£59,865.72
18/03/2018	BCE ICE ON CONRAIL	Bracknell	WESSEX	Cold	621	£54,997.31
19/03/2018	HSL EW36 PTS FLR/SNOW/ICE	Haslemere	WESSEX	Snow	689	£54,248.64
19/03/2018	HON-CHRDJSB SE2825 PTS/ SNOW	Honiton : Chard Jn. S.B	WESSEX	Snow	827	£47,109.34
18/03/2018	WILTON SY144 SNOW	Gillingham (Dorset) : Salisbury	WESSEX	Snow	817	£46,123.22
29/03/2018	PTR ICING ON CON RAIL	Petersfield	WESSEX	Cold	581	£45,478.07
19/03/2018	XFQ ICE ON CONRAIL	Guildford U.C.H.S.	WESSEX	Cold	583.5	£44,366.40
19/03/2018	1W94 ICING WEY-DCH	Dorchester South : Weymouth	WESSEX	Cold	463.5	£36,642.67
19/03/2018	FRM ICE ON CONRAIL	Fareham	WESSEX	Cold	574.5	£28,992.10