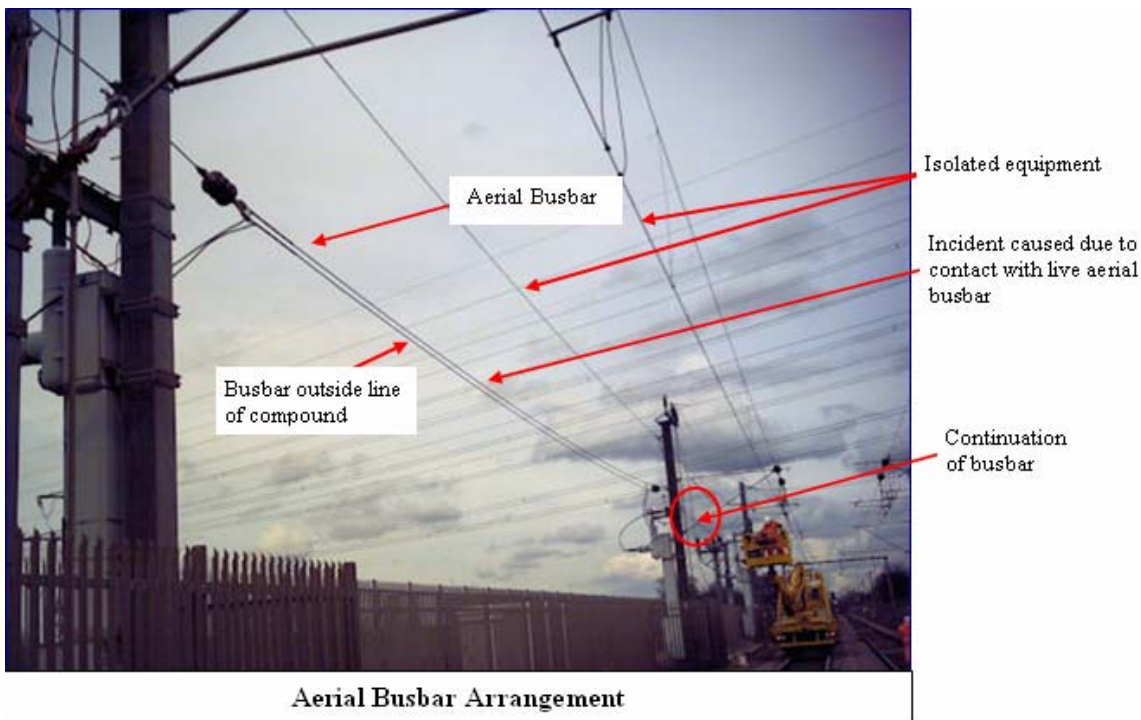


Appendix A – 3350/167

Infrastructure Group Safety Bulletin

Electrical Accident – RRV Operator came into contact with live Overhead Line Equipment (OLE)

On the 30th March 2008 at Springfield Feeder Station, Great Eastern Line in the South East Territory an accident occurred whilst undertaking OLE renewals to Springfield Neutral sections. An Overhead Line Switch Feeder cable came into contact with a live 25kv aerial bus-bar resulting in burn injuries to a RRV operator.



Actions

Project engineers and planning staff are reminded that during the work planning stage, a full assessment of electrical risks shall be undertaken in accordance with Module 2 of RT/E/S/29987, if the work is on or about AC electrical lines.

This assessment should include a site visit in ALL areas to check that the OLE configuration, feeding arrangements, points of isolation and earthing points are fully determined and correct signage is in place. Extra vigilance is required in complex areas noting any standard and non standard equipment; special attention is also required when working within the proximity of OLE components such as bare feeders / switches / sealing ends / aerial bus-bars etc.

The accident has served to highlight the importance of fitting the correct identification/warning signs. Maintenance E&P Engineers are reminded of the requirements of section 9.3 of NR/SP/ELP/21131 which specifies signage required for bare bus-bars at Structure Mounted Outdoor Switchgear (SMOS) locations.