

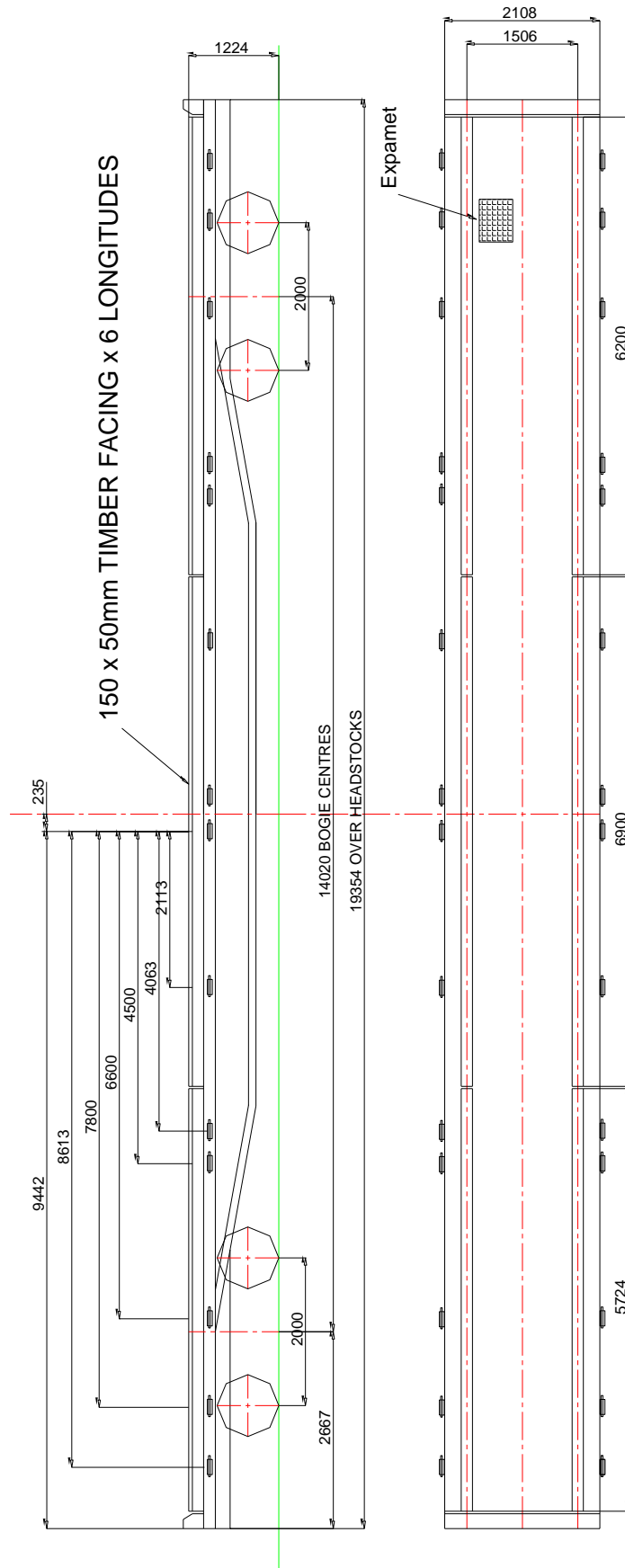
Wagon Type:		Commodity	
FCA Super Tench (Twin)		Materials	
Tare	25.20 t	RA	8
Payload	68 t	Length over buffers	20.8 m
Cubic capacity	N/A	Height	1.66 m
Remarks	Fitted with 3 x 6.1 m (20') load modules, each module is secured by 4 spigots and weighs 1.8 t (Total 5.4t). Loading length 18.3m Width 1.92m Door Height 580mm		



Wagon Type:		Commodity	
FDA Twin		Track Panels Sleepers	
Tare	22 t	RA	5
Payload	52 t	Length over buffers	20.44 m
Cubic capacity	N/A	Height	1.224 m
Remarks			



FDA Sleeper Carrier



Wagon Type:		Commodity	
FEA Salmon (GBRf)		Track Panels Concrete/Timber Sleepers	
Tare	21.05 t	RA	7
Payload	60.9 t	Length over buffers	20.8 m
Cubic capacity	N/A	Height	1.66 m
Remarks	Fitted with 3 x 6.1 m (20') load modules, each module is secured by 4 twistlocks and weighs 1.7 t (Total 5.1 t) Do not use hand ratchet tensioner securing straps.		



Wagon Type:		Commodity	
FJA/YQA Super Tench		Materials	
Tare	20.1 t	RA	5
Payload	47.4 t	Length over buffers	20.8 m
Cubic capacity	N/A	Height	1.66 m
Remarks	Fitted with 3 x 6.1 m (20') load modules, each module is secured by 4 twistlocks and weighs 1.5 t.		



Wagon Type:		Commodity	
FZA Super Salmon + Runner Wagon		Long S&C Ironwork	
Tare	27.4 t	RA	7
Payload	51 t	Length over buffers	22.240 m
Cubic capacity	N/A	Height	1.752 m
Remarks	Loading bed is 24.3 m long Fitted with 6 x movable bolsters.		



Wagon Type:		Commodity	
HQA/JJA Auto Ballaster		New Ballast	
Tare	25.7 t	RA	8
Payload	64 t	Length over buffers	16.57 m
Cubic capacity		Height	
Remarks	Fitted with 12 remotely operated discharge doors. Wagons are in sets of 5.		



Wagon Type:		Commodity	
IFA (Switch & Crossing Panel Vehicle)		Modular S&C	
Tare	40 – 41.5 t	RA	4
Payload	26.5 t	Loading Length	26.5 m
Cubic capacity	N/A	Loading Width	3.7 m
Remarks	Loaded with a single modular S&C panels up to 3.7m wide and 26.5m in length.		



Wagon Type:		Commodity	
KFA (fitted with GBRf container flats)		Sleepers & Track Panels	
Tare	20.2 t	RA	7
Payload	56.79 t (61.8 t - 5.01 t)	Length over buffers Loading length Bogie Centre	21.335 m 18.288 m 14.0 m
Cubic capacity	N/A	Deck Height	1260 mm (including containers). (1000 mm without containers)
Remarks	Wagon is loaded with 3 x 20' flat ISO containers secured by 4 x twistlocks. Each container has tare weight of 1.67 t and carrying capacity of 17 t. Containers are 6096mm (L) x 2150mm (W) x 260 mm (H)		



Wagon Type:		Commodity	
KRA/FEA* (*Balfour Beatty) NTC Sleeper Carrier wagons		Concrete Sleepers Steel Sleepers	
Tare	KRA 26.5 t FEA 20.44 t	RA	6 7
Payload	KRA 52.5 t FEA 61.5 t	Length over buffers	19.5 m
Cubic capacity	N/A	Deck Height	
Remarks	Wagons work in conjunction with the NTC Train FEA wagon is loaded with 3 x 20' load modules which each weigh 3.3 t (Total 9.9 t)		

Balfour Beatty FEA





Network Rail KRA

Wagon Type:		Commodity	
KWA Fastrol		Plant Machinery	
Tare	23.95 t - 25.2 t	RA	1
Payload	14 t (in well)	Length over buffers	17.06 m
Cubic capacity	N/A	Deck Height	677 mm
Remarks	Wagon is loaded with 2 sections of platform staging secured by twistlocks for loading plant.		

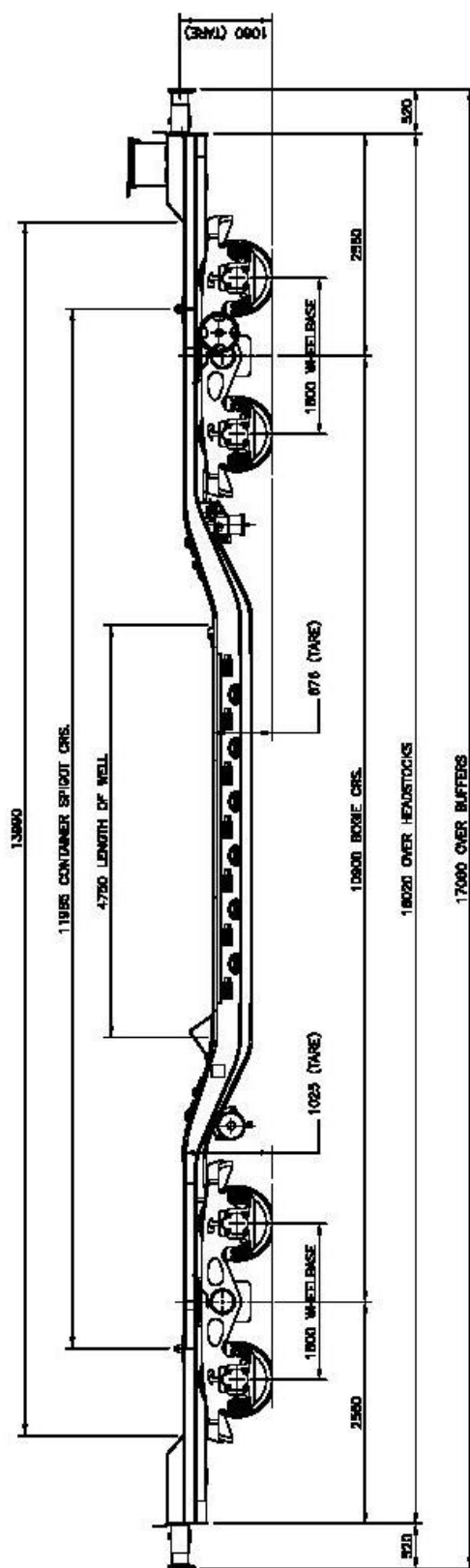




Produced in accordance with NR/L3/SCO/308		
Issue: 2	Date: July 2019	Wagon Details

Page 12 of 34

KWA Fastrol Wagon



Wagon Type:		Commodity	
MHA/MFA/MPA/MTA Coalfish		Bulk materials Spoil, Ballast, Sand, Pea gravel	
Tare	13.9 t	RA	9
Payload	33.1 t	Length over buffers	9.04 m
Cubic capacity	16.7 m	Height	2.76 m
Remarks			



Wagon Type:		Commodity	
MLA Red Snapper		Bulk materials	
Tare	24.1 t	RA	8
Payload	65.9 t	Length over buffers	16.9 m
Cubic capacity	45 m	Height	2.4 m
Remarks			



Wagon Type:		Commodity	
MCA (outer) Swordfish MDA (inner)		Bulk materials	
Tare	28.5 t	RA	10
Payload	73.1	Length over buffers	19.124 m
Cubic capacity	39.2 m	Height	
Remarks			



Wagon Type:		Commodity	
MXA Lobster		Bulk materials	
Tare	25.8 t	RA	7
Payload	54.2 t	Length over buffers	16.890 m
Cubic capacity		Height	2.4 m
Remarks	No side steps for viewing load		



Wagon Type:		Commodity	
MRA Side Tipper		New Ballast	
Tare	32 t	RA	8
Payload	57 t	Length over buffers	16.9 m
Cubic capacity	38.3	Height	
Remarks	Not to be loaded with spoil Wagons are in sets of 5 with 1 wagon fitted with a generator which reduces payload to 55t		



Wagon Type:		Commodity	
JNA Falcon		Bulk materials Scrap sleepers Scrap rail	
Tare	26.5 t	RA	8
Payload	63.5 t	Length over buffers	16.9 m
Cubic capacity	43 m	Height	2.4 m
Remarks			



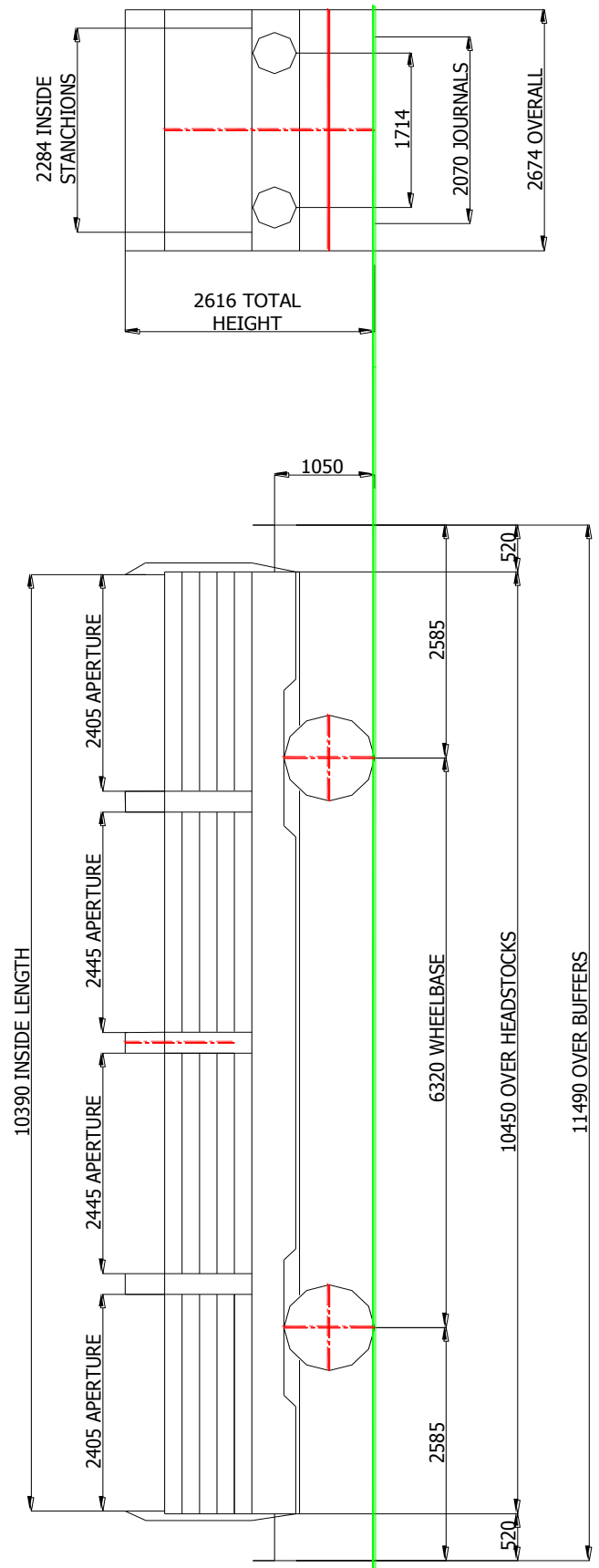
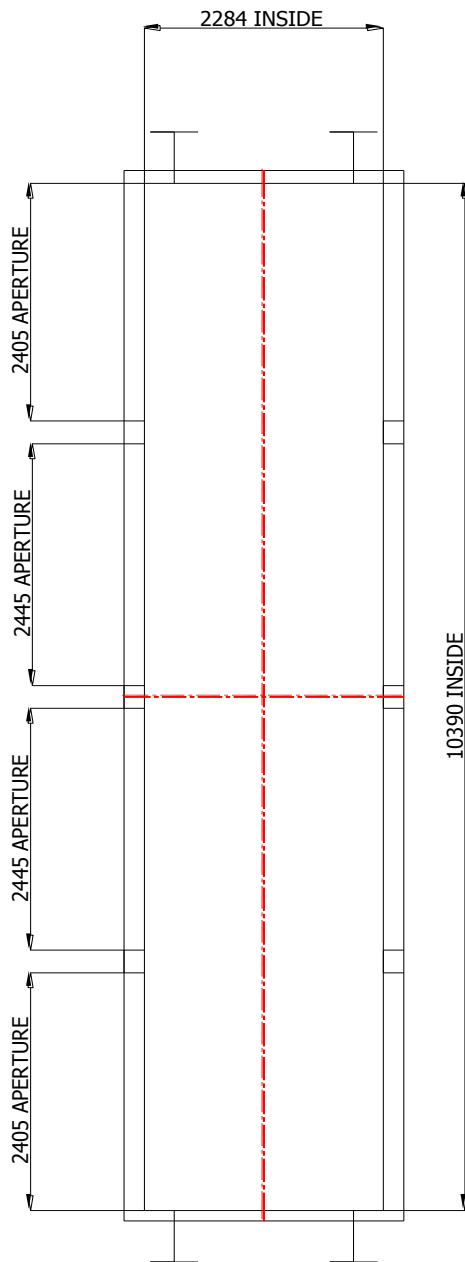
Wagon Type:		Commodity	
OBA Bass (Wood and mesh sided)		Loose materials	
Tare	14.3 t	RA	9
Payload	31.5 t	Length over buffers	11.49 m
Cubic capacity	N/A	Height	2.616 m
Remarks	4 drop side doors per side Steel mesh door type fitted with steel floor, wood door type fitted with wood floor		



Weight distribution

Length of load (metres)	Max weight (tonnes)
7.400 and over	31.00
7.000 – 7.399	28.80
6.320 – 6.999 (axle centres)	25.70
5.000 – 6.319	21.25
4.000 – 4.999	18.80
3.000 – 3.999	16.85
2.000 – 2.999	15.25

OBA WAGONS

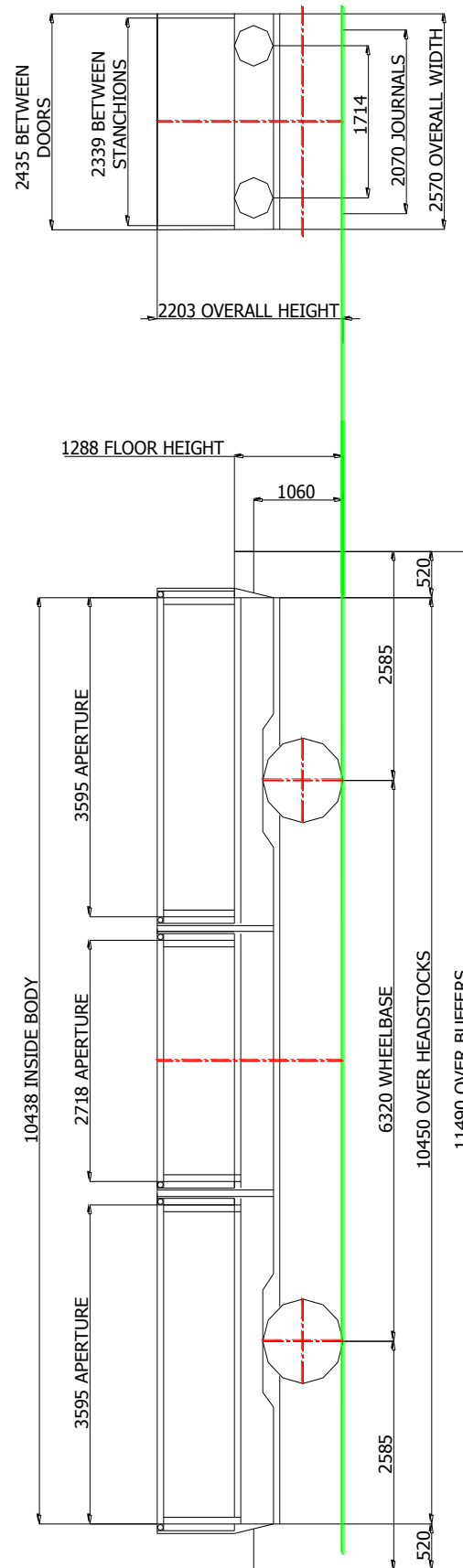
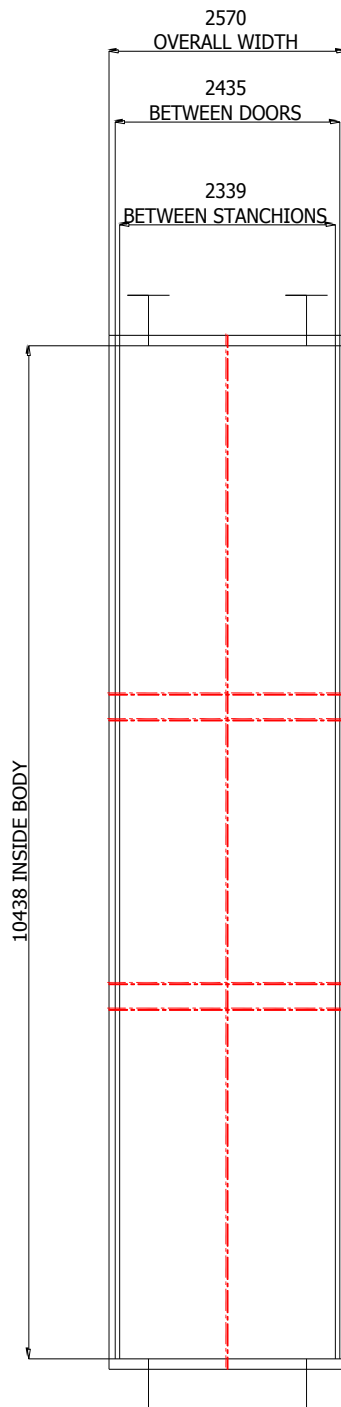


Wagon Type:		Commodity	
OCA Bass (Steel sided)		Loose materials	
Tare	14.3 t	RA	9
Payload	31.5 t	Length over buffers	11.49 m
Cubic capacity	N/A	Height	2.203 m
Remarks	3 spring assisted drop side doors per side Fitted with wood floors		



Weight distribution	
Length Of Load (Metres)	(Tonnes)
7.400 or over	31.50
7.000	29.00
6.320 (over axles)	25.80
5.000	21.35
4.000	18.85
3.000	16.90
2.000	15.30

OCA WAGONS

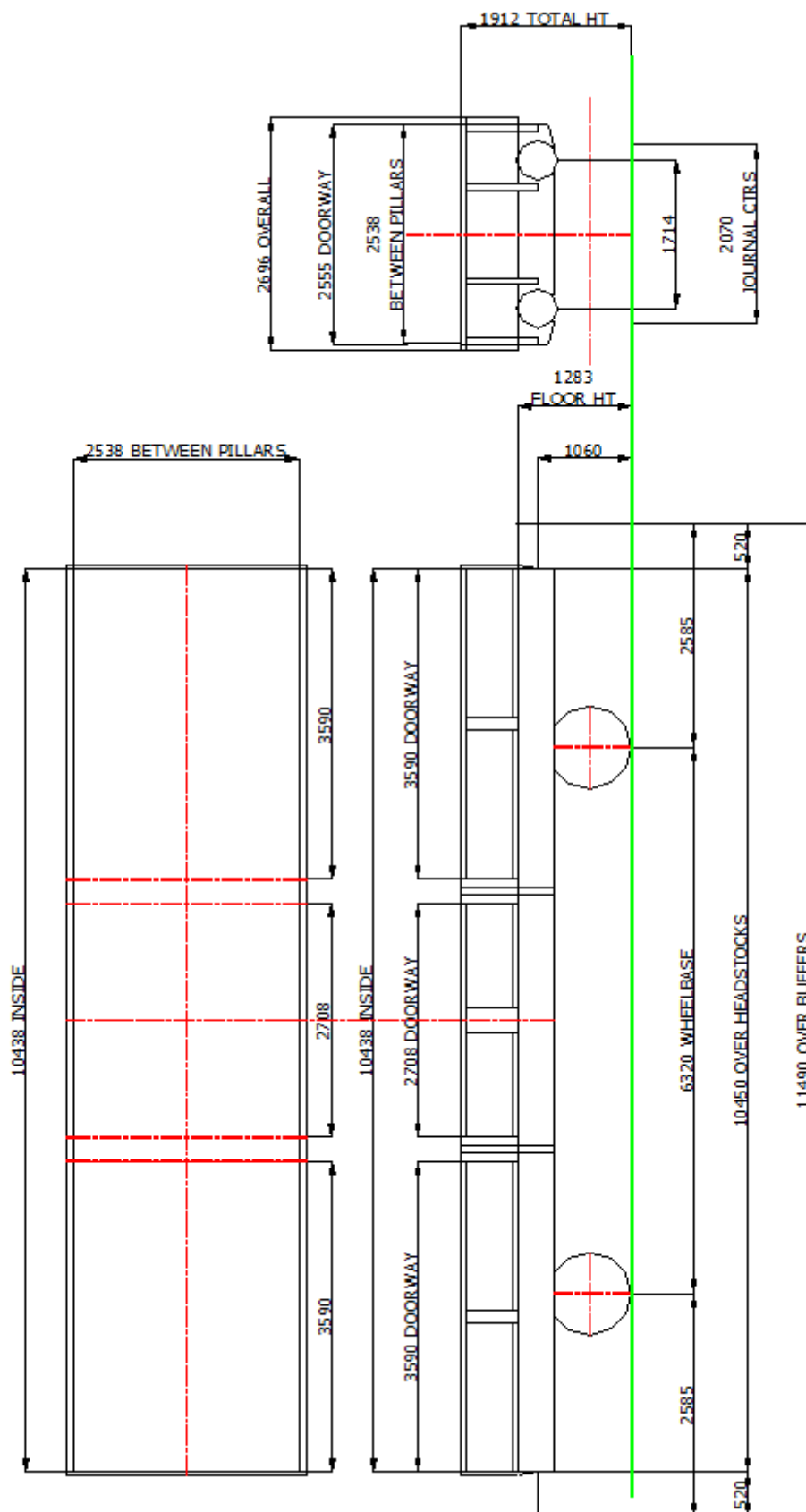


Wagon Type:		Commodity	
SPA Pike		Loose materials	
Tare	15 t	RA	9
Payload	29 - 31.5 t	Length over buffers	11.49 m
Cubic capacity	N/A	Height	1.283 m
Remarks	3 spring assisted drop side doors per side Fitted with 7 securing winches on each side Steel floor fitted with 19 fixed transverse bolsters		



Weight distribution	
Length of load (metres)	Max weight (tonnes)
7.400 or over	31.00
7.000 – 7.399	28.80
6.320 – 6.999	25.70
5.000 – 6.319	21.25
4.000 – 4.999	18.80
3.000 – 3.999	16.85
2.000 – 2.999	15.25

SPA WAGONS



Wagon Type:		Commodity	
YGA Seacow / Sealion		New Ballast	
Tare	21.1 t	RA	4
Payload	40 t	Length over buffers	11.58 m
Cubic capacity	26.6	Height	
Remarks	2 load compartments each with 3 manually operated discharge doors.		



Wagon Type:		Commodity	
YKA Osprey		Track Panels	
Tare	26.3 t	RA	7
Payload	53.4 t	Length over buffers	19.938 m
Cubic capacity	N/A	Deck Height	1.222 m
		Stanchion Height	2.377 m
Remarks			



Wagon Type:		Commodity	
YQA Parr		Sleepers	
Tare	31 t	RA	6
Payload	49 t	Length over buffers	19.81 m
Cubic capacity	N/A	Height	1.675 m
Remarks	Fitted with 2 x 22 m longitudinal ratchet straps.		



Wagon Type:		Commodity	
YWA Salmon (Flatop)		Track Panels Sleepers	
Tare	24.84 t	RA	7
Payload	56 t	Length over buffers	19.938 m
Cubic capacity	N/A	Height	1.222 m
Remarks	Fitted with securing strap equipment box		

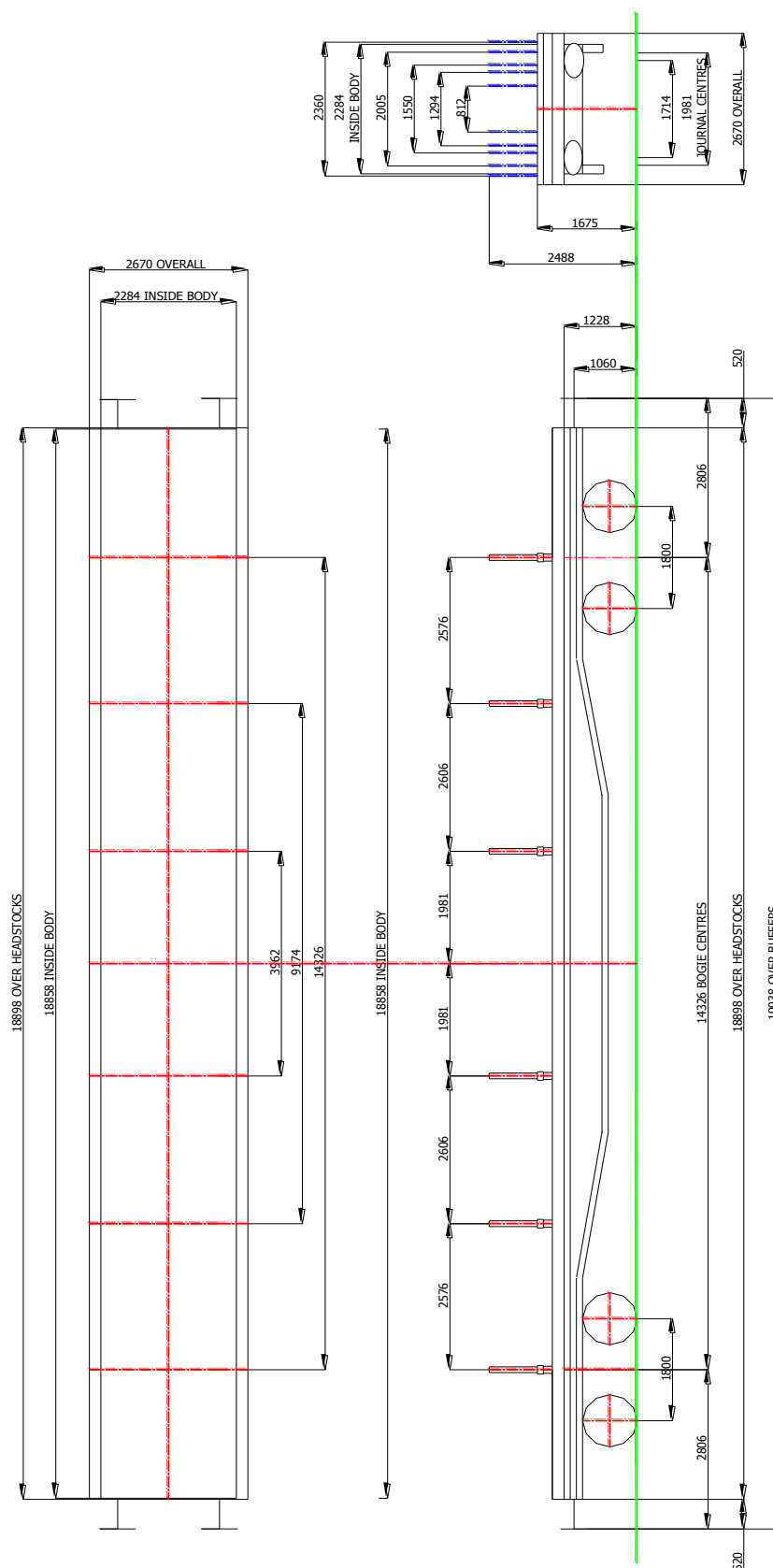


Wagon Type:		Commodity	
YLA Mullet		Rails up to 18.288 m	
Tare	31 t	RA	6
Payload	49 t	Length over buffers	19.81 m
Cubic capacity	N/A	Height	1.675 m
Remarks	Fitted with 6 transverse bolsters each with 11 stanchion positions		



Weight distribution Bolster weights (tonnes)					
1	2	3	4	5	6
8.166	8.166	8.166	8.166	8.166	8.166
12.25	12.25			12.25	12.25
24.50					24.50
	17.857			17.857	
	8.298	8.289	8.298	8.298	
9.00	9.00	9.00	9.00	9.00	
9.80	9.80	9.80	9.80		
		14.473	14.473		

YLA WAGONS

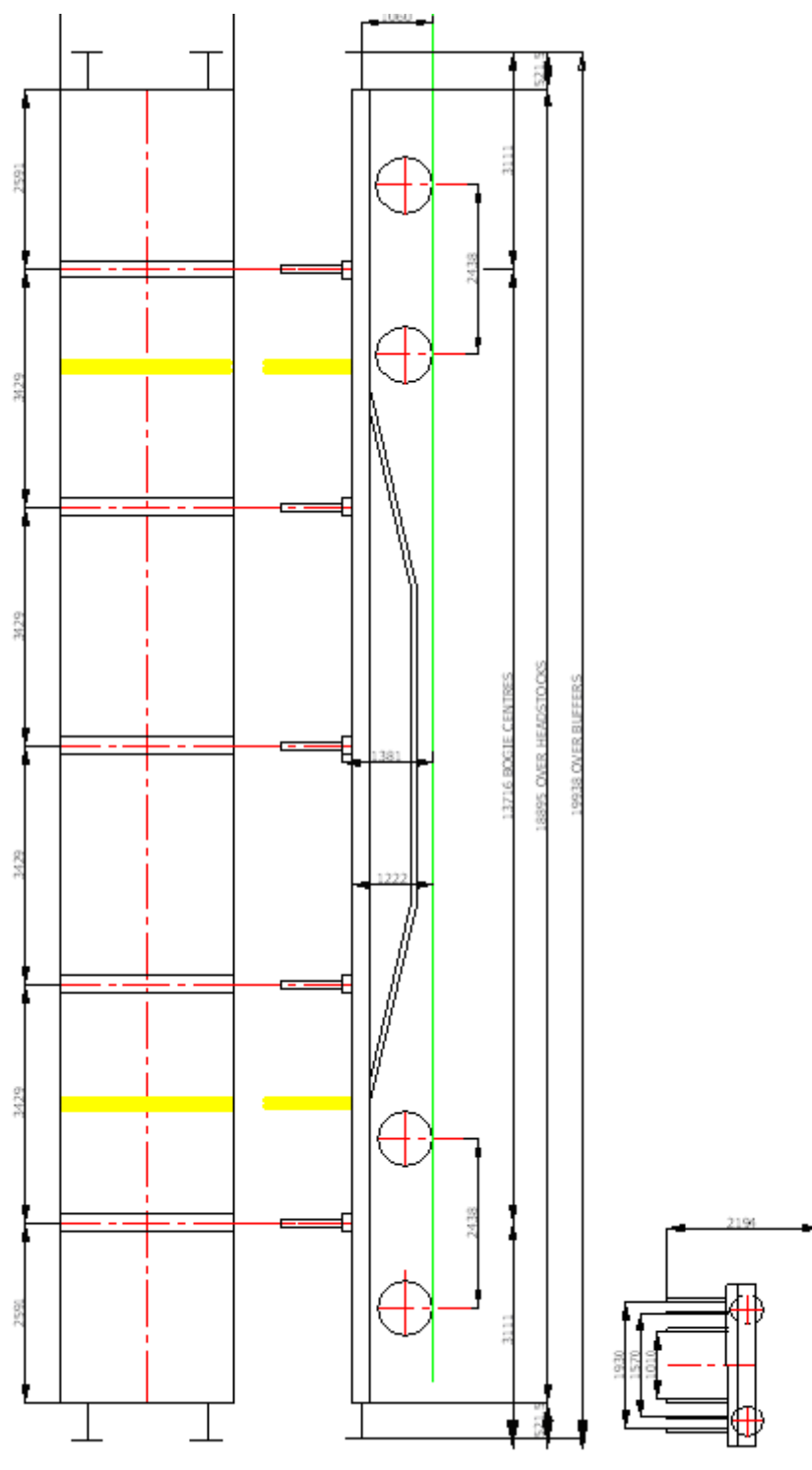


Wagon Type:		Commodity	
YFA Covered Stumec		Rails up to 18.288m in length	
Tare	27.4 t	RA	6
Payload	27.62 t	Length over buffers	19.938 m
Cubic capacity	N/A	Bolster Height	1.495 m
Remarks	Fitted with 2 mini cranes for side load/unload. Direction sensitive		



Weight distribution					
FIVE BOLSTER POSITIONS					TOTAL PAYLOAD (t)
1	2	3	4	5	
5.524	5.524	5.524	5.524	5.524	27.62
8.28	8.28		8.28	8.28	33.12

YFA Salmon Stumec Wagon



Wagon Type:		Commodity	
YXA/IFA (TRS Sleeper Carrier)		Concrete/Timber Sleepers in Pallets Scrap Pallets Tool Pallets	
Tare	24.9 t	RA	4
Payload	40.1 t	Length over buffers	
Cubic capacity		Height	
Remarks			

