

WAGON TYPE	COMMODITY
YVA Cable Carrier Wagons	Cable Drums

Carrying Capacity:

Tare 23.5 tonnes

Carrying Capacity 15 or 17 tonnes

For exact loading limits see individual wagon or TOPS

Load Positioning:



YVA wagons are fitted with 5 cable drum frames.

YVA wagons can be loaded with up to 5 cable drums.

Drums shall be loaded evenly along the wagon to maintain equal weight distribution.



Cable drums shall be loaded on to the frame spindle and retained by the spindle collars. One collar is fixed whilst the other is moveable; this is fixed in position by a locking nut. The spindle can only locate into the frame in the correct orientation.



Spindles shall be locked in position by the retaining pin on both sides.



The maximum diameter drum is 2300 mm
The maximum drum width is 1040 mm
The maximum permitted drum weight is 3000 kg

Stanchions: N/A

Bolsters: N/A

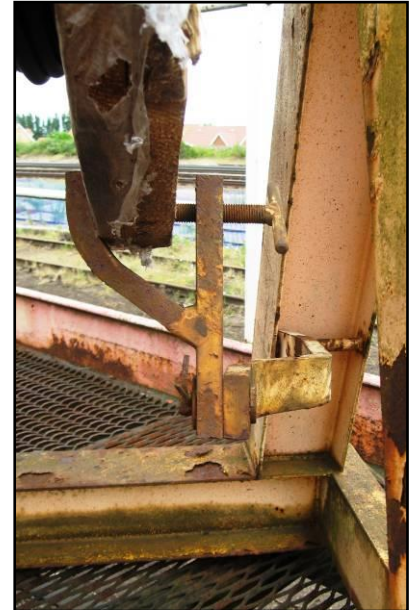
Dunnage: Any timber packing, polythene wrapping or banding shall be removed from the drum/wagon.

Unsecured Loads: Not permitted.

Securing Equipment:



Cable drums shall be secured with the cable anchors or a hand ratchet strap for transit. The cable anchor shall be positioned on the edge of the drum and screwed up tightly.



Cable ends shall be secured with nails, cable ties or rope to prevent the cable unwinding.

Voids: N/A/

Doors/Sides: Special steps are provided for access on and off the wagon.

Access points need to be closed with the safety rail for all transit moves and whilst staff are working on the wagons.



Special Equipment:



Power jumper cables should be either connected between wagons or be safely stowed using the cable hook when not in use.

Competency Level: LE SV

Safety:

These wagons are only permitted to deploy cable whilst working under T3 Possession.

Be aware of tripping hazards whilst working on wagon platforms

Wear P.P.E. at all times.