

SMTH – Industry Session April 2025

9th April & 16th April 2025

Simpler.
Better.
Greener.

Current Status of SMTH Transition into Sentinel

9th &* 16th April 2025

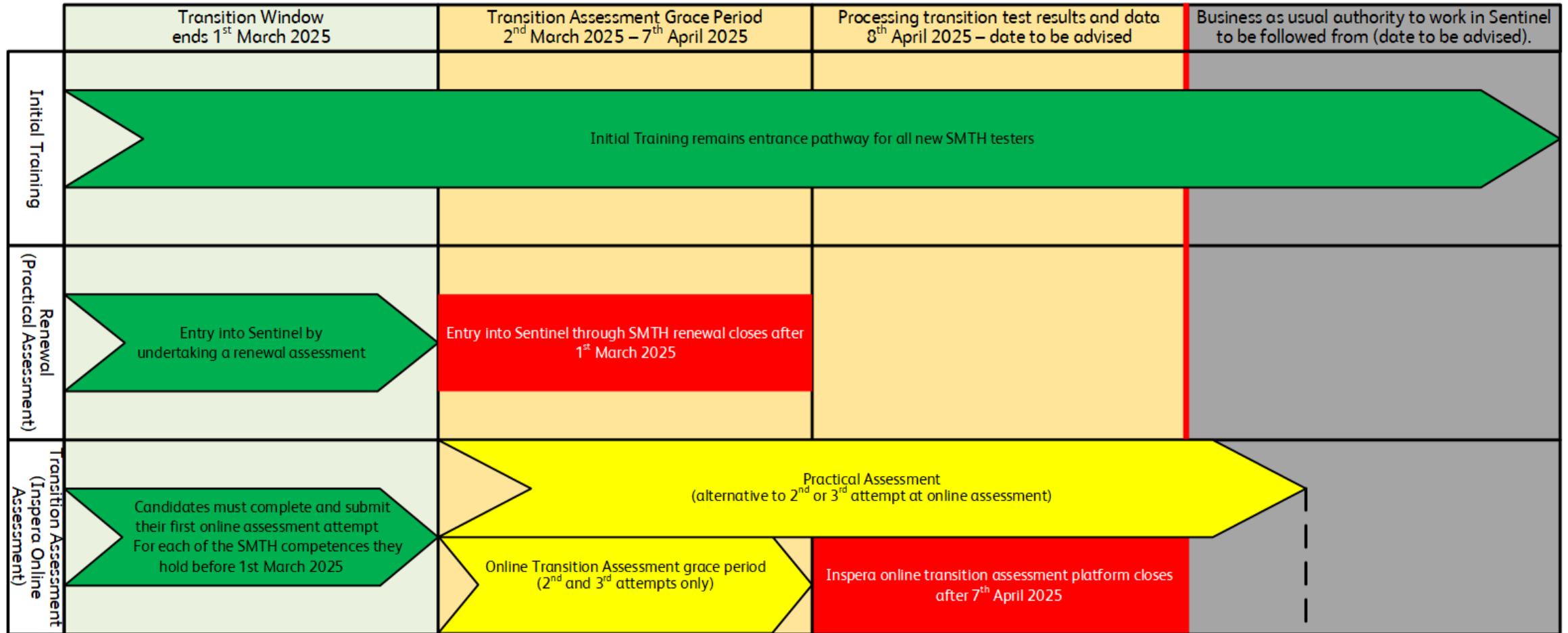
Current Status of SMTH Transition into Sentinel

9th & 16th April 2025

- Online assessment platform is now closed. We can still provide an assessment through the platform in the event of any appeals etc.
- The only way to move from probationary to full SMTH competence is through a practical assessment.
- Previous communication confirmed the 'go-live' date for SMTH in Sentinel as 14th April 2025 following the completion of SMTH data loading and verification in the Sentinel system. We are, however aware of the close proximity to the Easter bank holiday and the associated work and leave implications, as a result, we will not be seeking to 'go live' until after Easter 2025 (the exact date is yet to be confirmed).
- We request that SMTH holders external to Network Rail continue to use their current paper authority to work until further notice
- Training is still able to be conducted through assured suppliers (list on Safety Central - [SMTH Industry Competence Management Standardisation - Safety Central](#))

Updated Timeline for SMTH

Version 2 updated 7th April 2025



Version 2
7th April 2025

1st March 2026

SMTH Data Validation Process

9th & 16th April 2025 update

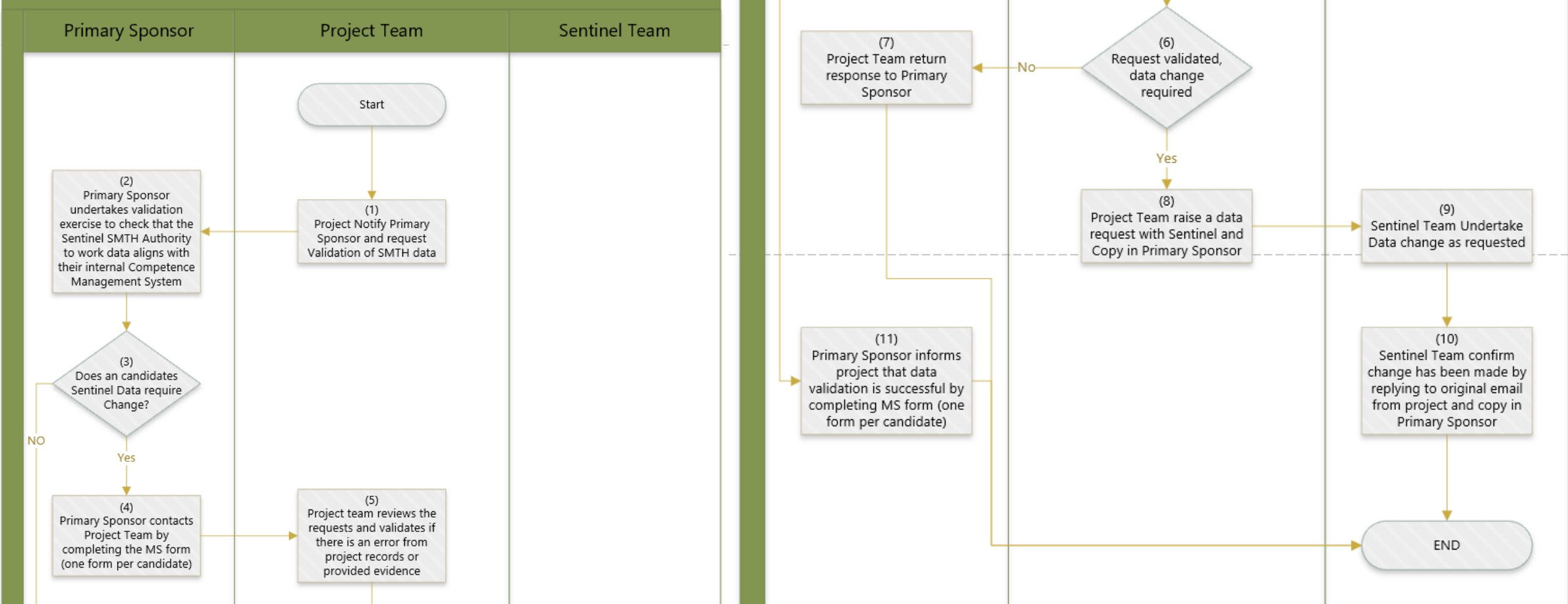
SMTH Data Validation Process

Summary of why we are undertaking the task

- Online assessment platform is now closed. We can still provide an assessment through the platform in the event of any appeals etc.
- The SMTH Sentinel Data Validation Process is designed to ensure that the SMTH competences in the Sentinel system are accurate and align with the Primary Sponsors' Competence Management Systems.
- This process is applicable to all SMTH holders who have transitioned their SMTH competence using one of the pathways as part of the 'Signalling Occupational Framework Program'.
- The objective is to validate the data loaded into Sentinel and ensure it reflects the internal Competence Management Systems of the Primary Sponsors.

SMTH Data validation process

SMTH Sentinel Data Validation Process



Key points: SMTH Data Validation

- We are seeking confirmation from primary sponsors that the data in Sentinel for each of their SMTH holders is correct or details of any identified issues. A separate response needs to be submitted for each SMTH holder. Any identified errors are to be submitted to the project team through the communicated mechanism.
- The project will review each response to validate before requesting the change with the Sentinel team.
- The project will request the data change with the Sentinel team and confirm it has been updated.
- The primary sponsor can then confirm it is correct.

How SMTH competence shows in Sentinel

What assessment outcomes lead to applicable levels being awarded.

How assessment outcomes link to Levels on Sentinel

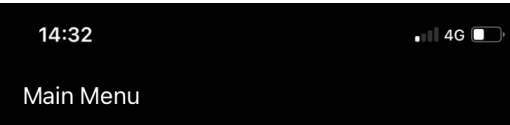
Level / Pathway	Initial Training	Online Transition Assessment	Practical Assessment
Competent	N/A	Full competence on Sentinel profile with no extension to expiry date	Full competence on Sentinel profile validity of 36 months from completion
Not-Yet Competent	Signal Maintenance Tester in Action Learning	Signal Maintenance Tester in Action learning with the expiry date calculated from the 1 st online test attempt. Shown as a probationary status on Sentinel.	Signal Maintenance Tester in Action learning with the expiry date calculated from the Assessment date. Shown as a probationary status on Sentinel.
Not Competent	Individual that requires Training	Not shown on Sentinel. Full SMTH initial training required.	Not shown on Sentinel. Full SMTH initial training required.

Sentinel profile examples

OFFICIAL



Date to be confirmed



1 Location not found
Hours since last swipe out :

Record Competence Usage

Competences Held	
Competence	Expiry
CCS Signal Maintenance Testing	
CCS Signal Maintenance Testing Core Skills	19/11/2025
CCS Signal Maintenance Testing Core Skills; Diversion of a Circuit	27/04/2026
CCS Signal Maintenance Testing Core Skills; Aspect Testing	19/11/2025
CCS Signal Maintenance Testing Core Skills; Points Testing	12/08/2024
CCS Signal Maintenance Testing Core Skills; Cable Function Testing	27/04/2026

Competent Signal
Maintenance Tester



1 Location not found
Hours since last swipe out :

Record Competence Usage

Competences Held	
Competence	Expiry
CCS Signal Maintenance Testing	
P CCS Signal Maintenance Testing Core Skills	19/11/2025
P CCS Signal Maintenance Testing Core Skills; Diversion of a Circuit	27/04/2026
P CCS Signal Maintenance Testing Core Skills; Aspect Testing	19/11/2025
P CCS Signal Maintenance Testing Core Skills; Points Testing	12/08/2024
P CCS Signal Maintenance Testing Core Skills; Cable Function Testing	27/04/2026

Signal Maintenance Tester in
Action Learning
(P for Probationary)



1 Location not found
Hours since last swipe out :

Record Competence Usage

Competences Held	
Competence	Expiry
CCS Signal Maintenance Testing	
X CCS Signal Maintenance Testing Core Skills	19/11/2025
X CCS Signal Maintenance Testing Core Skills; Diversion of a Circuit	27/04/2026
X CCS Signal Maintenance Testing Core Skills; Aspect Testing	19/11/2025
X CCS Signal Maintenance Testing Core Skills; Points Testing	12/08/2024
X CCS Signal Maintenance Testing Core Skills; Cable Function Testing	27/04/2026

Individual that
requires training – **not
allowed to test**



1 Location not found
Hours since last swipe out :

Record Competence Usage

Competences Held	
Competence	Expiry
Track Safety	
Test Before Touch for OLE detailed briefing event	29/12/2072
Personal Track Safety	31/03/2025
AC Lines	31/03/2025
Controller of Site Safety	23/02/2024
Overhead Line Permit	23/02/2024
P Engineering Supervisor	10/02/2024
NR/L3/OCS/084 (issue 3) brief 2011	01/02/2073

No record of SMTH
in Sentinel – **not
allowed to test**

SMTH competence appears in Sentinel – Sentinel is single source of individual's Authority to Work for 5 key SMTH competences

Summary of key points

9th & 16th April 2025

- The transition of SMTH competence into the Sentinel system has been completed. We are now entering into a data validation process.
- Primary sponsors are required to check their SMTH competency holders Sentinel data is correct and inform the project team if it is correct or if there is an error. The mechanism to undertake this task will be communicated shortly.
- We will only act on requests for data changes from the Primary Sponsor.
- We request that SMTH holders external to Network Rail continue to use their current paper authority to work until further notice.

Questions

Thank you for your engagement today

Do you have any further questions?

If you think of a question after this session, please contact us at:
signallingcompetencyframework@networkrail.co.uk