

Safety Advice
Action required following a serious incident

Title: Catastrophic MEWP Boom Failure – Manitou 160 ATJ PLUS and 160 ATJ PLUS RC based MEWPs.

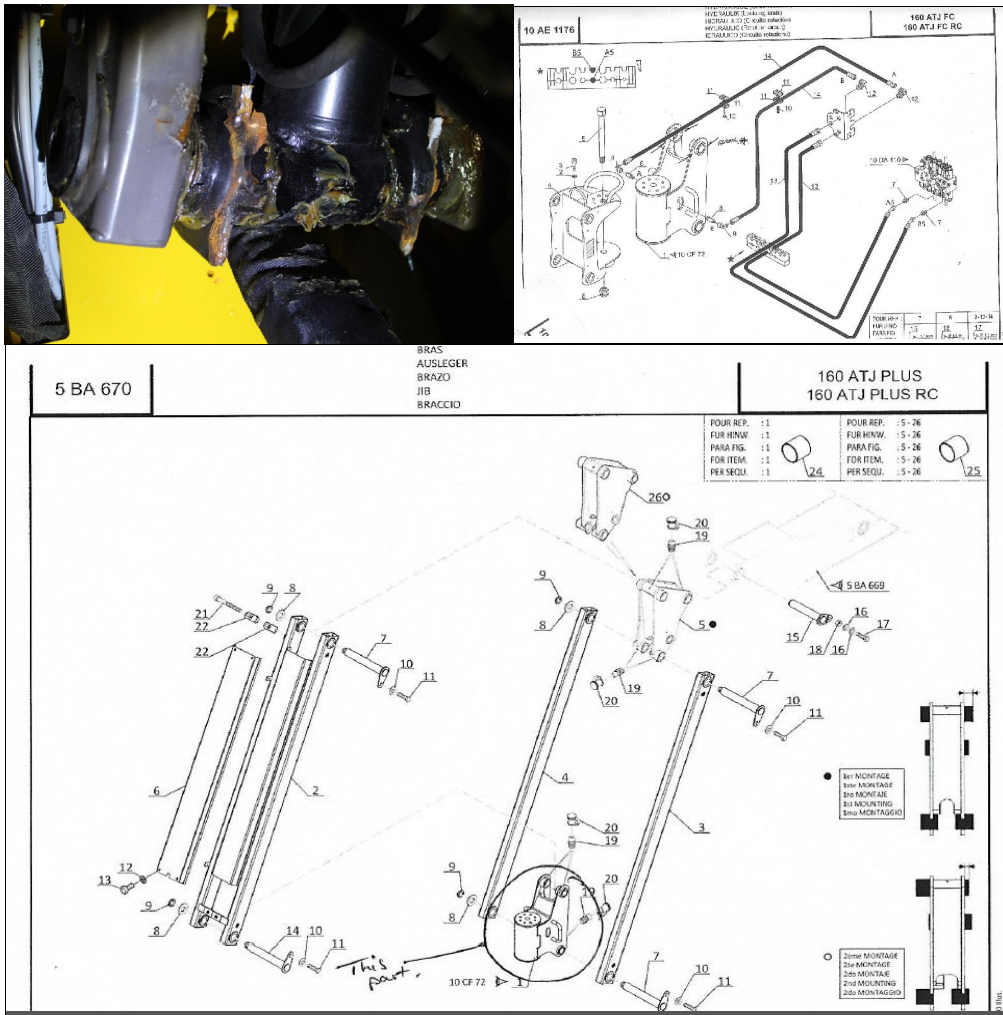
Issued to: All Network Rail line managers safety professionals and RISQS registered contractors

Location: Cowlairs, Scotland.

Contacts: Olufemi Okeya, Olufemi.Okeya@networkrail.co.uk 07515 625386;

Ian Morgan, Ian.Morgan@networkrail.co.uk 07824410392;

Malcolm Miles Malcolm.Miles2@networkrail.co.uk 07917330580.



Overview

A Rail Product ART 17 TH MEWP boom rotor assembly holding the basket failed whilst the machine was in travelling mode resulting in the basket falling backwards onto the track. The basket was about 1 metre above rail head level at the time with one operator and light tools in the basket. The operator was not injured.

The incident occurred at approximately 01:35 this morning (03/03/2017). The MEWP had accessed at Cowlairs Road Rail Access Point (RRAP) on the down E&G, at 1m 1600y, Structure EG02/35. The MEWP was due to carry out Overhead Line Equipment installations

as part of the Edinburgh to Glasgow Improvement Programme (EGIP). All other machines on site were off-tracked and quarantined. RCM Scotland advised, EGIP Alliance & NR On Call advised. RAIB Advised. A prohibition has since been placed on the use of these machines by the companies involved.

All known MEWPs based on the Manitou models (160 ATJ PLUS & 160 ATJ PLUS RC) have been placed on the Do Not Use list until NDT inspection has been completed and machines confirmed to be fit for purpose. Those specifically identified are:

- Rail Products UK/Manitou ART17T;
- Rail Products UK/Manitou ART17T(H);
- Neotec SkyRailer 400RR

Whilst the exact cause of the failure is not yet known, it is believed to be a manufacturing related defect. This defect potentially affects all Manitou 160 ATJ PLUS models and Manitou 160 ATJ PLUS RC models (both rail mounted and construction variety).

The known converters for the Manitou base models (160 ATJ PLUS & 160 ATJ PLUS RC) have been informed and are arranging Non-Destructive Testing (NDT) inspections of their fleets produced for use on rail.

Immediate action required.

- All MEWPs based on the Manitou models 160 ATJ PLUS and 160 ATJ PLUS RC (both rail mounted and construction variety) are IMMEDIATELY to be quarantined.
- Upon completion of NDT inspection and where confirmed as fit for purpose, evidence of inspection and confirmation shall be sent to the 3 contacts provided before a machine can be removed from the Do Not Use list. This shall include as a minimum:
 - 12 digit number
 - EAC number and expiry date
 - Converter name and contact number
 - Evidence of NDT inspection
 - Confirmation of fitness for purpose
- All other known conversions (where not specifically identified above) are to be reported IMMEDIATELY to contacts provided above so that they may also be placed on the Do Not Use list.
- An investigation is being carried out by the companies involved and further action may be necessary once the outcome of the initial investigation is known.