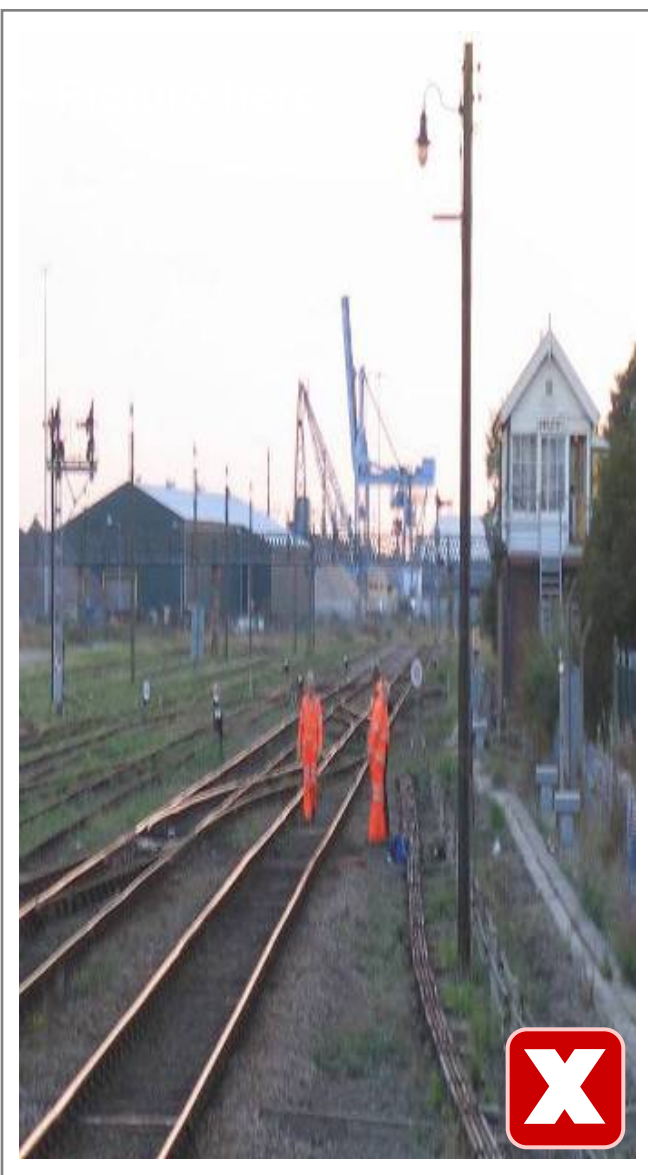


Working On or Near The Line



Key Points:

- Preferred 'Safe System of Work' options to be used are 'Safe Guarded' (Possession or Line Blockage) or Fenced
- If any other method is used then prior authorisation from Network Rail Programme Director must be sought
- Magnetic fencing is an option to segregate persons working from live running lines



Document No.	SHELT - VS	Date Issued:	14/11/2014	Issue:	V1.0
--------------	------------	--------------	------------	--------	------