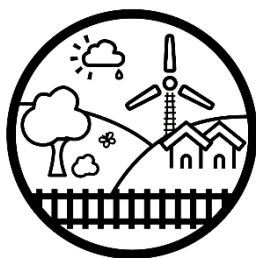


Connecting Communities with the Environment Guidance Note

NR/GN/ESD14

Published Date: April 2022

Version No. 2



Contents

Network Rail’s Commitments.....	3
Examples of how Network Rail, our contractors and our supply chains can connect communities with the environment	3
What can be measured using the Rail Social Value Tool.....	5
Additional links.....	5

Network Rail's Commitments

- ✓ [Wellbeing: Promote community integration and enhance people's physical and mental wellbeing](#)
- ✓ [Improved biodiversity of plants and wildlife](#)

Examples of how Network Rail, our contractors and our supply chains can connect communities with the environment

Hold public information events to let local communities know of changes to their surrounding environment, such as removing trees or vegetation.

When working on land, leave it in a better condition than you arrived on it. For example: by clearing litter, by replanting appropriately.



Network Rail volunteers clearing up Copsewood Road community garden in Watford

To prevent lineside litter contaminating rivers, canals and surrounding land, manage waste effectively on site and remove all waste from site after works. Reuse or recycle, for example through [Community Wood Recycling](#).

Engage workplace colleagues in environmental activity: clean up gardens or outside spaces; make a food or native flower growing areas; arrange rainwater harvesting; improve recycling rates; compost food waste; implement a green travel plan, making use of carpools, bike lanes and walking routes; turn off electrical appliances and equipment at the end of the day

Use paid volunteer leave to work with an environmental charity.

Create and enhance nature reserves and green spaces.

Give the public access to green spaces.

Deliver environmental projects. For example: clear and improve under-utilised land; plant wildflower areas; plant vegetables; plant trees; install and maintain planters and raised beds.

Create a wildlife habitat, for example by providing bird homes (to provide shelter and support nesting birds) or bug hotels.

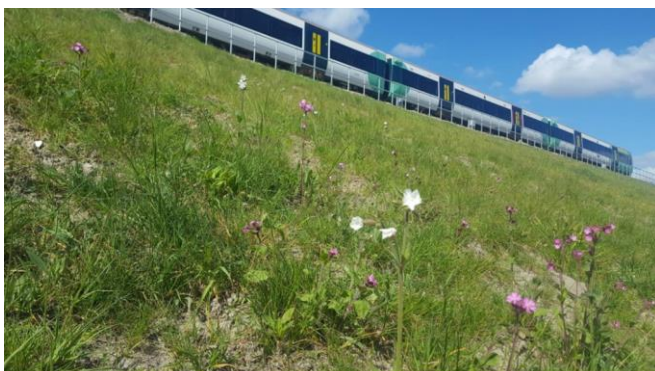
Involve a local school, community rail or community group in environmental activities.

Work with an environmental charity. For example, [Tree Council](#).



Members of the local Hadley Wood community, Tree Council and Network Rail at tree planting

Support local wildlife by planting specific varieties of species of plants/trees.



Wildflowers planted by the Bermondsey Dive Under Project, Thameslink Programme, London

Participate in national environmental campaigns, such as the [Great British Spring Clean](#).

Take account of the social impact of any visually prominent structures that will replace trees and/or other vegetation. Agree design responses with the Employer's Representative.

Take account of the safety implications of removing lineside vegetation, such as improved access for trespassers. Agree design responses with the Employer's Representative.

What can be measured using the [Rail Social Value Tool](#)

Impact	Sub-impact	Stakeholder Group / Unit of Measurement	
Community & Charity	Charitable & community volunteering	Community Volunteering hours	Number of community volunteer hours
		Workforce volunteer hours	Number of workforce volunteer hours
Stakeholder engagement & customers	Stakeholder engagement & consultation	Stakeholder engagement	Number of stakeholders engaged
Climate & environment	Biodiversity	Biodiversity net gain	Net gain of biodiversity units
		Trees - number	Net gain in number of trees
		Trees - ha	Net gain in hectares of trees
	Green & public spaces	Green space	Net change in green space (ha)
		Greenspace Visits	Number of visitors to a public greenspace
		Green space PPN 06/20	Number of green spaces created under the contract, by region

Indicators in green text (above) are monetised in the RSVT, using values that have been calculated in a way that applies OECD and UK Treasury Green Book principles.

Additional links

[Biodiversity on Britain's Railways](#)

[Garden Organic](#)

[Woodland Trust](#)

[The Wildlife Trusts](#)

Article: ["In grey city spaces, a greener future is growing"](#)

Article: ["Meanwhile, in London: Making use of London's empty spaces"](#)

Biodiversity and Wellbeing materials from the [Supply Chain Sustainability School](#)