

Level Crossing Toolkit

(2022/2023)



1

2

3

4

5

Your level crossing toolkit

Using the toolkit

Understanding the problem

RSSB report 2021/22

External messaging

Key messages by audience
Key national statistics

Available resources

Downloadable resources
Editable resources
Printable items
Promotional merchandise
Educational resources
Engage with local audiences
Real life outcomes
Case studies
Approved photos
Videos
Related Campaign

Appendices

Types of level crossing
Table 8
Rule book
RSSB report data 2020/21

Using the toolkit

This toolkit has been created to help you deliver outreach work with members of the public on level crossing safety. There are no right or wrong ways to use the content. It is designed to be flexible to suit your needs.

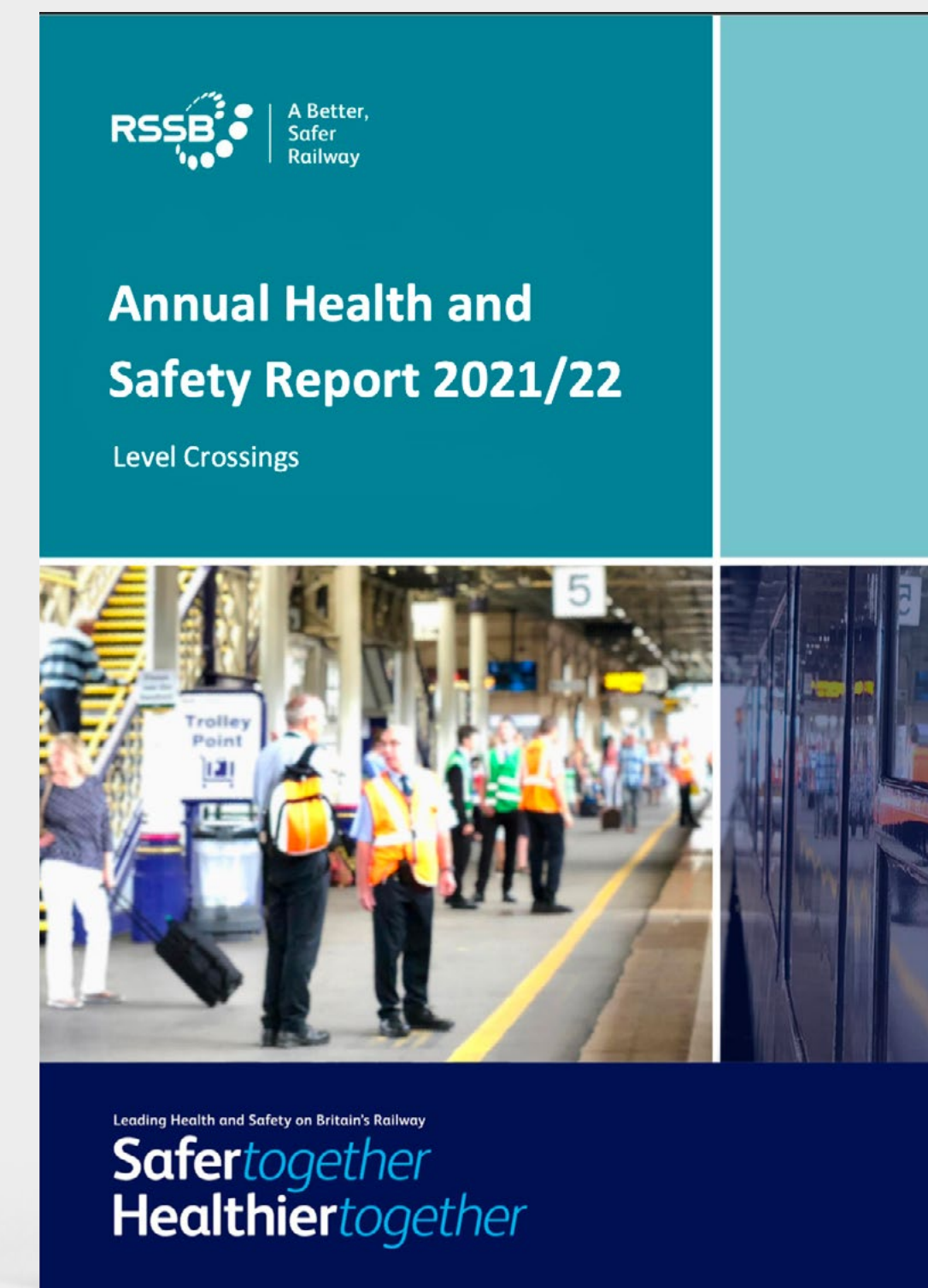
The content in the toolkit itself provides a national overview, along with key messages and facts approved for external use. Given the variety of ways in which you and your colleagues interact with the public, we have included a range of standardised resources, as well as links to resources that you can adapt for your needs.

This is your toolkit,
so use it in the way
you feel is most
appropriate to deliver
local messages about
level crossing safety.

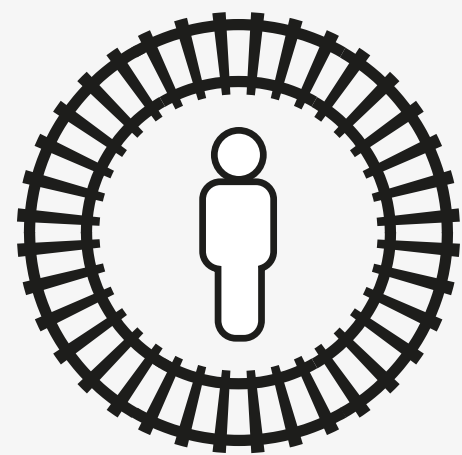
RSSB's Annual Health and Safety Report 2021/22

Headlines

- ” Seven pedestrians died after being struck by trains at level crossings in 2021/22.
- ” There were three train collisions with road vehicles at level crossings, in 2021/22
- ” Incidents at level crossings caused by user behaviour (such as near misses and incorrect usage) have increased. This has included an increase in near misses involving goods vehicles and dog walkers.



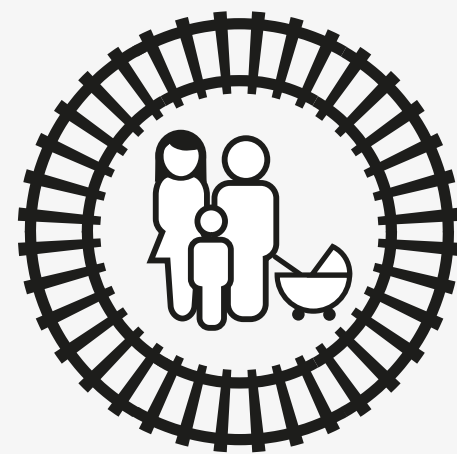
Key messages by audience



Pedestrians

“
Be patient and
follow instructions
on how to cross
safely.

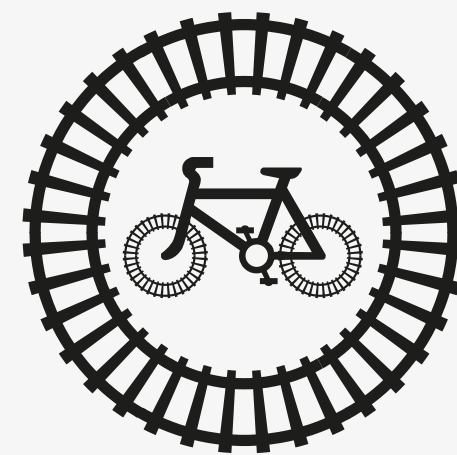
”



Parents

“
Help your children
understand how
to cross safely at
level crossings.

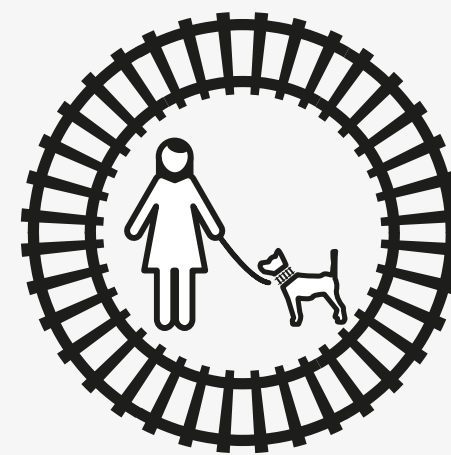
”



Cyclists

“
For your own
safety, dismount
and check
both ways.

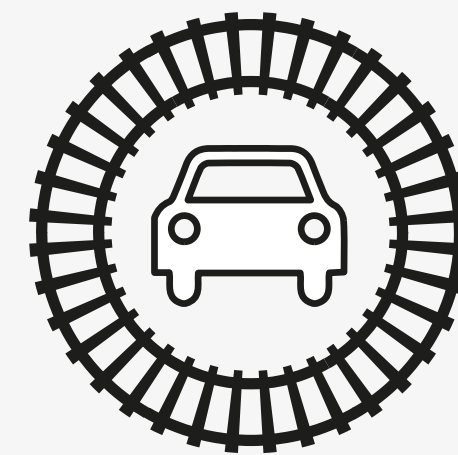
”



Dog walkers

“
Keep control of
your dog and
stay alert at Level
Crossings.

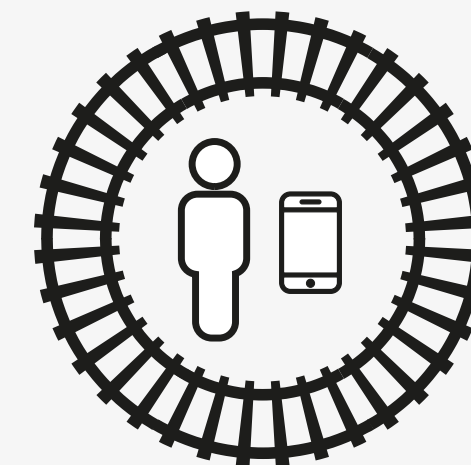
”



Drivers

“
Every vehicle
must stop for
red lights at
level crossings.

”



Young people

“
Being distracted
at level crossings
can kill.

”



Farm workers

“
Never stop
on the crossing,
even if the track
looks clear.

”

Stop, look and listen

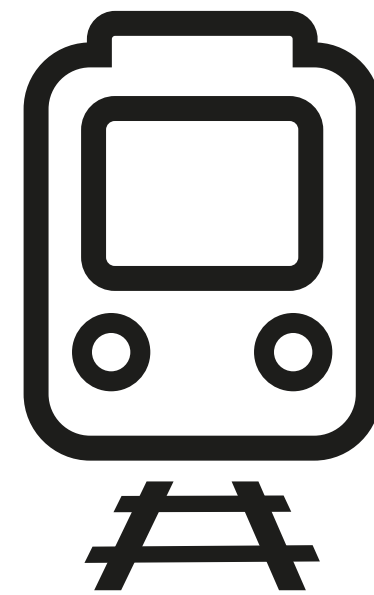
Key national statistics



**accidental fatalities
at level crossings
in 2021/2022**



**accidental fatalities
since 2008/09**
(67 pedestrians
and 22 road
vehicle users)

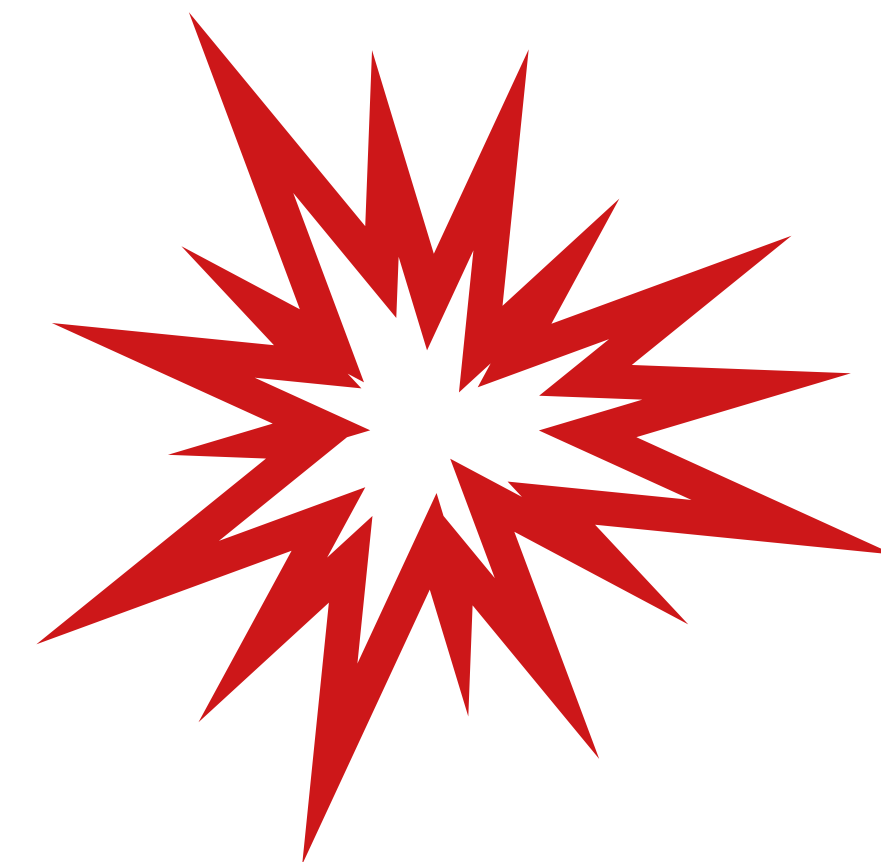


447

**near misses in
2021/22**

1,328

level crossings closed since 2009



3

**collisions
between
train and
road vehicles
in 2021/22**

Edit and download to add your own statistics

Downloadable resources

Poster

Download English Download Welsh

Postcard

Download English Download Welsh

Easy read leaflet

Download English Download Welsh

Pull-up banner

Download English Download Welsh


Digital flyer

N.B. This flyer should be used alongside further safety information for context e.g. as an attachment to an email, to support a social media post or as part of a presentation.

Download English Download Welsh

Downloadable resources

Leaflet



Download English pedestrians

Download Welsh pedestrians

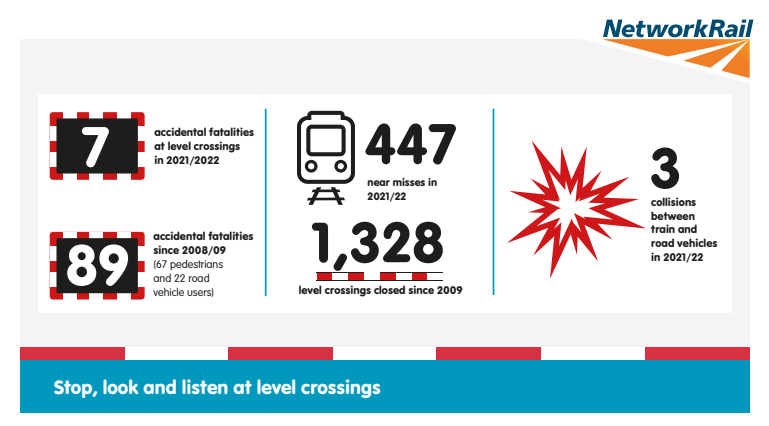
Download English drivers

Download Welsh drivers

Download English UWC

Download Welsh UWC

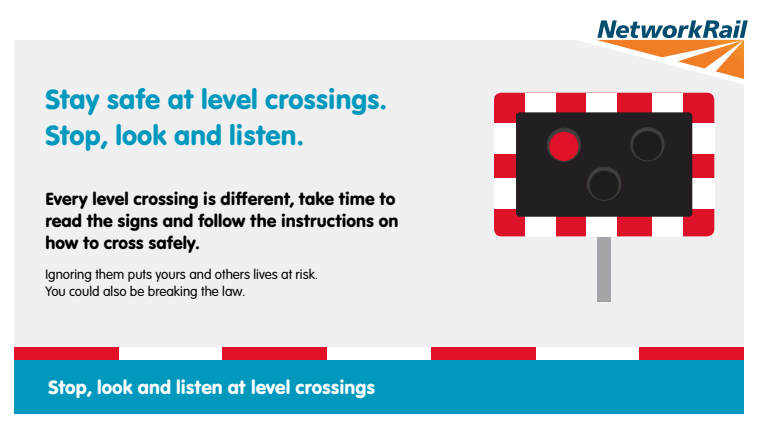
Infographic



Download English

Download Welsh

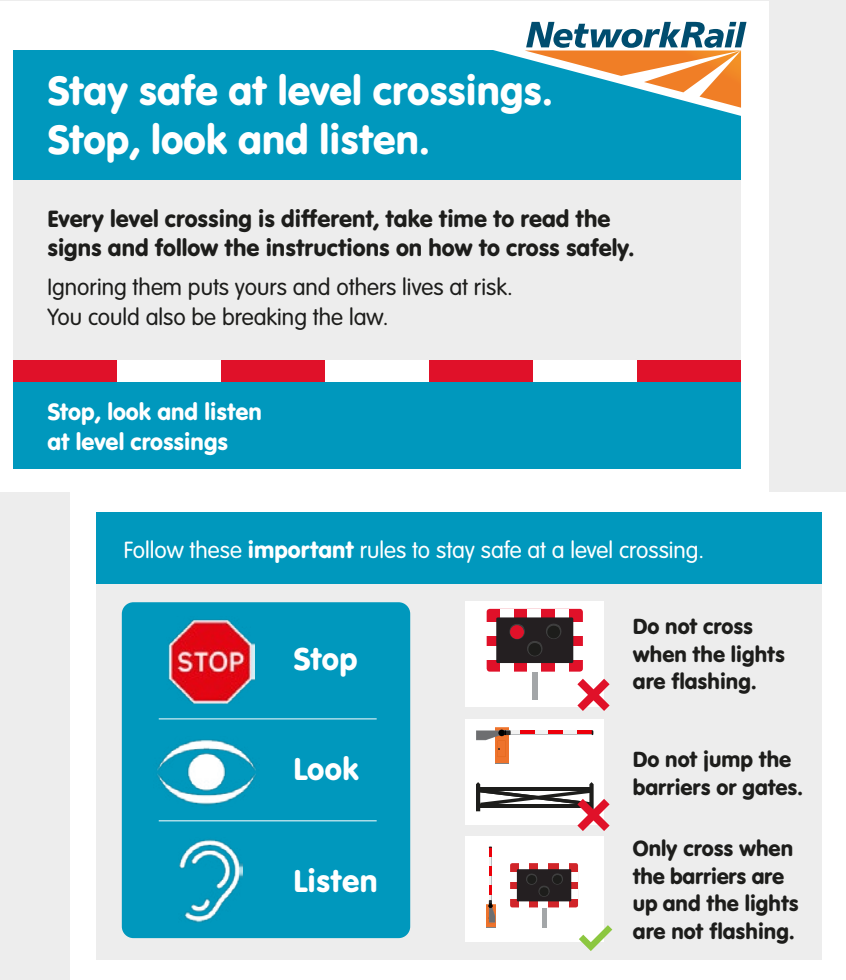
Digital OIS station screen



Download English

Download Welsh

Wallet card



Download English

Download Welsh

Editable resources to help you locally

We've developed editable and printable resources to help you start conversations with the public.

To access and use the templates:

1. Log in to Network Rail [Brand Hub](#) (you'll need to register if using for the first time)
2. Go to the Templates section and click on the template you want to use.
3. Click the Create button.

Alternatively once logged into brand hub, you can click on the images in this toolkit to go directly to the template of your choice.

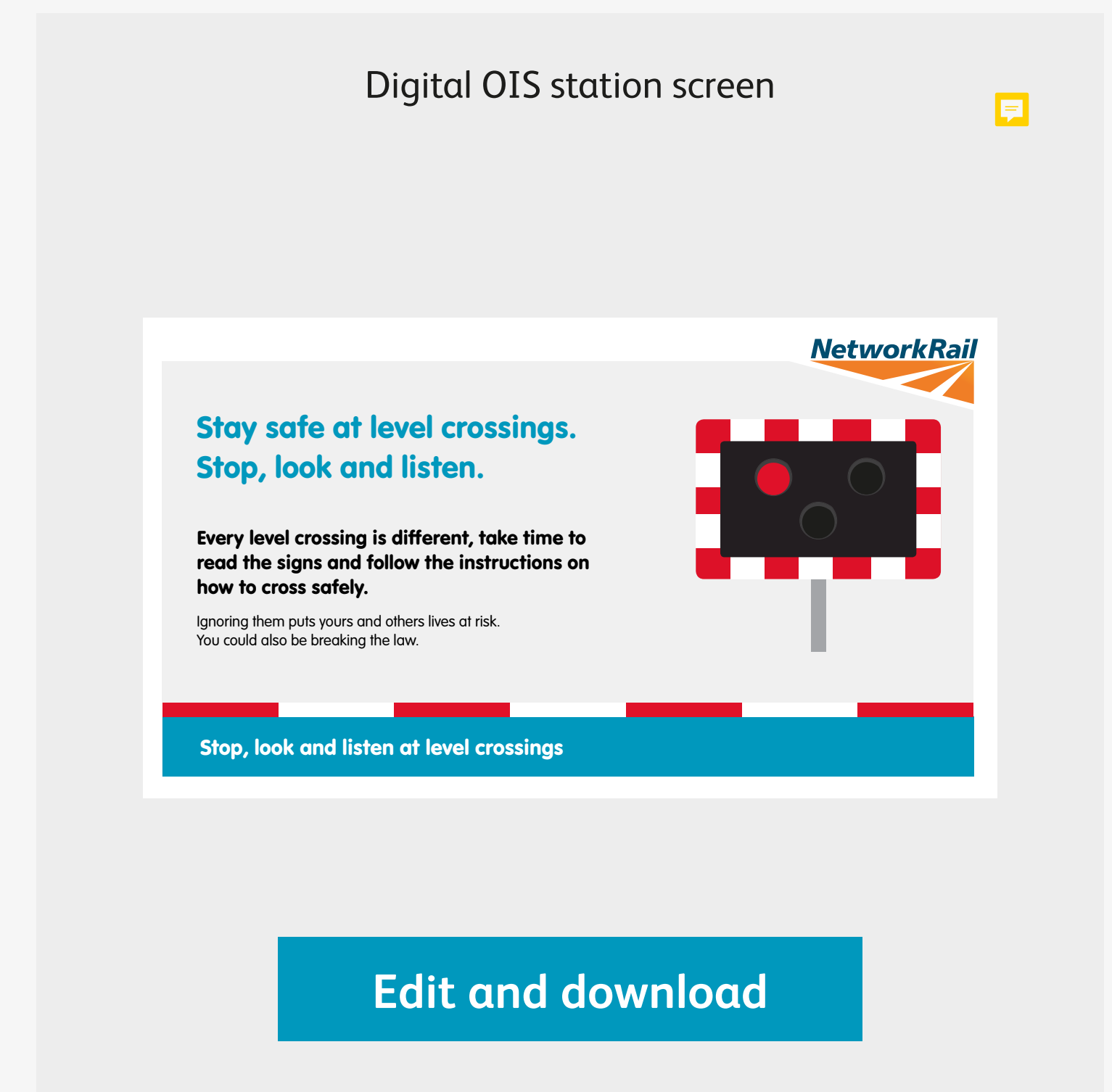
Within the templates you can choose suggested text for the following audience groups.

- Pedestrians
- Parents
- Dog walkers
- Farm workers
- Drivers
- Cyclists
- Young people.

You can also create custom text to target any other specific audiences you may have.

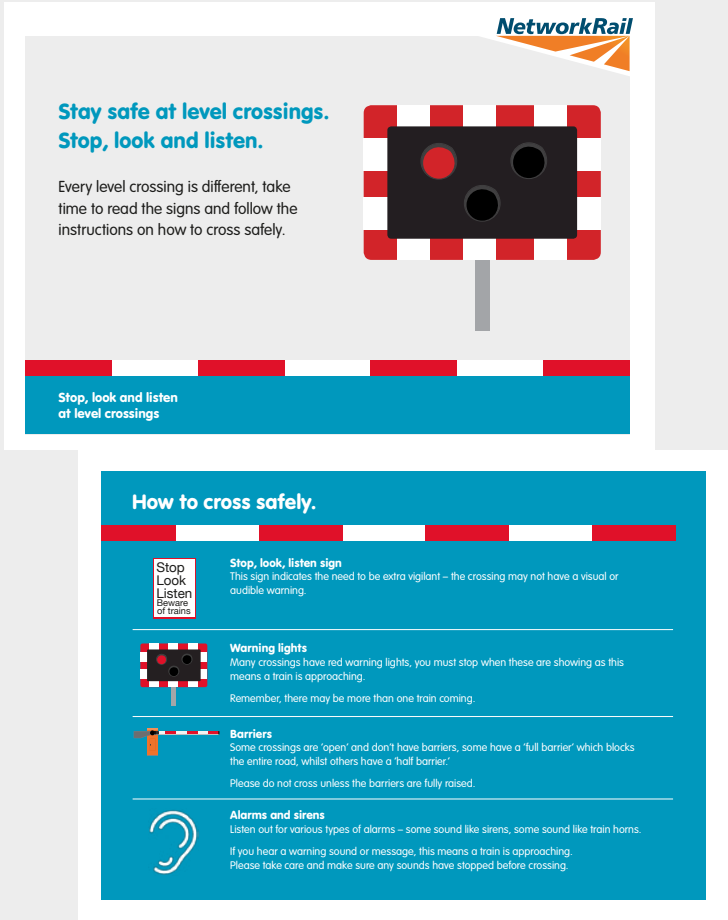
For further step by step guidance on how to use the brand hub please refer to our [editable template user guide](#).

If you have any questions about how to use the templates, visit the FAQs page on the Brand Hub or contact marketing@networkrail.co.uk



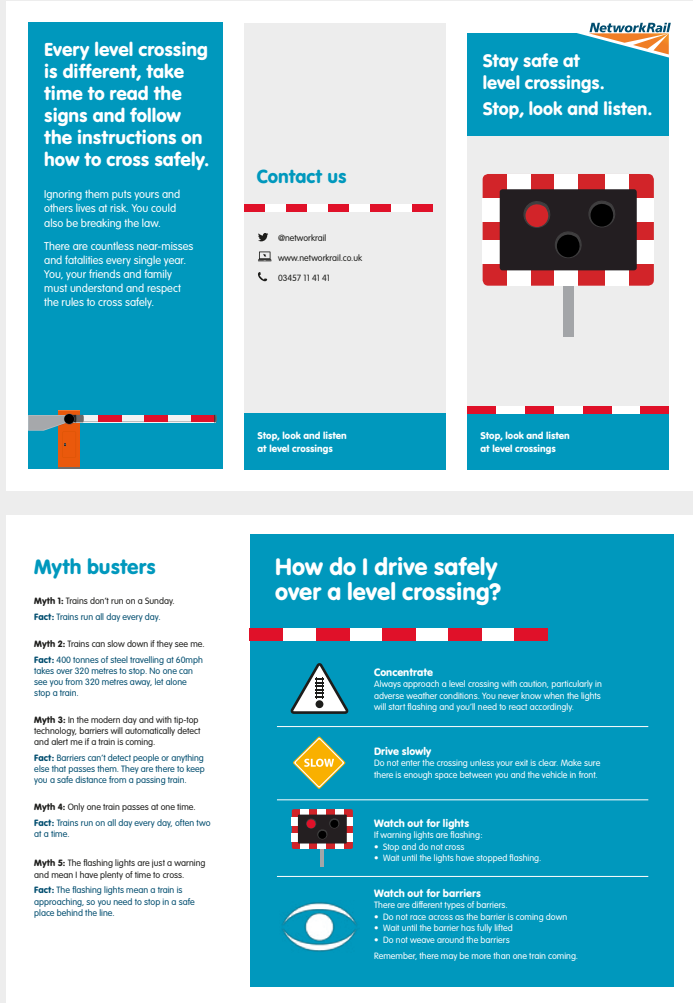
Editable resources to help you locally

Postcard



Edit and download

Leaflet



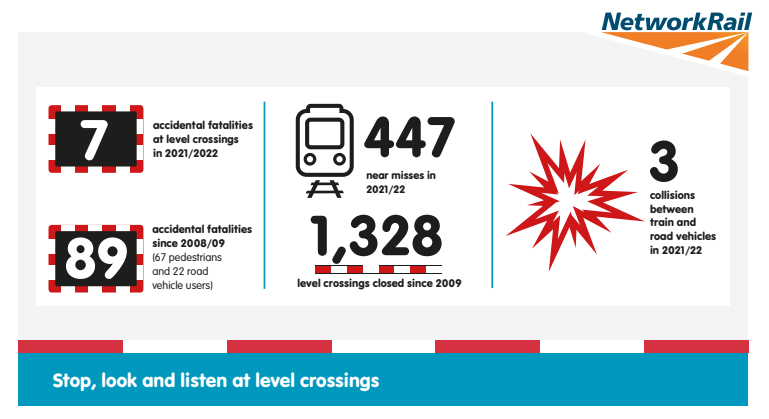
Edit and download

Poster



Edit and download

Infographic



Edit and download

Printable items

Any printable items you download from Safety Central or create on the Brand Hub can be ordered through our partnership with APS Solutions for professional printing.

Costs

To support routes with getting professionally finished printed resources there is some central budget available. To understand if there is budget remaining for your route please contact marketing@networkrail.co.uk

Once the allocated route budget has been used you can order additional items using your own budget.

The price per asset is as follows:

- A3 poster* – £3.47 per item
- Tri fold leaflet – £0.68 per item
- Easy read leaflet – £0.89 per item
- Pull-up banner – £101.52 per item
- Post card – £0.41 per item
- Wallet card – £0.38 per item.

Please note that these are the maximum prices per item and may be lower if more items are ordered.

*If you require posters in an alternative size, please send the provided A3 artwork to APS Solutions and let them know what size you want it resizing to e.g. Double Royal.



Printable items

Ordering process

To order printed items, please:

1. Create/ download your print artwork as a PDF on Brand Hub or Safety Central
2. Email the artwork to nrprint@theapsgroup.com Please note the email subject must include your route and toolkit topic e.g. Wessex level crossing toolkit resources.

~~The email should contain:~~

- Quantity of each item required
- Size of items required – you can order posters in any size required.
- Your route
- Contact name
- Full delivery address
- ~~Purchase Order number (If using the central print budget please quote PO number 5021921).~~

3. Deliveries will be made to the address provided within 72 hours of the receipt of the order.

~~It is important to include your route name when placing an order so that orders are processed under the correct budgets.~~

If you have any questions, please contact APS Solutions on nrprint@theapsgroup.com or 0759 541 4257 (Option 1).

Promotional merchandise

We have created a range of branded merchandise to support you with engaging various community groups on level crossing safety.

To support routes with purchasing an initial stock of merchandise there is some central budget available. To understand if there is budget remaining for your route please contact marketing@networkrail.co.uk

Once the allocated route budget has been used you can order additional items using your own budget.

To see the range of merchandise available and place an order please visit the [merchandise ecatalogue](#)

Please note prices shown within the ecatalogue are excluding delivery.

Delivery will take 2-3 weeks from placing the order.

Should you have any queries, call 01245 382600 or email sales@allwag.co.uk



Educational resources

Switched On was launched by the rail industry in 2021 to enhance rail safety education provision for children across the UK and mitigate trespass on the rail network.

[3-6 Year Olds](#)

[7-11 Year Olds](#)

[12-16 Year Olds](#)

Welsh Teacher Guidance

[3-6 Year Olds](#)

[7-11 Year Olds](#)

[12-16 Year Olds](#)



Bring level crossing incidents to life when engaging local audiences by using your own or one of these real cases.

‘Near Miss with lawn mower’

A near miss was reported at Culross UWC Level Crossing in Fife, with a person operating a ride-on lawn mower which was stuck on the crossing. The driver assisted the driver and the ride-on lawn mower clear of the crossing.

‘Distracted Dog Walker’

A driver reported a near miss at Milner Court Footpath Crossing between Canterbury West and Sturry with a member of the public. The person was walking dogs over the crossing and wearing headphones as the train approached causing the driver to apply the emergency brake.

‘Stolen vehicle collides with high speed train’

A stolen Range Rover, crashed through the palisade fencing adjacent to the lowered level crossing barriers and collided with the rear of a high speed Azuma passenger train on the Down Main line at Rossington CCTV level crossing (line speed 125 mph). The rear of the train was damaged but there were no reported injuries. The driver of the car fled the scene.

‘Near miss’

The driver of a passenger train reported a near miss with a car that weaved around the lowered barriers and crossed ahead of their train on the Down Main line at Penybedd level crossing (line speed 75 mph).

‘Collision results in threatening injuries’

A train struck a Mercedes van at Shrewsbury Single line (line speed 120 km/h). The driver of the van was airlifted to hospital with life threatening injuries, but the train did not derail and there were no reported injuries to the 15 passengers. No request to use the crossing was made.

Real life outcomes

‘Train crashes into car at level crossing in Frating near Colchester’

<https://www.bbc.co.uk/news/uk-england-essex-59560728>

‘Car in near-miss with train on Cumbria level crossing’

<https://www.bbc.co.uk/news/av/uk-england-cumbria-58202029>

‘Shocking CCTV footage shows woman laying on railway tracks to pose for photographs’

<https://www.networkrailmediacentre.co.uk/news/network-rail-slams-reckless-behaviour-at-tidemills-level-crossing-in-east-sussex>



Case studies

‘Safety failure at Elsenham rail deaths crossing 10 years on’

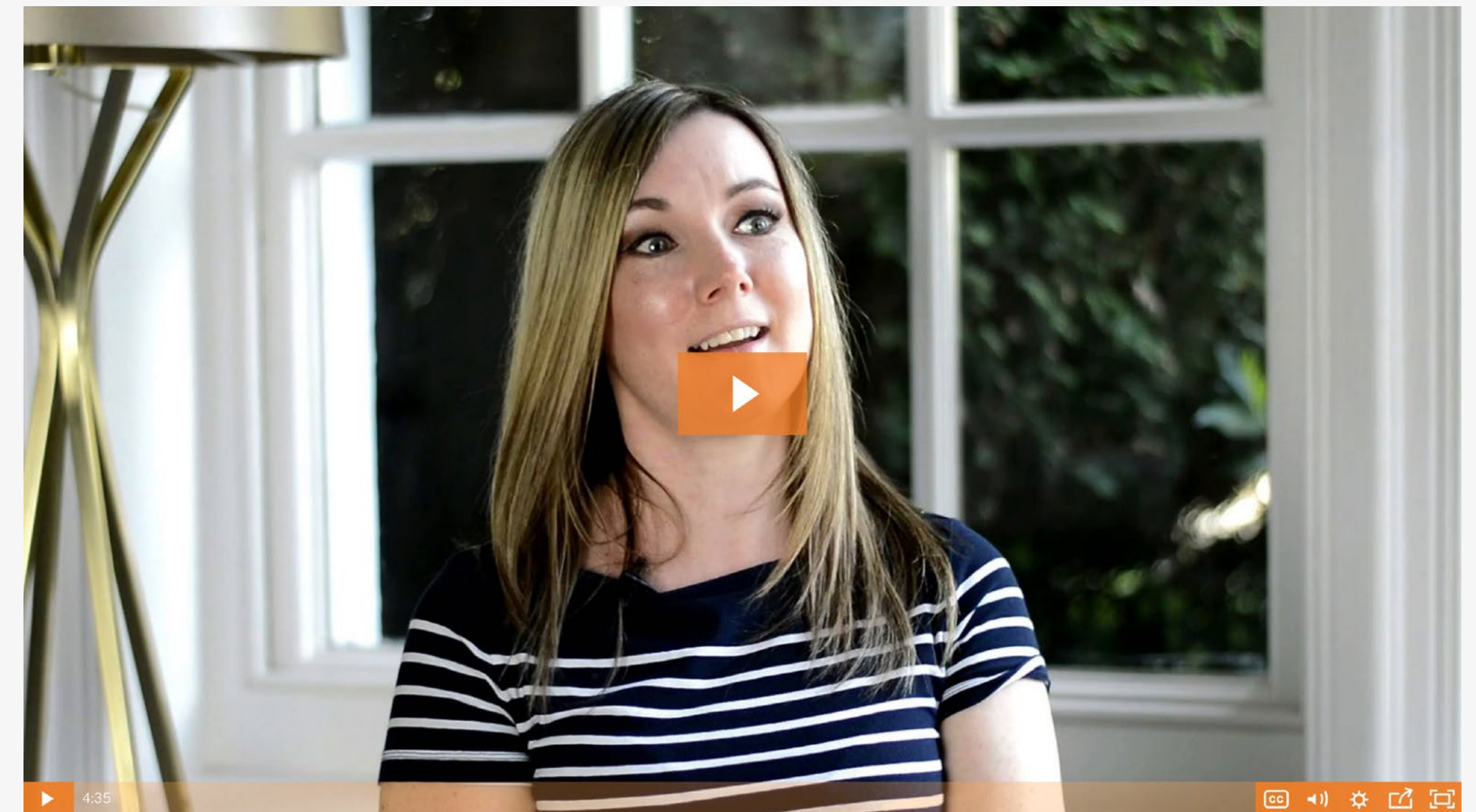
<https://www.bbc.co.uk/news/uk-england-essex-34967459>

‘Woman who lost leg at deadly level crossing renews plea to close it’

<https://www.networkrailmediacentre.co.uk/news/woman-who-lost-her-leg-at-deadly-level-crossing-backs-plans-to-close-it>

‘Tommy Ramshaw died after being hit by a train’

<https://www.bbc.co.uk/news/uk-england-sussex-35797792>



Watch now and download

Approved photos you can download

~~Photos have been made available for use across any level crossing assets you're using.~~

~~To download approved level crossing images please visit the [toolkit Safety Central page](#).~~

~~The following images are also approved and available from other sources.~~

If you're using the editable assets from this toolkit you can also use images you have sourced locally as long as you have appropriate permissions.

[Download](#)[Download](#)[Download](#)



Approved photos you can download

[Download](#)[Download](#)[Download](#)



Videos

‘CCTV footage of deliberate misuse’



Watch now and download

‘Officer, rail workers, level crossing managers talking first hand’



Watch now and download

‘Near miss on dog walk’



Watch now and download

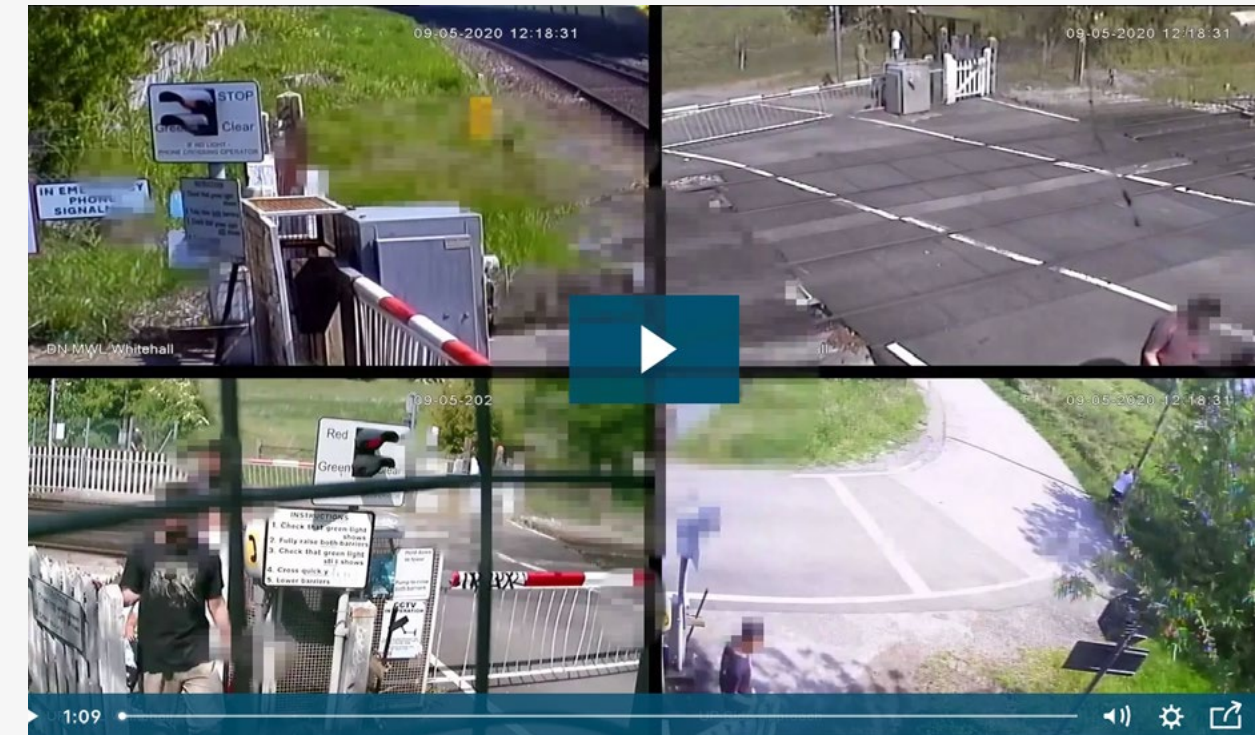
Videos

‘Brimsdown level crossing CCTV – May 2020’



Watch now and download

‘Whitehall level crossing CCTV – May 2020’

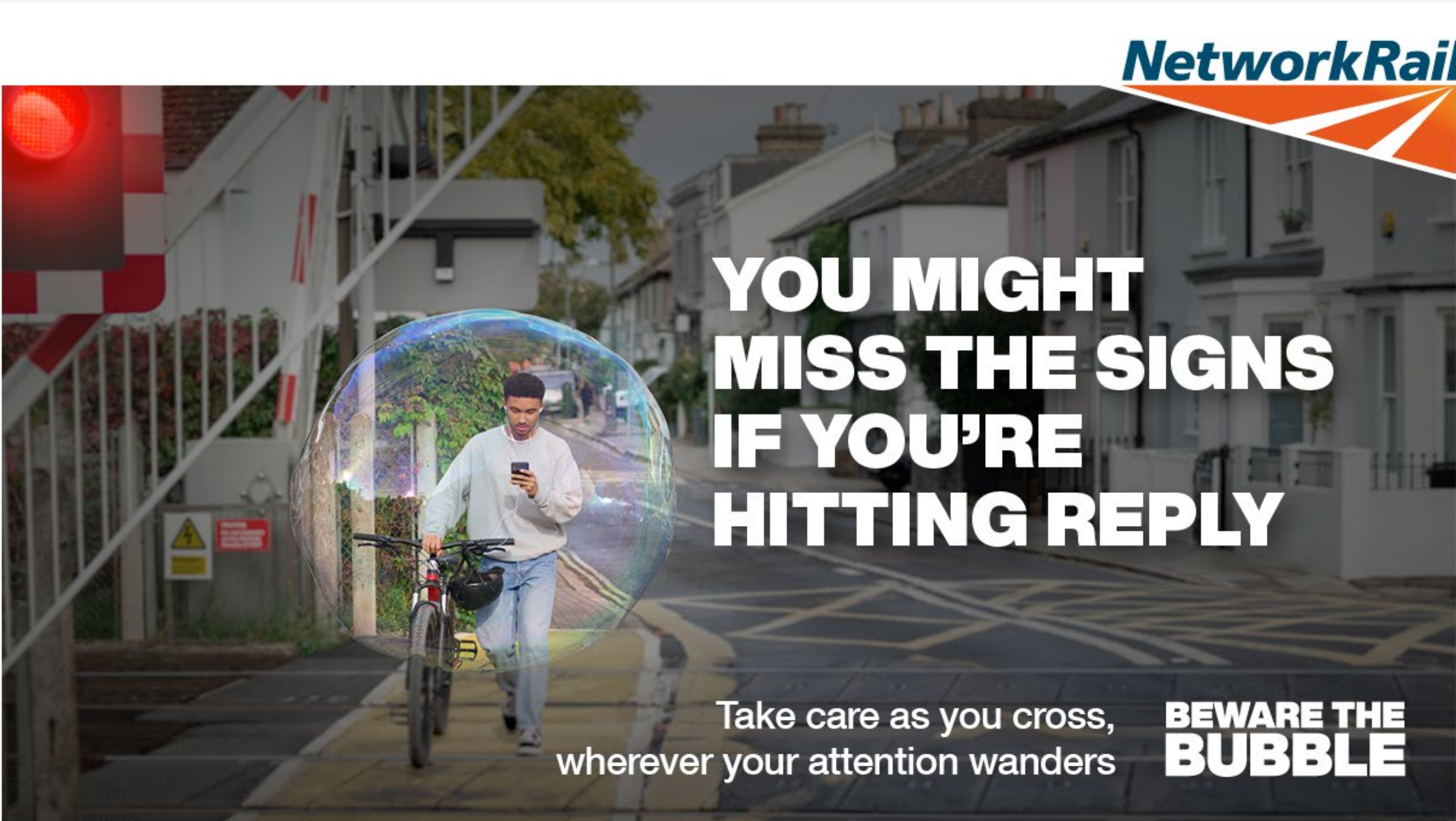


Watch now and download

Related Campaigns

Beware the bubble

Aimed at combating accidents caused by distraction, Beware the bubble encourages people to be more present and mindful of their surroundings when using the railway. We all live our lives ‘in a bubble’ but sometimes this can lead to injury or harm.



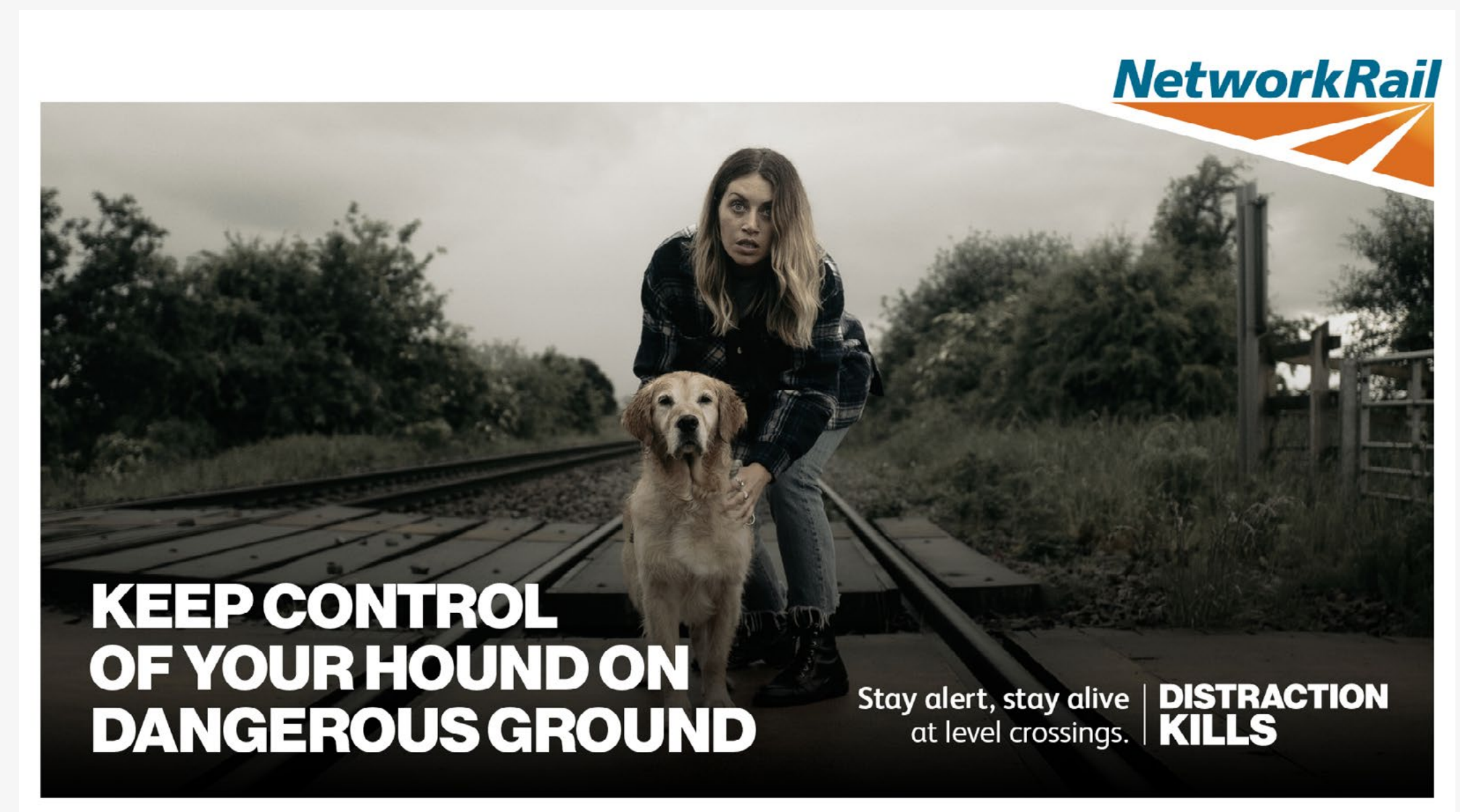
[Click here to view](#)



Related Campaigns

Distraction Kills

Distraction Kills is a new public safety campaign, that warns of the dangers of distractions when on and around Level Crossings. The campaign has been created following a spate of incidents at Level Crossings, which have sadly included several fatalities. The campaign focuses on two everyday scenarios, in which members of the public may encounter Level Crossings. These are when driving a car and when walking a dog. Brand-new hero videos have been created for each scenario, along with supporting print and digital assets.

[Click here to view](#)

Types of level crossing

There are nearly 6,000 level crossings on the rail network across England, Wales and Scotland. Each crossing varies in the level of protection it offers.

There are two broad groups

Passive crossings

Where there is no warning of a train’s approach other than by the train driver who may use the train horn. It is the road user or pedestrian’s responsibility to check whether it is safe to cross the line. Appropriate signage and instructions for proper use are provided at each location.

Passive crossings for road vehicles are generally used in rural areas. These crossings tend to be on private roads, for example to provide access to a farm or between a farm and fields.

Active crossings

Where the road vehicle or pedestrian is warned of the approach of a train through closure of gates, barriers, warning lights and/or alarms. The operation of an active crossing can either be automatic (barriers that are raised and lowered automatically) or manual, where a rail operator will work the crossing remotely.

Automatic barrier and manually controlled crossings (including those monitored by CCTV) are usually found on public roads with high levels of traffic.

Table 8

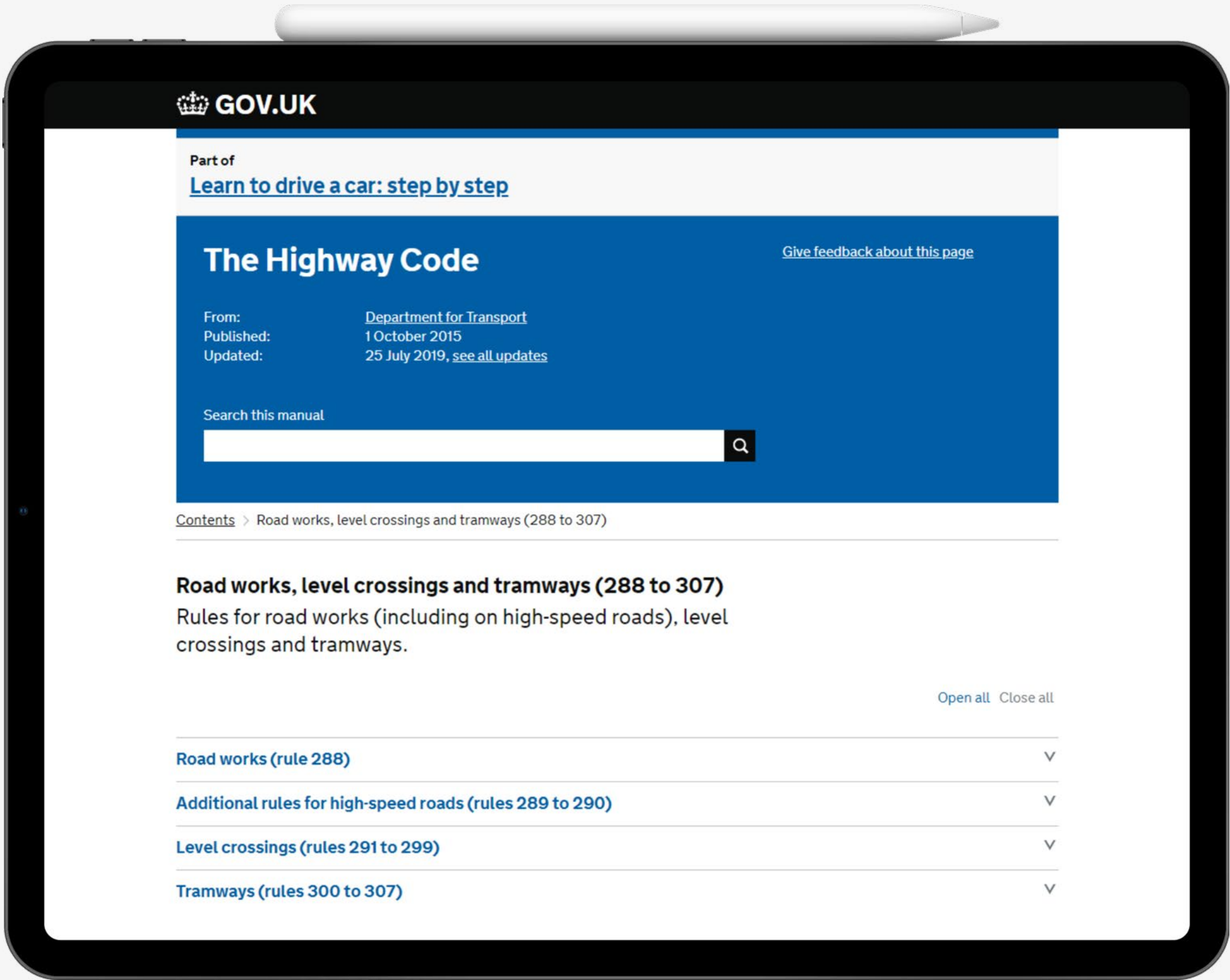
Level crossing categories by class and type.

Crossing type				Number
Passive		UWC-T	User-worked crossing with telephone	1541
		UWC	User-worked crossing	365
		OC	Open crossing	39
		FP	Footpath crossing	1815
		SBC	Station barrow crossing	85
Active	Manual	MCG	Manually controlled gate	107
		MCB	Manually controlled barrier	167
		MCB-OD	Manually controlled barrier with obstacle detection	114
		MCB-CCTV	Manually controlled barrier monitored by closed-circuit television	433
	Automatic	AHB	Automatic half-barrier	405
		AFBCL	Automatic full barrier crossing locally monitored	3
		ABCL	Automatic full barrier crossing locally monitored	60
		AOCL+B	Automatic open crossing locally monitored with barrier	61
		AOCL/R	Automatic open crossing locally or remotely monitored	23
		UWC-MSL	User-worked crossing with miniature stop lights	195
		FP-MSL	Footpath crossing with miniature stop lights	89
		SBC-WL	Station barrow crossings with lights	18
	Total			

Source: Network Rail (ALCRM), April 2022

Rule book information

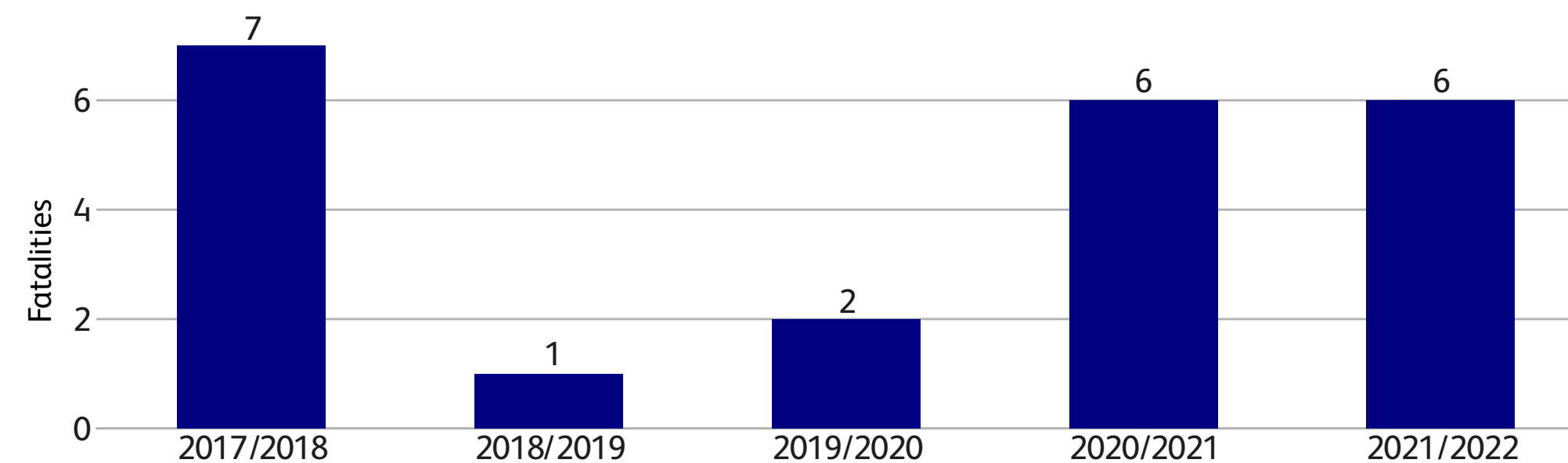
The Highway Code rules for level crossings and tramways



RSSB's Annual Health & Safety Report 2021/22

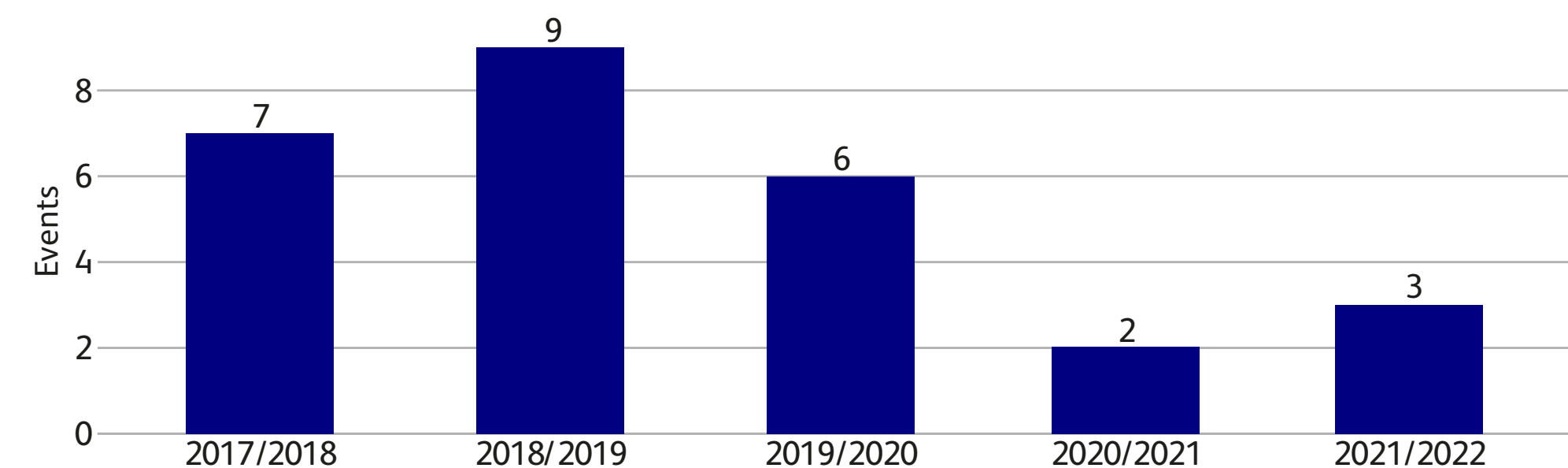
Standout statistics

Figure 4 Fatalities from being struck by a train



Whilst fatalities are at their lowest,
every death is one too many.

Figure 6 Collisions between trains and road vehicles at level crossings



RSSB’s Annual Health & Safety Report 2021/2022

Standout statistics

Figure 7. Road vehicle near misses at level crossings

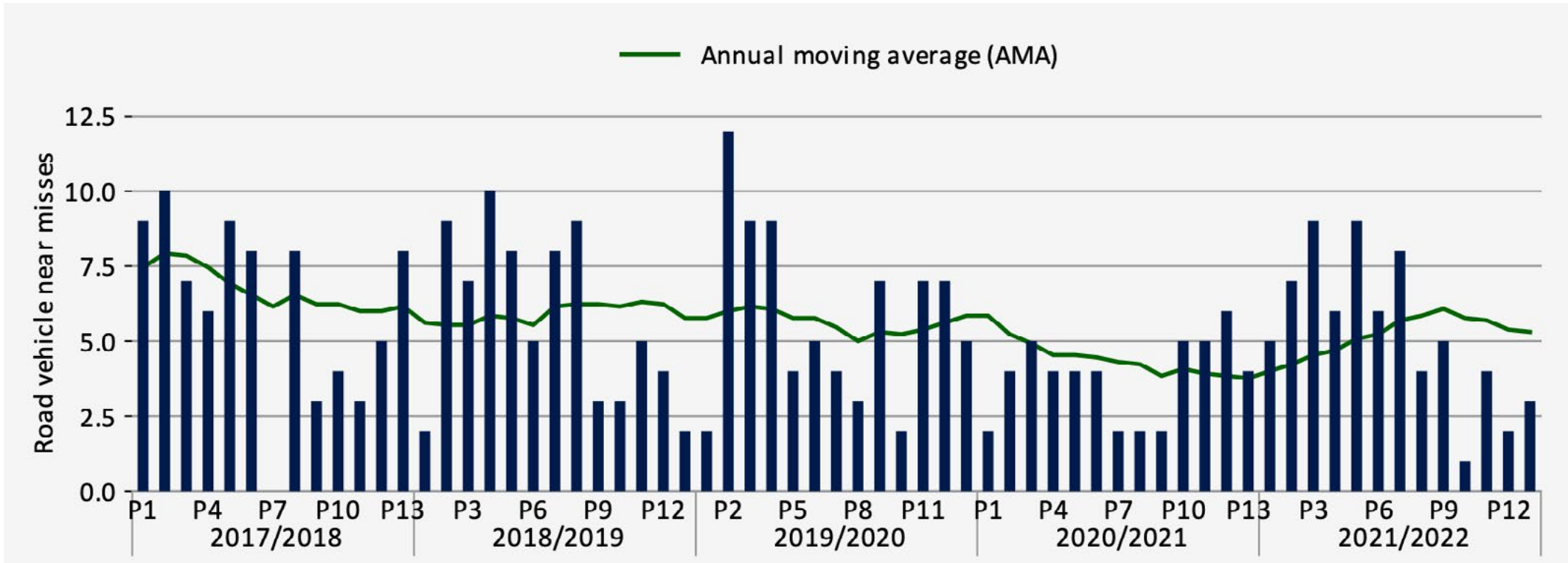


Figure 9. Fatalities and near misses involving dogs

