



Weather Resilience and Climate Change Adaptation

LNW Route Periodic Performance Report – 2018/2019 P4

Figure 1 provides an overview of the impact of different weather related events by day for period 4 in relation to delay minutes and PPM performance for LNW route. If adverse/extreme conditions were experienced by one or more TOC during a week, a yellow or red dot will indicate the performance of the TOC(s) in question. Weather events don't always cause drops in performance (e.g. extreme rainfall may not flood the railway) and therefore, performance on adverse/extreme days can be higher than expected.

Figure 1 Weather related PPM and delay minutes for P4 2018

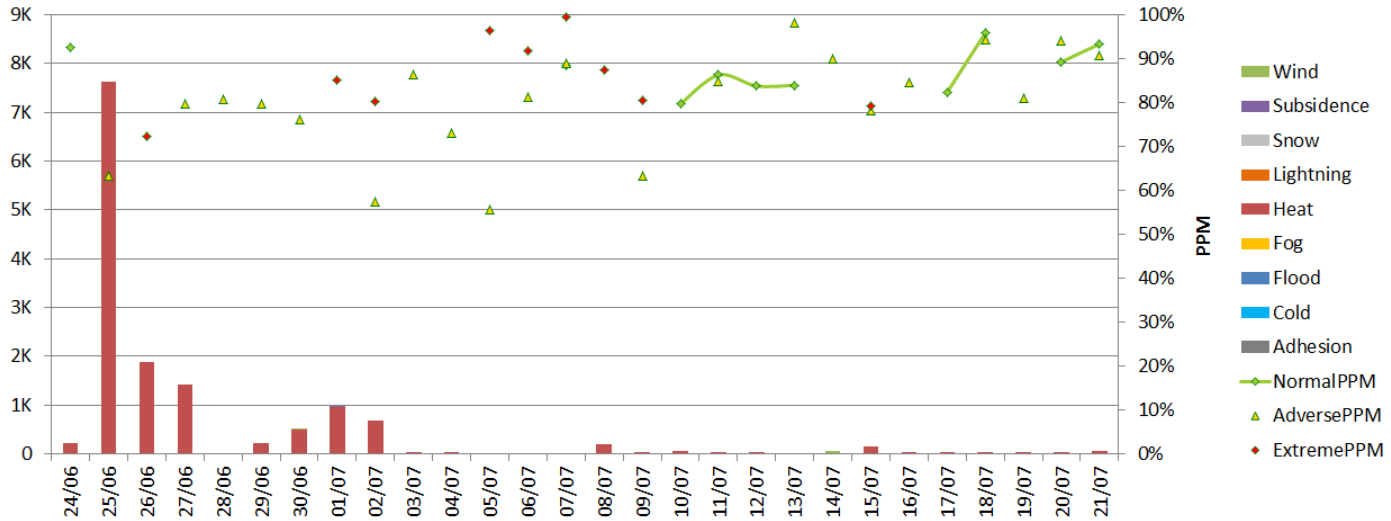
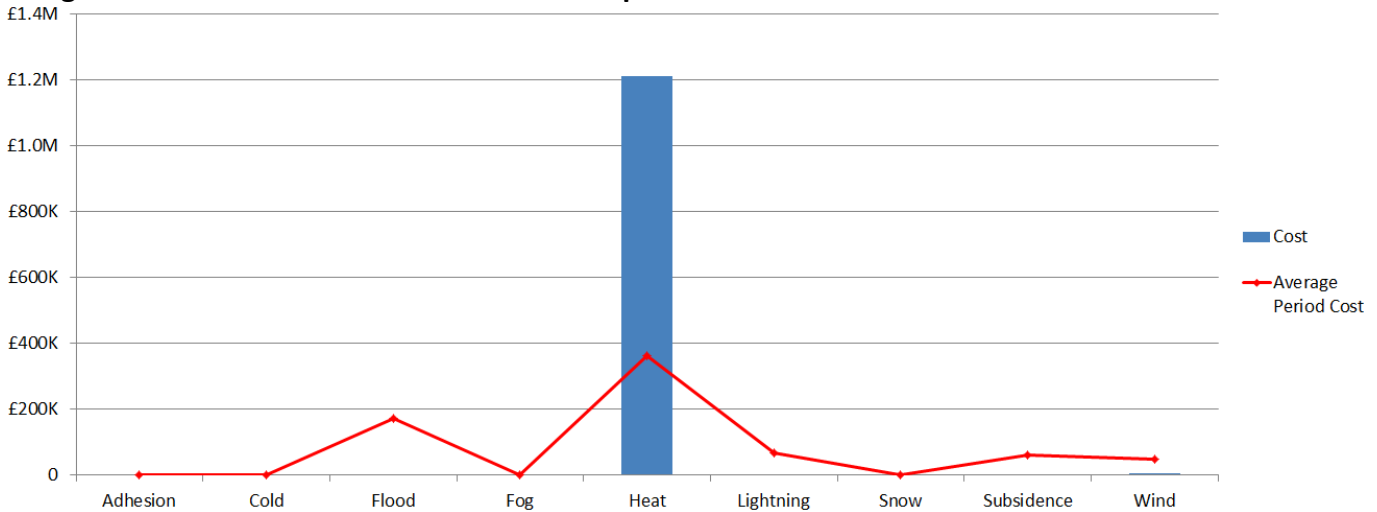


Figure 2 Weather related Schedule 8 cost impact for P4 LNW



Note that this figure relates to Schedule 8 cost and does not include OPEX or other costs.

Table 1 Top 10 weather related incidents P4

Date	IncidentDescription	stanoxSection	Route	Weather Category	Delay Minutes	Cost
25/06/2018	CRT 20MPH ESR UF HML	Bourne End Jn (Herts) : Watford Junction	LNW South	Heat	3936	£482,610.06
01/07/2018	20 ESR CRT HEAT SPEED UML XWZ	Weedon	LNW South	Heat	959	£156,191.68
25/06/2018	CRT 20MPH ESR DF WFJ	Watford Junction	LNW South	Heat	442	£73,344.50
25/06/2018	LAWJ LNK 20 MPH CRT ESR	Law Jn : Lanark	LNW North	Heat	1313.5	£63,160.03
27/06/2018	LANARKJ 20 MPH CRT ESR	Law Jn : Lanark	LNW North	Heat	763.5	£44,843.56
25/06/2018	CRT 20MPH ESR UF XOE	Bourne End Jn (Herts)	LNW South	Heat	286	£43,406.68
08/07/2018	20 ESR UM RUG XWZ	Rugby : Weedon	LNW South	Heat	174	£38,352.81
15/07/2018	20 ESR UM XWZ	Rugby : Weedon	LNW South	Heat	157	£28,179.52
25/06/2018	30/60 CRT DDF WSHWDH1	Whitacre Jn : Landor Street Jn	LNW South	Heat	532	£27,641.68
26/06/2018	LAWJ LANARK 20 MPH CRT ESR	Law Jn : Lanark	LNW North	Heat	593	£27,497.51