



Weather Resilience and Climate Change Adaptation

LNE/EM Route Periodic Performance Report – 2018/2019 P4

Figure 1 provides an overview of the impact of different weather related events by day for period 4 in relation to delay minutes and PPM performance for LNE/EM route. If adverse/extreme conditions were experienced by one or more TOC during a week, a yellow or red dot will indicate the performance of the TOC(s) in question. Weather events don't always cause drops in performance (e.g. extreme rainfall may not flood the railway) and therefore, performance on adverse/extreme days can be higher than expected.

Figure 1 Weather related PPM and delay minutes for P4 2018

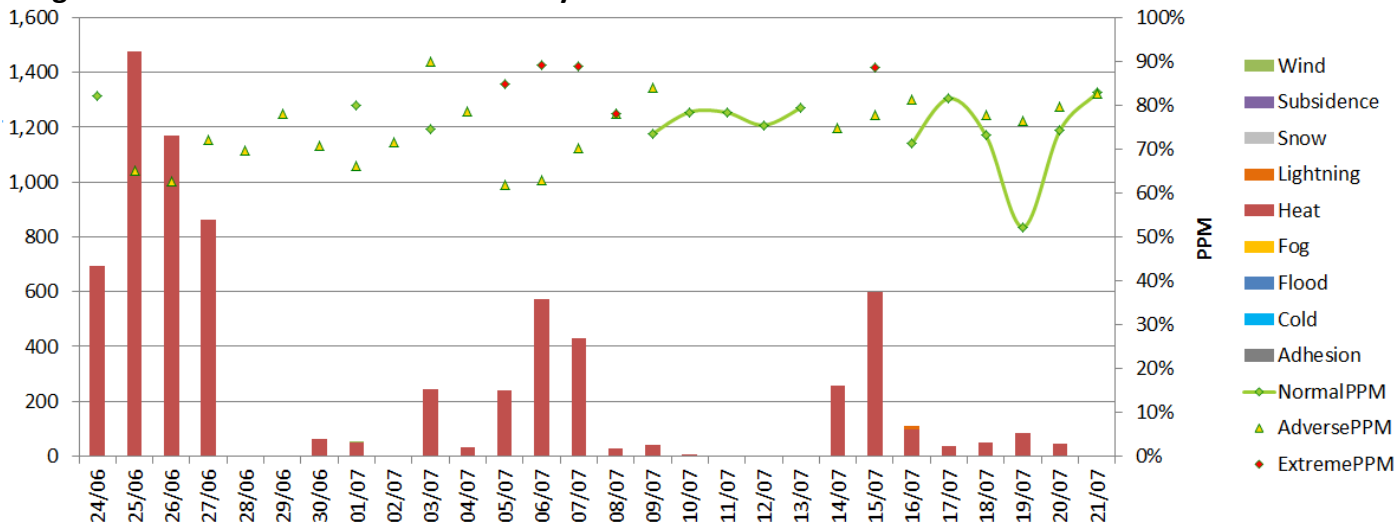
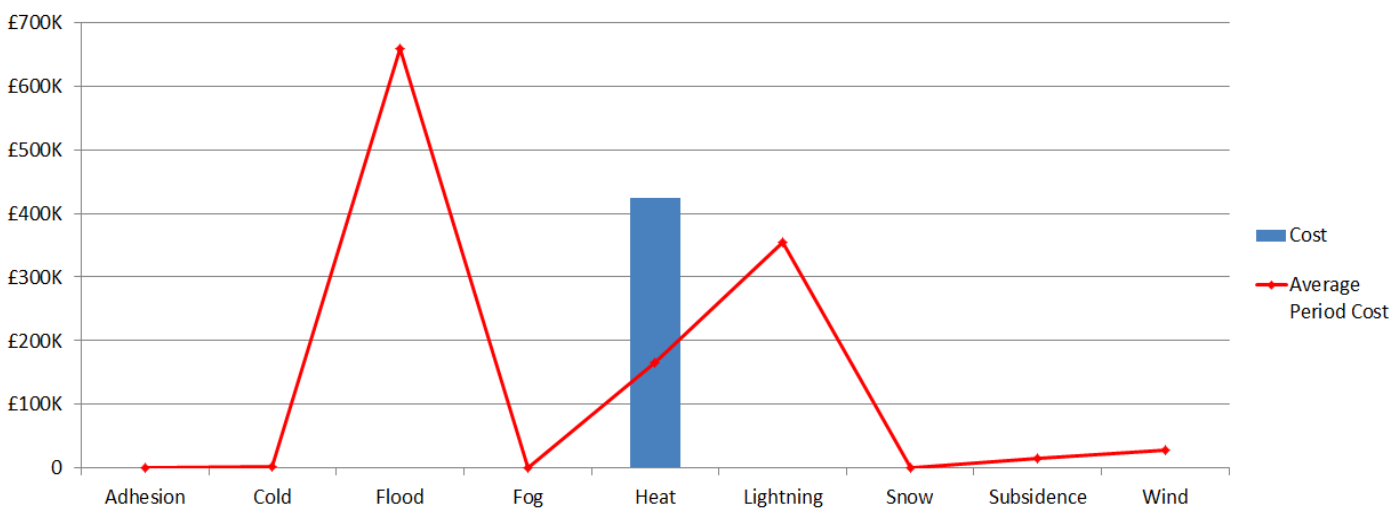


Figure 2 Weather related Schedule 8 cost impact for P4 LNE/EM



Note that this figure relates to Schedule 8 cost and does not include OPEX or other costs.

Table 1 Top 10 weather related incidents P4

Date	IncidentDescription	stanoxSection	Route	Weather Category	Delay Minutes	Cost
25/06/2018	MAS 20 ESR HEAT SPEED	Heaton Sth. Jn. : Newcastle	LNE	Heat	284	£50,090.65
26/06/2018	RET NNG 20 ESR HEAT SPEED	Retfdecml : Newark North Gate	LNE	Heat	241	£41,776.63
07/07/2018	NCL HEAT SPEED 20 ESR	Heaton Sth. Jn. : Newcastle	LNE	Heat	363	£37,517.13
15/07/2018	MAS 20MPH ESR HEAT SPEED	Heaton Sth. Jn. : Newcastle	LNE	Heat	289	£35,597.93
06/07/2018	MIL 20 ESR CRT UFL	St Albans City : West Hampstead Thameslink	EAST MIDLANDS	Heat	210	£27,427.75
25/06/2018	RET NNG 20 ESR HEAT SPEED	Retfdecml : Newark North Gate	LNE	Heat	131	£24,479.25
25/06/2018	HAMBLNJ DM 20 ESR HEAT SPEED	Hambleton North Jn : Temple Hirst Jn.	LNE	Heat	286	£24,113.81
24/06/2018	DORESNJ 20 MPH CRT SPEED	Dore Station Jn : Totley Tunnel East	LNE	Heat	335	£17,118.34
26/06/2018	HAMBLNJ DM 20 ESR HEAT SPEED	Hambleton North Jn : Temple Hirst Jn.	LNE	Heat	92	£16,250.02
26/06/2018	MAS 20 ESR HEAT SPEED	Heaton Sth. Jn. : Newcastle	LNE	Heat	182	£15,647.90