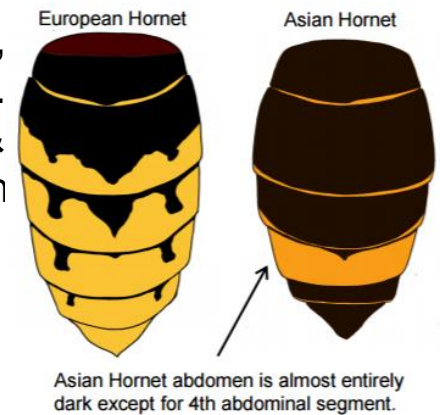


## Ecology – Asian hornet



Queens ~ 30mm, workers ~ 25mm. Slightly smaller & much darker than the native hornet with a distinctive yellow band on the abdomen.



### What?

- Asian hornet, *Vespa velutina*, first identified in UK in September 2016;
- Makes very large nests usually high in trees and man-made structures, but sometimes closer to the ground;
- Usually seen between April and November, and is particularly active in August and September;
- Likely introduction into the UK in imported soil or plants, or in untreated timber.

### Why?

- A highly aggressive predator of native insects and poses a significant threat to honey bees and other pollinators;
- Not notably aggressive towards humans and while their sting is painful, it's probably not as painful as one from a native hornet.

### DO

- ✓ In the unlikely event of being stung by this hornet, call NHS111 or seek medical advice if you have a serious allergic reaction
- ✓ Report findings on EcoReporter or PhotoReporter and send images to [alertnonnative@ceh.ac.uk](mailto:alertnonnative@ceh.ac.uk)

### DON'T

- ✗ Disturb an active nest

