

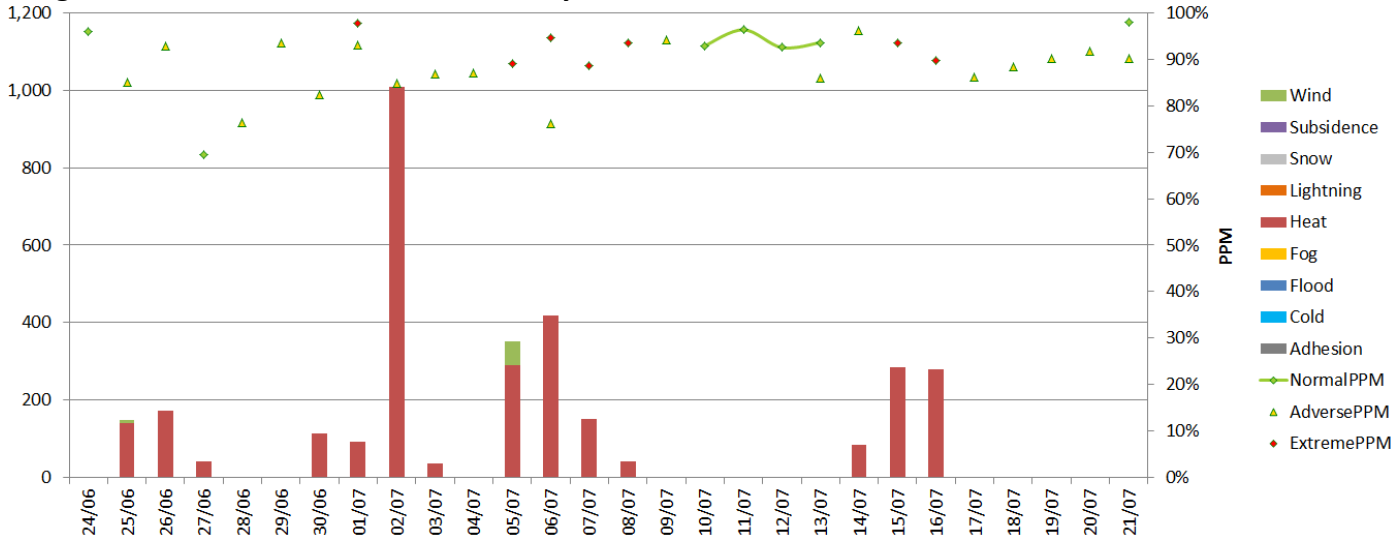


# Weather Resilience and Climate Change Adaptation

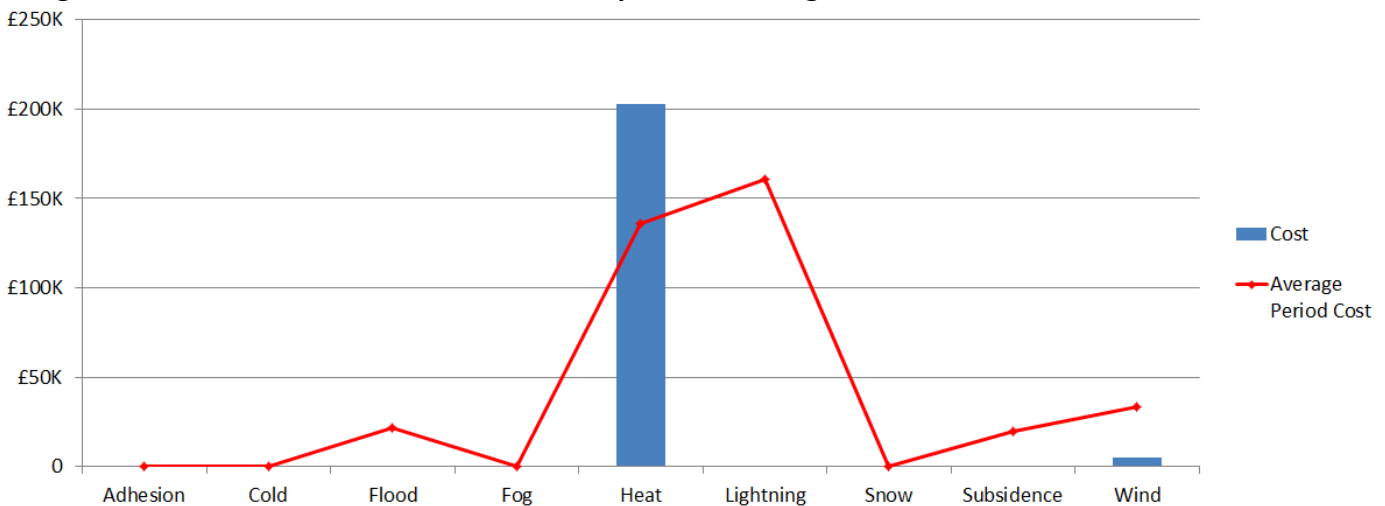
## Anglia Route Periodic Performance Report – 2018/2019 P4

Figure 1 provides an overview of the impact of different weather related events by day for period 4 in relation to delay minutes and PPM performance for Anglia route. If adverse/extreme conditions were experienced by one or more TOC during a week, a yellow or red dot will indicate the performance of the TOC(s) in question. Weather events don't always cause drops in performance (e.g. extreme rainfall may not flood the railway) and therefore, performance on adverse/extreme days can be higher than expected.

**Figure 1 Weather related PPM and delay minutes for P4 2018**



**Figure 2 Weather related Schedule 8 cost impact for P4 Anglia**



Note that this figure relates to Schedule 8 cost and does not include OPEX or other costs.

**Table 1 Top 10 weather related incidents P4**

Date	IncidentDescription	stanoxSection	Route	Weather Category	Delay Minutes	Cost
02/07/2018	BKG-WEH HEAT SPEED	Barking : West Ham	ANGLIA	Heat	728.5	£57,046.32
06/07/2018	CHM-WTM HEAT SPEED	Witham : Chelmsford	ANGLIA	Heat	342	£29,744.07
05/07/2018	MCH-XYE 20 MPH HEAT SPEED	March : Ely North Jn	ANGLIA	Heat	291	£19,522.80
02/07/2018	SNF-SOV OLE1 HEAT SPEED 02/07	Wickford : Shenfield	ANGLIA	Heat	168	£13,227.08
26/06/2018	BET-HAC HEAT SPEED DFL	Hackney Downs : Bethnal Green	ANGLIA	Heat	128	£8,202.90
07/07/2018	TLS-WON HEAT SPEED 20MPH	Walton-on-the-Naze : Thorpe-Le-Soken	ANGLIA	Heat	109	£6,070.27
15/07/2018	SRA-NAVRDJ HEAT SPEED U/L	Navarino Road Jn : Stratford	ANGLIA	Heat	151	£5,490.36
16/07/2018	MNE 20 ESR	March : Ely North Jn	ANGLIA	Heat	148	£5,097.41
05/07/2018	WLF BALLOON ON OLE	Cambridge : Audley End	ANGLIA	Wind	61.5	£5,072.30
02/07/2018	SOV-SNF OLE1 60 HEAT SPEED	Southend Victoria : Hockley	ANGLIA	Heat	52	£4,470.17