

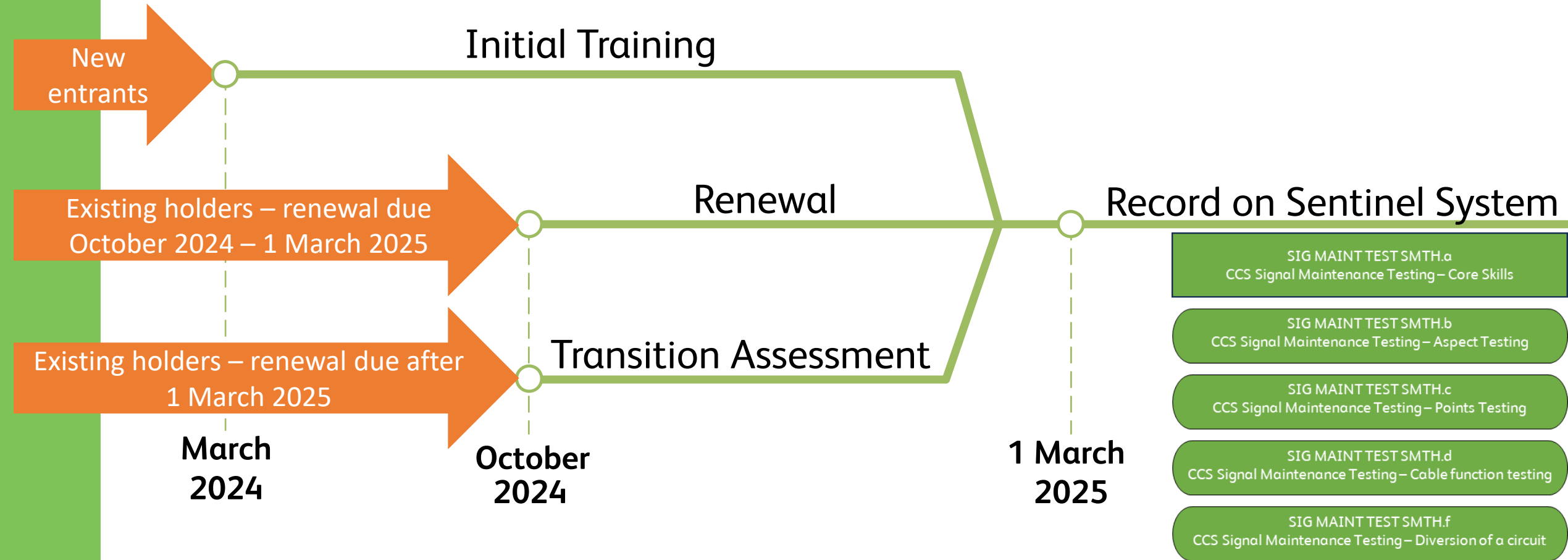
The way we manage SMTH
Competences across the industry is
changing from 1 March 2025.

Transitional Pathways available for you to transition
your SMTH authority to Work into Sentinel

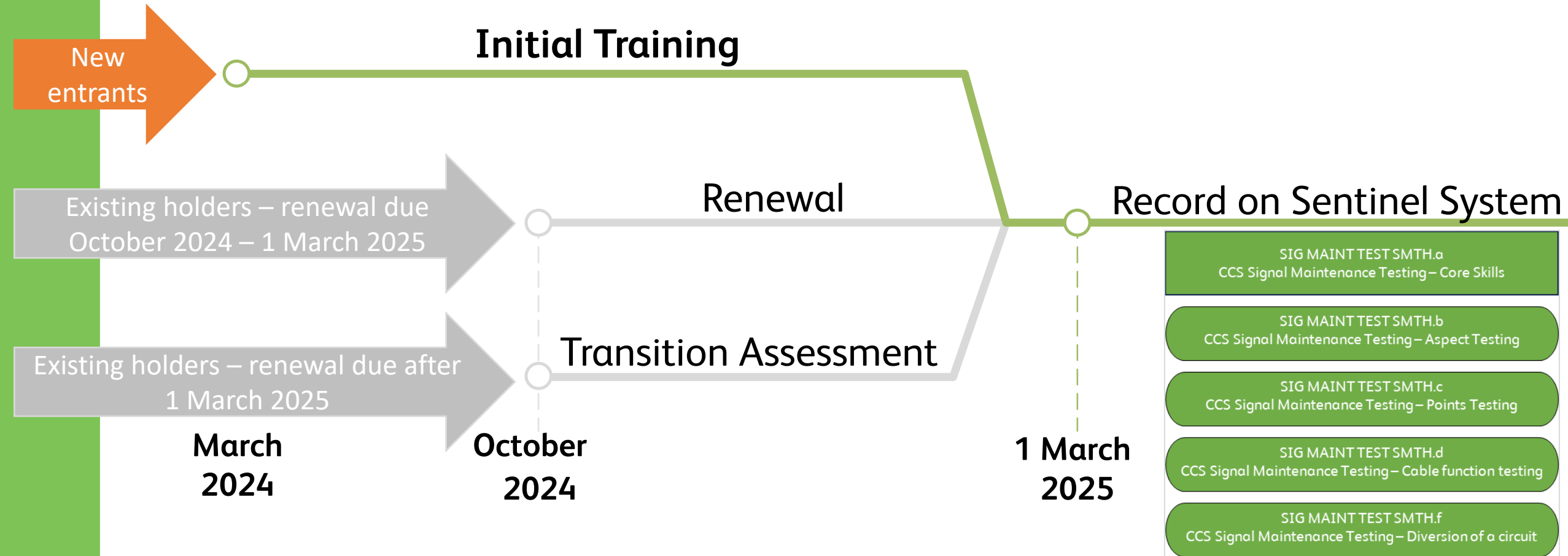


Providing technical leadership

Transfer process into Sentinel



Initial training pathway



Initial training pathway

Who can use this pathway?

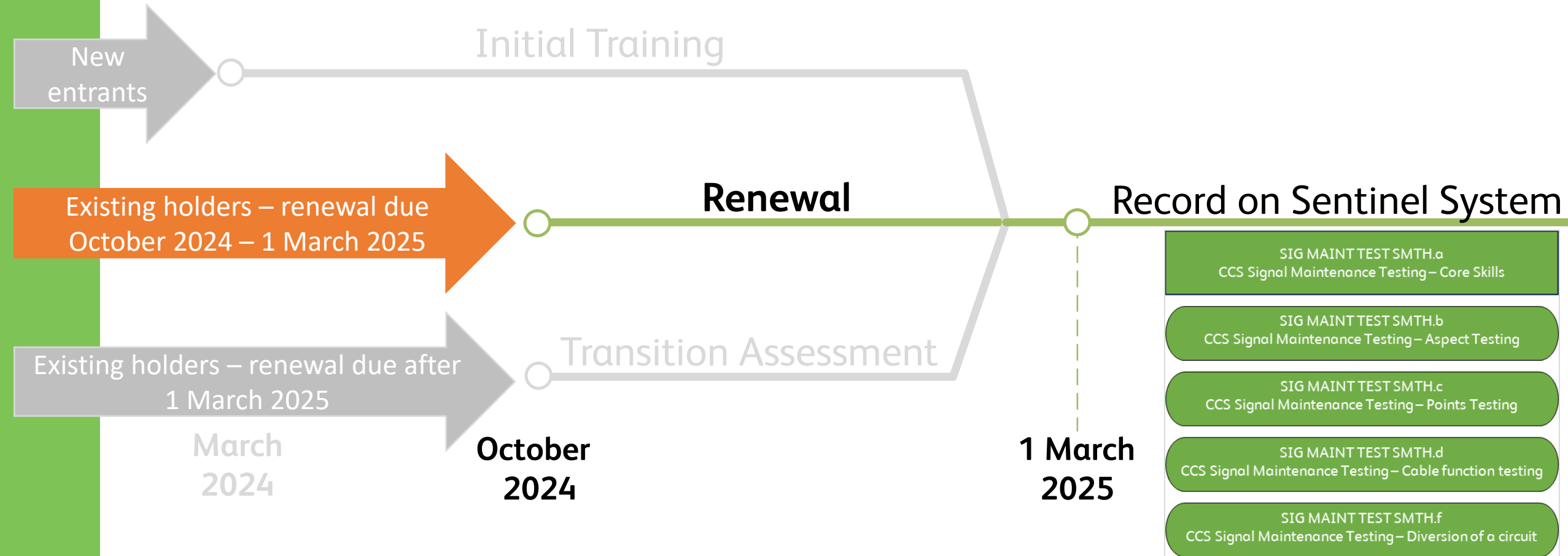
- Individuals who successfully complete the SMTH initial training course using the current NR training materials between March 2024 and 1 March 2025.

How do competences get recorded in Sentinel?

- Result will be uploaded into Sentinel by the project team or the training provider.



Renewal pathway



Renewal pathway

Who can use this pathway?

- Individuals who successfully complete the SMTH renewal event using the current NR training materials between 1 October 2024 and 1 March 2025.

Competence validity period?

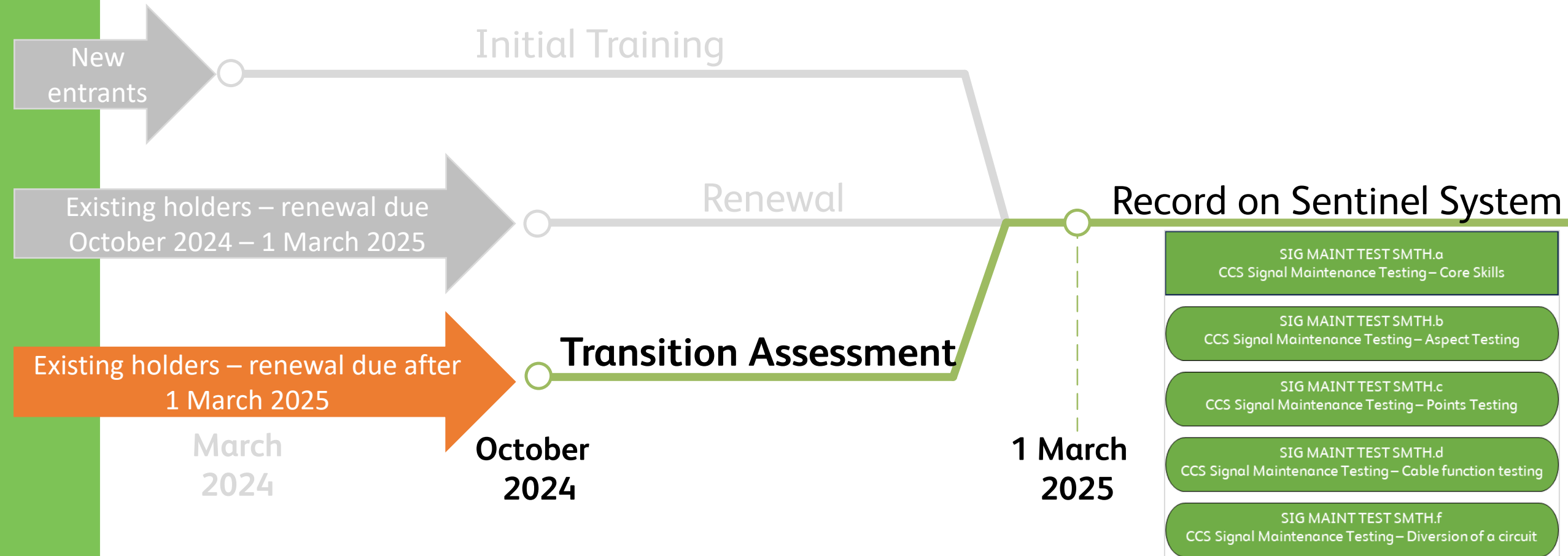
- 36 months from date of successful completion
- New competences cannot be added, only existing ones renewed and transitioned

How do competences get recorded in Sentinel?

- Result will be uploaded into Sentinel by the project team or the training provider.



Transition assessment pathway



Transition assessment pathway

Who can use this pathway?

- Individuals not eligible or following either of the other pathways, including:
 - Those whose SMTH competence does not expire until after 1 March 2025

What does this pathway involve?

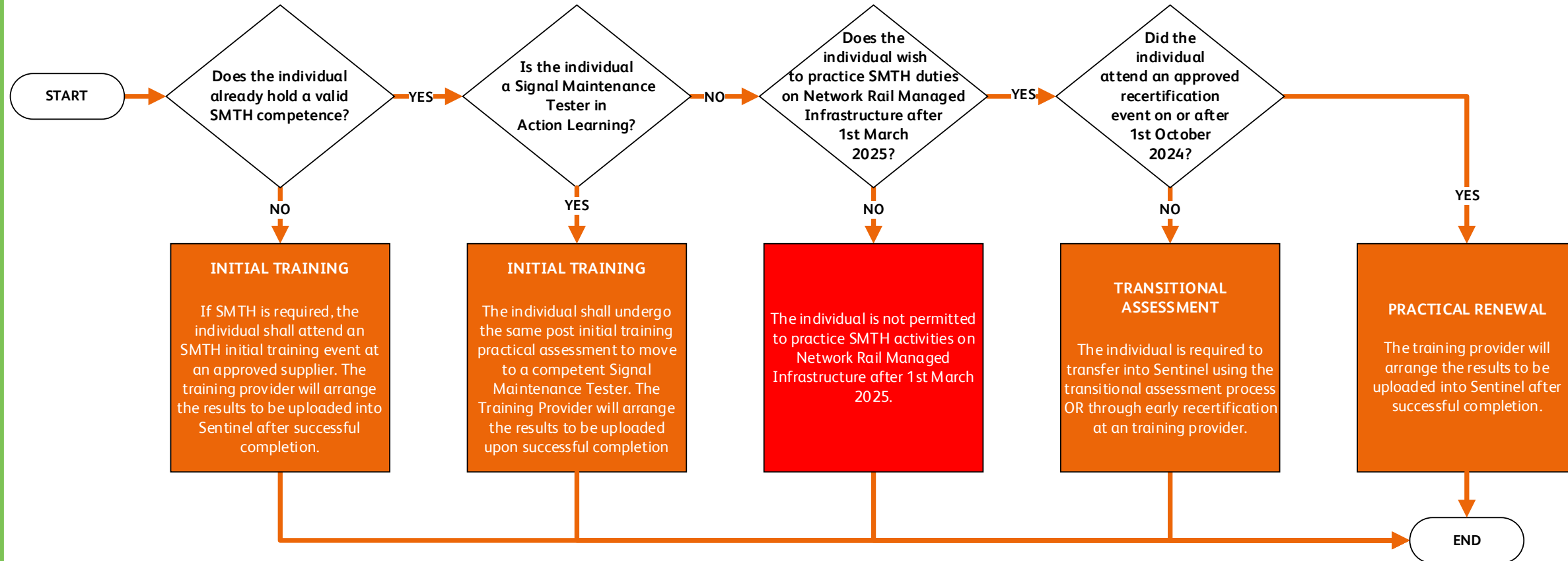
- Successful completion of an online transition assessment

Competence validity period?

- This assessment does not extend the validity of SMTH competences
- There will be no change to the individual's next renewal date
- New competences cannot be added, only existing ones transitioned



Flow Chart to support moving SMTH competences into the Sentinel System



Summary of SMTH Transition pathways

| Pathway into Sentinel | Users | Recorded in Sentinel by |
|-------------------------|---|--|
| Initial Training | Individuals who do not currently hold SMTH or completed their SMTH initial training after March 2024. | Training Providers or Network Rail Project Team. |
| Practical Renewal | Individuals who currently hold SMTH and undertake a SMTH renewal event before 01/03/2025. | Training Providers or Network Rail Project Team. |
| Transitional Assessment | Individuals who currently hold SMTH and are not transitioning their SMTH competences into Sentinel through the renewal pathway. | Network Rail Project Team. |



Next steps

- Any further information or questions please contact your Primary Sponsor in the first instance
- Please use the email address below for any SMTH transition assessment logon issues.

signallingcompetencyframework@networkrail.co.uk



<https://safety.networkrail.co.uk/safety/signal-and-level-crossing-engineering/smith-industry-competence-management-standardisation/>



**Technical
Authority**



Providing technical leadership