

# Level Crossing Toolkit

(2023/2024)





1

2

3

4

5

Your level crossing toolkit

Using the toolkit

Understanding the problem

RSSB report 2021/22

External messaging

Key messages by audience  
Key national statistics

Available resources

Downloadable resources  
Editable resources  
Printable items  
Promotional merchandise  
Educational resources  
Engage with local audiences  
Real life outcomes  
Case studies  
Approved photos  
Videos  
Related Campaign

Appendices

Types of level crossing  
Table 8  
Rule book  
RSSB report data 2020/21

## Using the toolkit

This toolkit has been created to help you deliver outreach work with members of the public on level crossing safety. There are no right or wrong ways to use the content. It is designed to be flexible to suit your needs.

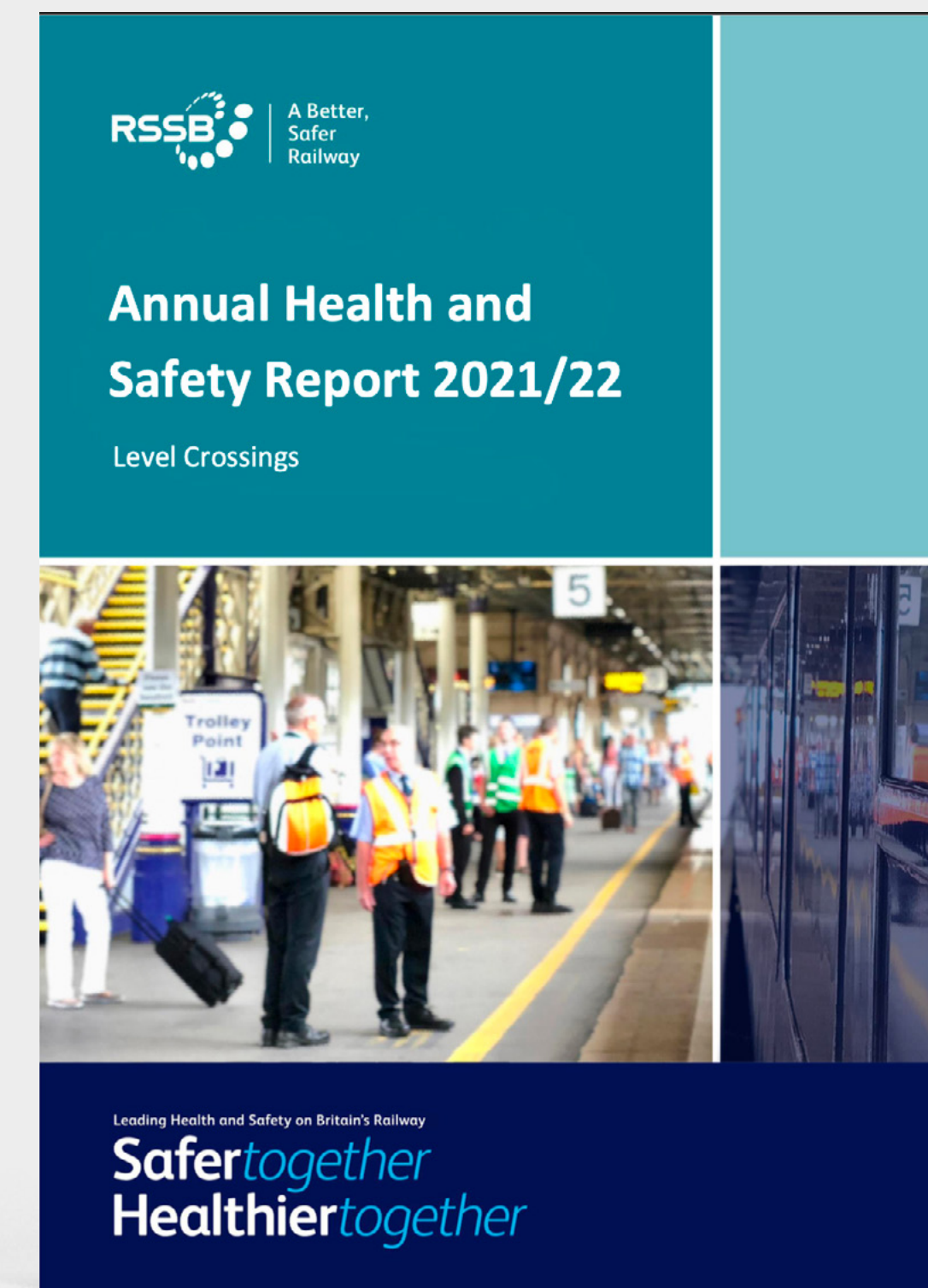
The content in the toolkit itself provides a national overview, along with key messages and facts approved for external use. Given the variety of ways in which you and your colleagues interact with the public, we have included a range of standardised resources, as well as links to resources that you can adapt for your needs.

This is your toolkit,  
so use it in the way  
you feel is most  
appropriate to deliver  
local messages about  
level crossing safety.

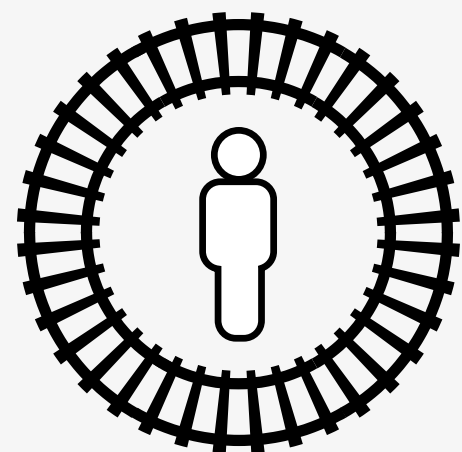
## RSSB's Annual Health and Safety Report 2023/24

### Headlines

- ” One vehicle occupant died after being struck by a train at a level crossing in 2023/24.
- ” There were four collisions with level crossing gates and two collisions with level crossing barriers, in 2023/24.
- ” Incidents at level crossings caused by user behaviour (such as near misses and incorrect usage) have increased. This has included an increase in near misses involving goods vehicles and dog walkers.



Key messages by audience

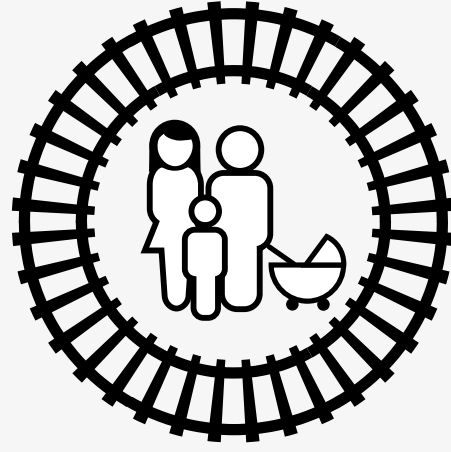


Pedestrians

“

Be patient and follow instructions on how to cross safely.

”

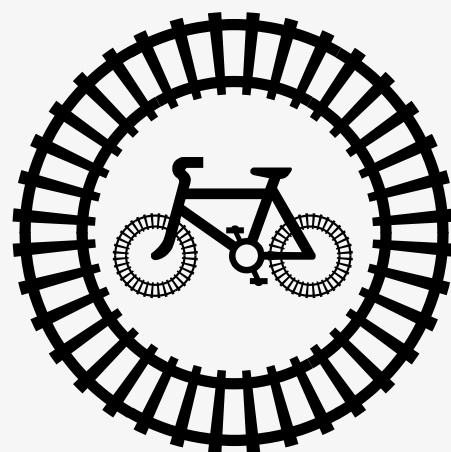


Parents

“

Help your children understand how to cross safely at level crossings.

”

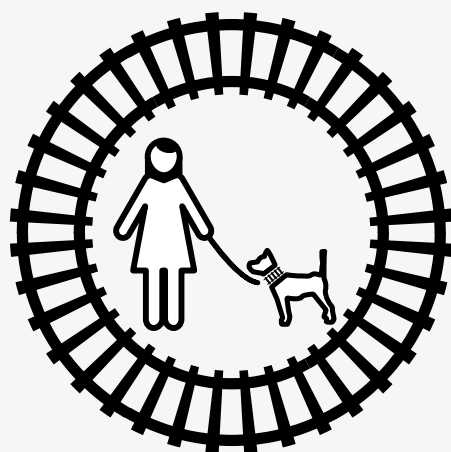


Cyclists

“

For your own safety, dismount and check both ways.

”

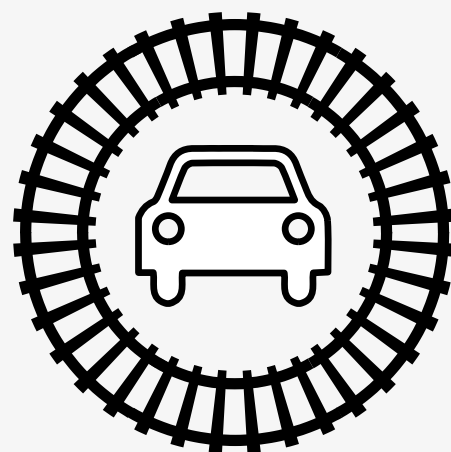


Dog walkers

“

Keep control of your dog and stay alert at level crossings.

”

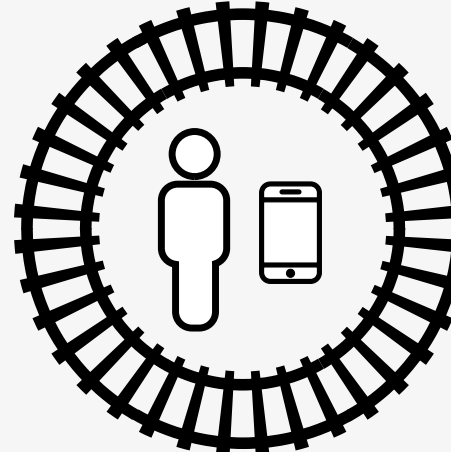


Drivers

“

Every vehicle must stop for red lights at level crossings.

”

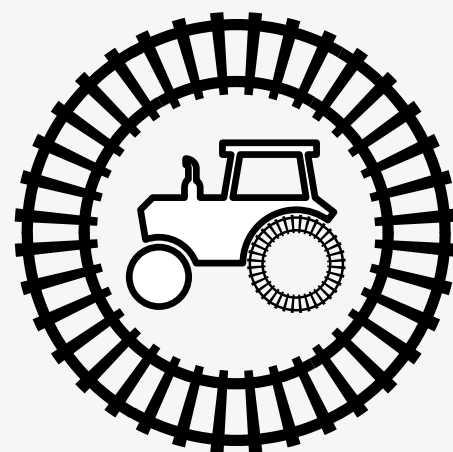


Young people

“

Being distracted at level crossings can kill.

”



Farm workers

“

Never stop on the crossing, even if the track looks clear.

”

Stop, look and listen



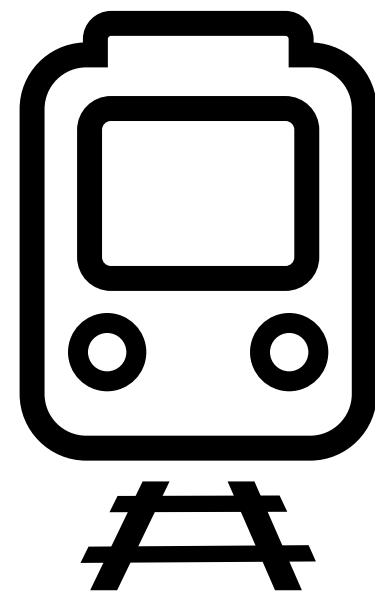
## Key national statistics



**1**  
accidental fatalities  
at level crossings  
in 2023/2024



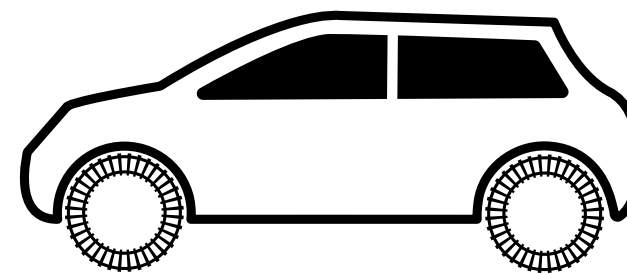
**24**  
accidental fatalities  
since 2019/20



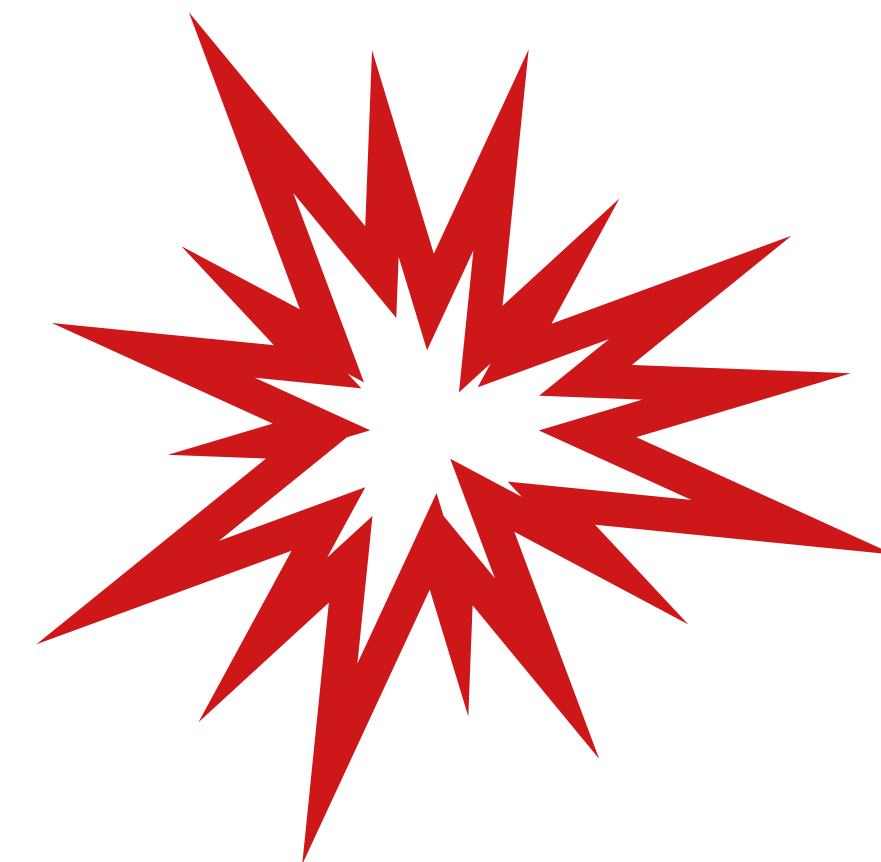
**426**

near misses in  
2023/24

**56**



vehicular near misses with  
road vehicles in 2023/24



**6**

collisions  
with gates  
or barriers  
at level  
crossings  
in 2023/24

Edit and download to add your own statistics

Downloadable resources

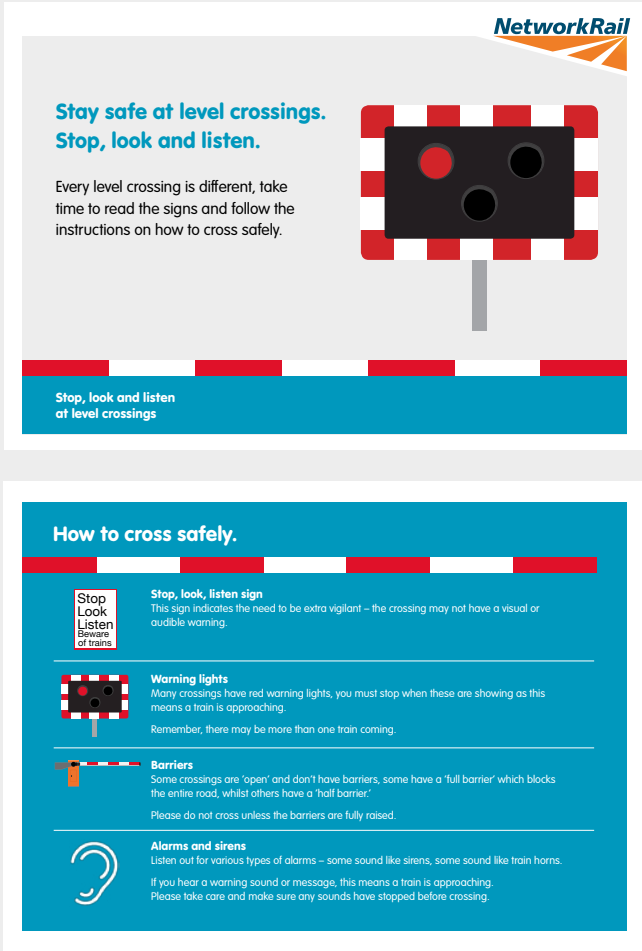
Poster



Download English

Download Welsh

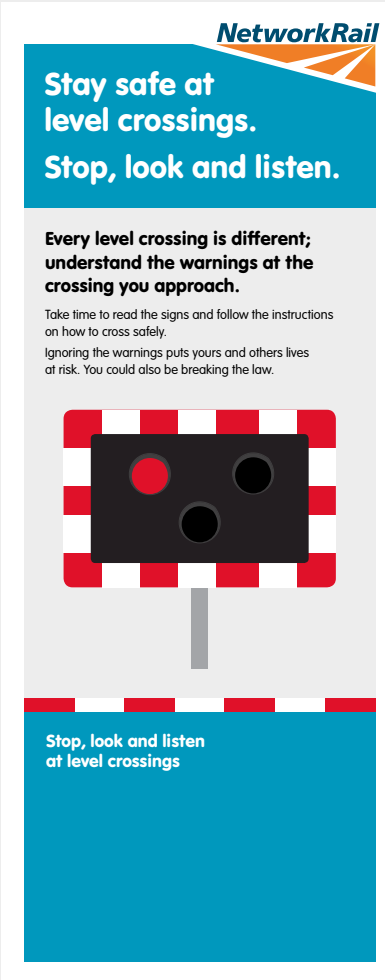
Postcard



Download English

Download Welsh

Pull-up banner



Download English

Download Welsh

Leaflet



Download English pedestrians

Download Welsh pedestrians

Download English drivers

Download Welsh drivers

Download English UWC

Download Welsh UWC

Editable resources to help you locally

We’ve developed editable and printable resources to help you start conversations with the public.

To access and use the templates:

- 1. Log in to Network Rail [Brand Hub](#) (you’ll need to register if using for the first time)
- 2. Go to the Templates section and click on the template you want to use.
- 3. Click the Create button.

Alternatively once logged into brand hub, you can click on the images in this toolkit to go directly to the template of your choice.

Within the templates you can choose suggested text for the following audience groups.

- Pedestrians
- Drivers
- Parents
- Cyclists
- Dog walkers
- Young people.
- Farm workers

You can also create custom text to target any other specific audiences you may have.

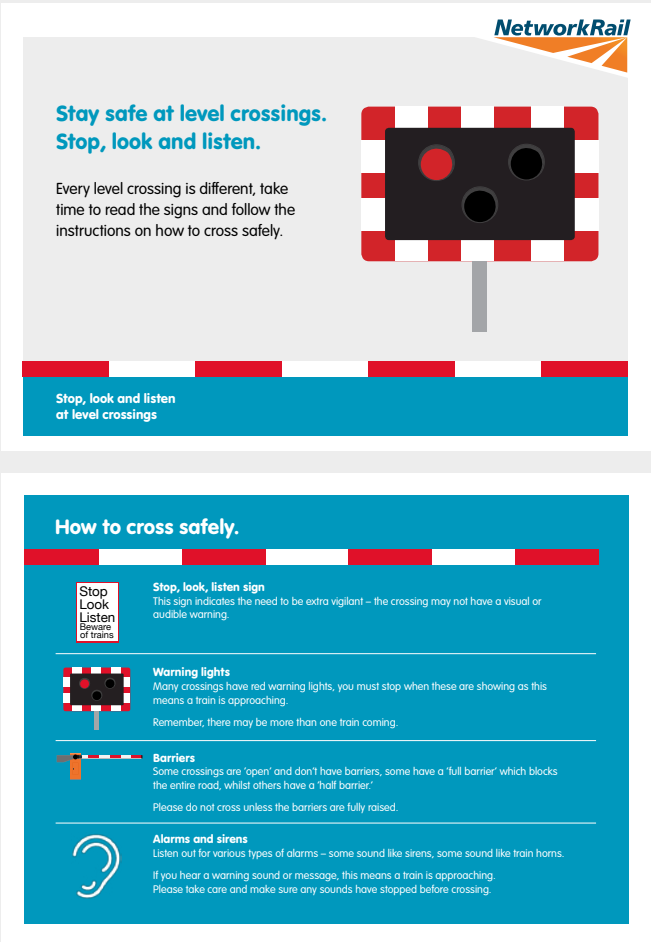
For further step by step guidance on how to use the brand hub please refer to our [editable template user guide](#).

If you have any questions about how to use the templates, visit the FAQs page on the Brand Hub or contact [marketing@networkrail.co.uk](mailto:marketing@networkrail.co.uk)



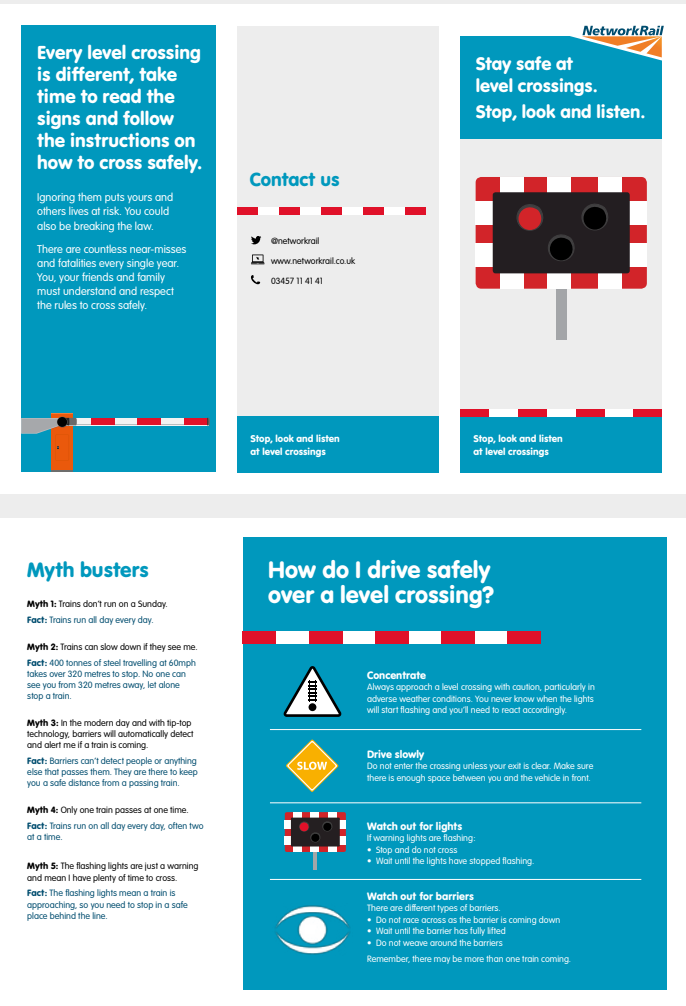
Editable resources to help you locally

Postcard



Edit and download

Leaflet



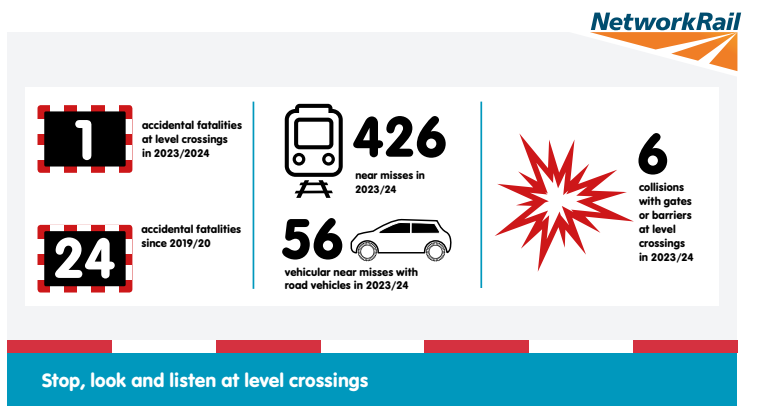
Edit and download

Poster



Edit and download

Infographic



Edit and download

## Printable items

Any printable items you download from Safety Central or create on the Brand Hub can be ordered through our partnership with APS Solutions for professional printing.

### Costs

There is some central budget available to support you to print resources to a professional standard. The budget remaining for 2023 is available on a first come first served basis. Please contact APS to understand whether there is sufficient budget available for your order.

Once the central budget has been used you can still order additional items using your own budget.

### Ordering process

To order printed items, please:

1. Create/ download your print artwork as a PDF on Brand Hub or Safety Central
2. Email the artwork to [nrprint@theapsgroup.com](mailto:nrprint@theapsgroup.com) Please include the reference CCS0323127708 in the email along with the following:
  - Quantity of each item required
  - Size of items required – you can order posters in any size required.
  - Your route
  - Contact name
  - Full delivery address

3. Deliveries will be made to the address provided within 72 hours of the receipt of the order.

If you have any questions, please contact APS Solutions on [nrprint@theapsgroup.com](mailto:nrprint@theapsgroup.com) or 0759 541 4257 (Option 1).

## Promotional merchandise

Looking for some goodies to hand out at events? We've created a range of safety branded merchandise to help you start safety conversations when out and about or at events.

To see the range of merchandise available and place an order please visit the [merchandise ecatalogue](#)

Please note prices shown within the ecatalogue are excluding delivery.

Delivery will take 2–3 weeks from placing the order.

Should you have any queries, call 01245 382600 or email [sales@allwag.co.uk](mailto:sales@allwag.co.uk)





## Educational resources

Switched On was launched by the rail industry in 2021 to enhance rail safety education provision for children across the UK and mitigate trespass on the rail network.

### [3-6 Year Olds](#)

### [7-11 Year Olds](#)

### [12-16 Year Olds](#)

## Welsh Teacher Guidance

### [3-6 Year Olds](#)

### [7-11 Year Olds](#)

### [12-16 Year Olds](#)



## Bring level crossing incidents to life when engaging local audiences by using your own or one of these real cases.

### ‘Near Miss with lawn mower’

A near miss was reported at Culross UWC Level Crossing in Fife, with a person operating a ride-on lawn mower which was stuck on the crossing. The driver assisted the driver and the ride-on lawn mower clear of the crossing.

### ‘Distracted Dog Walker’

A driver reported a near miss at Milner Court Footpath Crossing between Canterbury West and Sturry with a member of the public. The person was walking dogs over the crossing and wearing headphones as the train approached causing the driver to apply the emergency brake.

### ‘Stolen vehicle collides with high speed train’

A stolen Range Rover, crashed through the palisade fencing adjacent to the lowered level crossing barriers and collided with the rear of a high speed Azuma passenger train on the Down Main line at Rossington CCTV level crossing (line speed 125 mph). The rear of the train was damaged but there were no reported injuries. The driver of the car fled the scene.

### ‘Near miss’

The driver of a passenger train reported a near miss with a car that weaved around the lowered barriers and crossed ahead of their train on the Down Main line at Penybedd level crossing (line speed 75 mph).

### ‘Collision results in threatening injuries’

A train struck a Mercedes van at Shrewsbury Single line (line speed 120 km/h). The driver of the van was airlifted to hospital with life threatening injuries, but the train did not derail and there were no reported injuries to the 15 passengers. No request to use the crossing was made.



## Real life outcomes

‘Train crashes into car at level crossing in Frating near Colchester’

<https://www.bbc.co.uk/news/uk-england-essex-59560728>

‘Car in near-miss with train on Cumbria level crossing’

<https://www.bbc.co.uk/news/av/uk-england-cumbria-58202029>

‘Shocking CCTV footage shows woman laying on railway tracks to pose for photographs’

<https://www.networkrailmediacentre.co.uk/news/network-rail-slams-reckless-behaviour-at-tidemills-level-crossing-in-east-sussex>





## Case studies

**‘Safety failure at Elsenham rail deaths crossing 10 years on’**

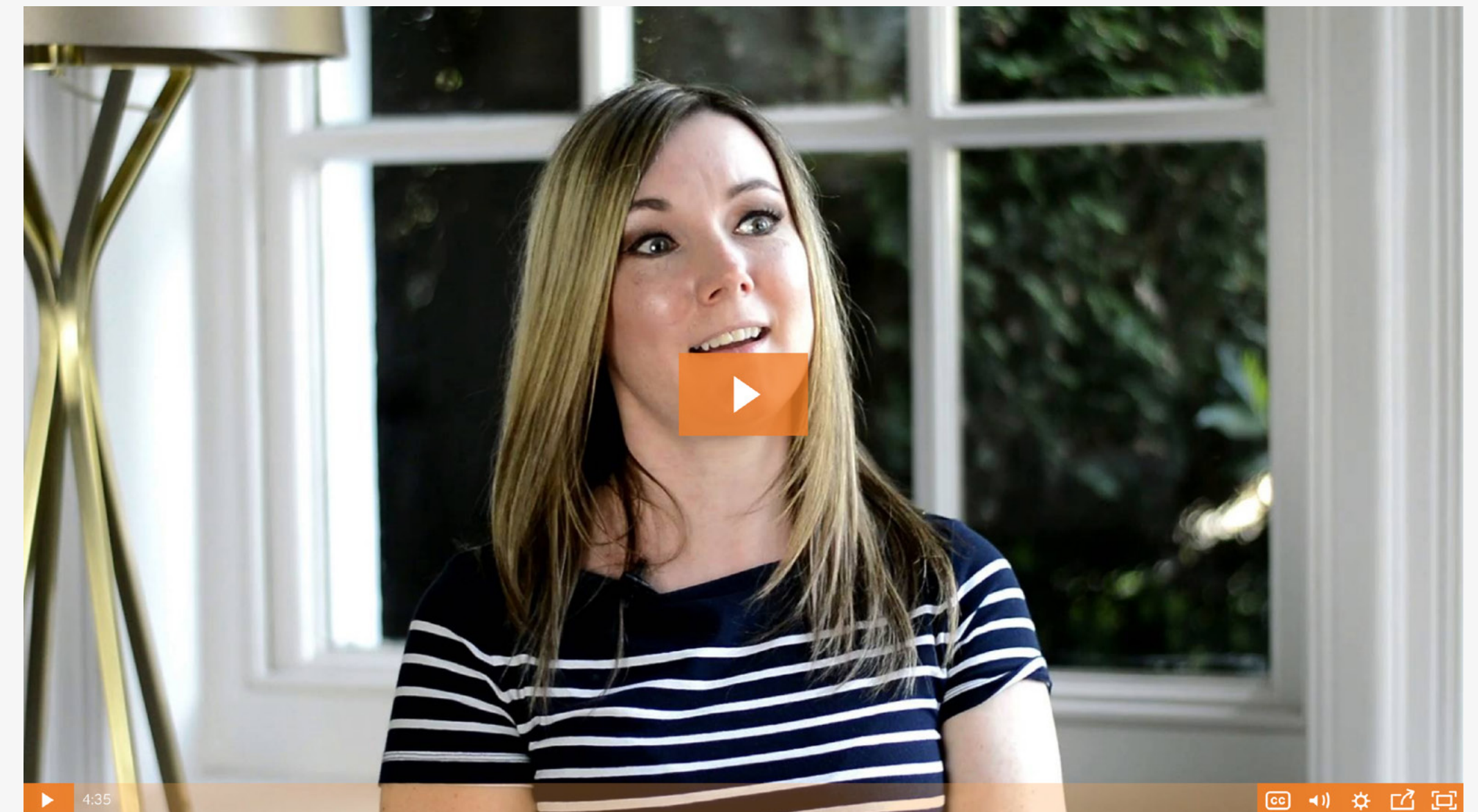
<https://www.networkrailmediacentre.co.uk/news/mother-leads-level-crossing-safety-event-in-elsenham-as-shocking-new-cctv-footage-released>

**‘Woman who lost leg at deadly level crossing renews plea to close it’**

<https://www.networkrailmediacentre.co.uk/news/woman-who-lost-her-leg-at-deadly-level-crossing-backs-plans-to-close-it>

**‘Tommy Ramshaw died after being hit by a train’**

<https://www.bbc.co.uk/news/uk-england-sussex-35797792>



Watch now and download



## Videos

‘CCTV footage of deliberate misuse’



Watch now and download

‘Officer, rail workers, level crossing managers talking first hand’



Watch now and download

‘Near miss on dog walk’



Watch now and download

‘Brimsdown level crossing CCTV – May 2020’



Watch now and download

‘Whitehall level crossing CCTV – May 2020’

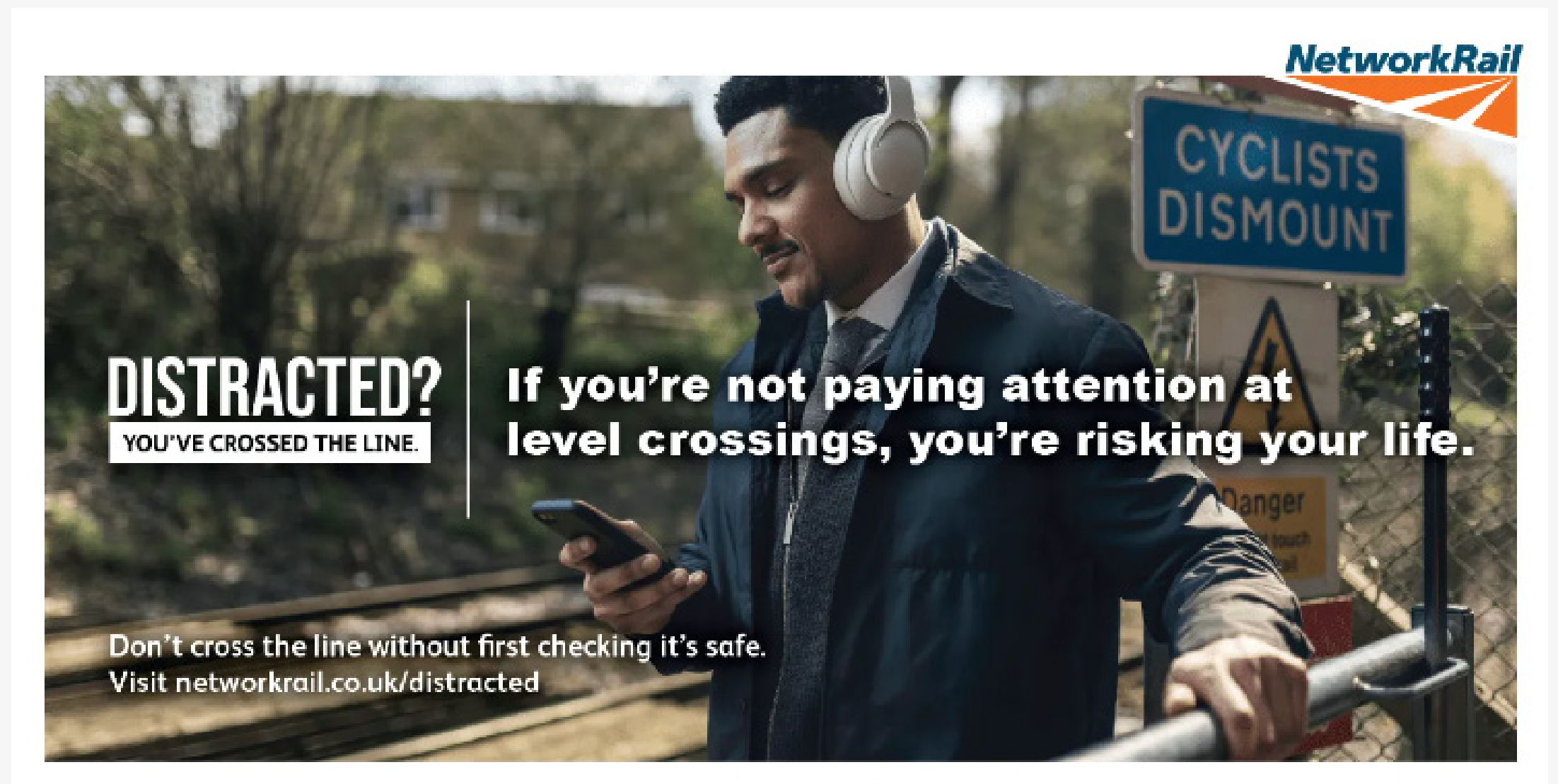


Watch now and download

## Related Campaigns

### Distracted? You've crossed the line

A public safety campaign, which aims to challenge behaviour that is the result of a distraction. It focuses on high-risk behaviours that a high portion of young adults (aged 18-34) don't see as dangerous. For example, looking at a phone while using a level crossing, listening to headphones while using a level crossing or even taking selfies on an a level crossing.



[Click here to view](#)



Types of level crossing

There are nearly 6,000 level crossings on the rail network across England, Wales and Scotland. Each crossing varies in the level of protection it offers.

There are two broad groups

Passive crossings

Where there is no warning of a train’s approach other than by the train driver who may use the train horn. It is the road user or pedestrian’s responsibility to check whether it is safe to cross the line. Appropriate signage and instructions for proper use are provided at each location.

Passive crossings for road vehicles are generally used in rural areas. These crossings tend to be on private roads, for example to provide access to a farm or between a farm and fields.

Active crossings

Where the road vehicle or pedestrian is warned of the approach of a train through closure of gates, barriers, warning lights and/or alarms. The operation of an active crossing can either be automatic (barriers that are raised and lowered automatically) or manual, where a rail operator will work the crossing remotely.

Automatic barrier and manually controlled crossings (including those monitored by CCTV) are usually found on public roads with high levels of traffic.

Table 8

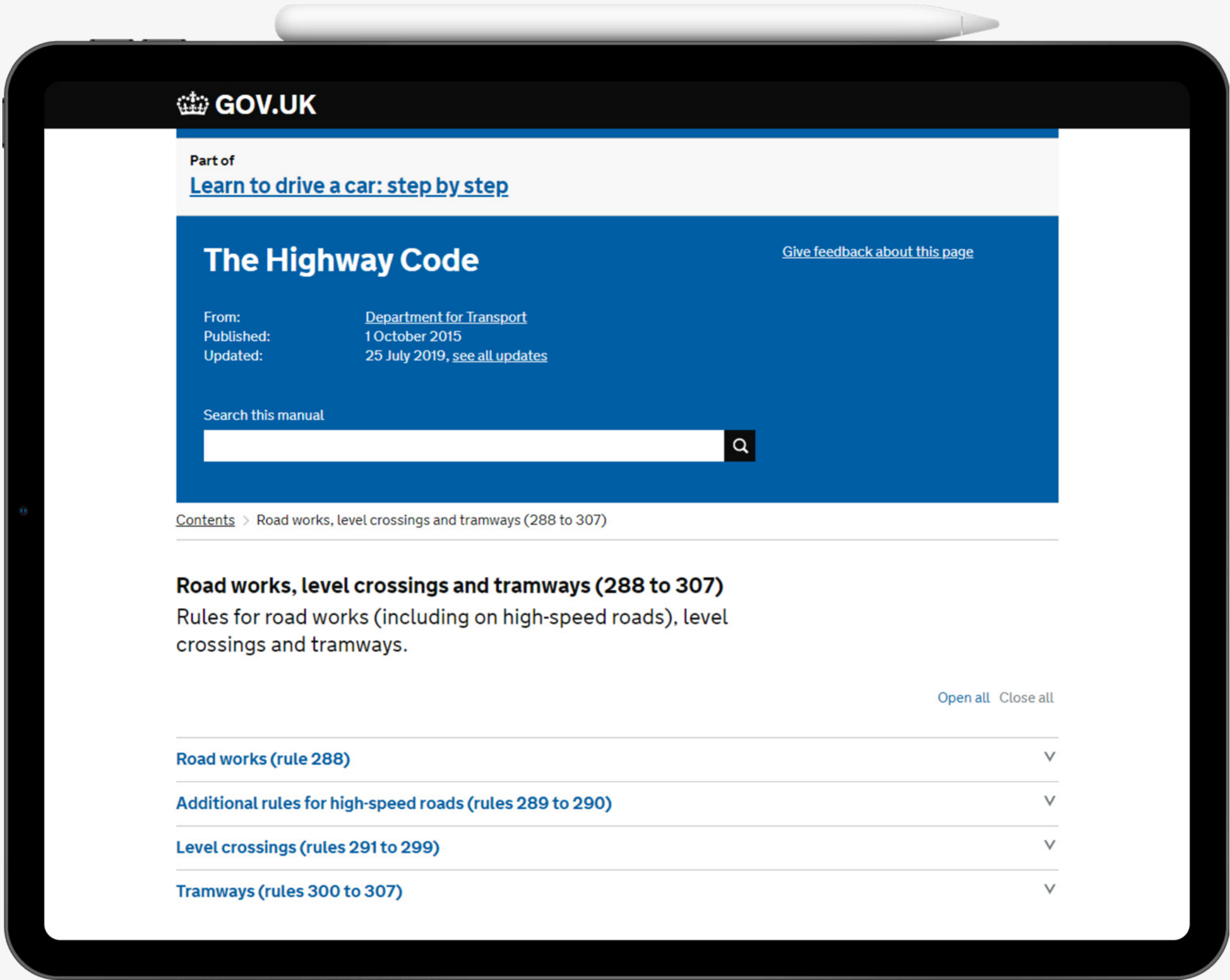
Level crossing categories by class and type.

| Crossing type |           |                                     | Number   |     |
|---------------|-----------|-------------------------------------|--|-----|
| Passive       | UWC-T     | User-worked crossing with telephone | 1498   |     |
|               | UWC       | User-worked crossing                | 331  |     |
|               | OC        | Open crossing                       | 36   |     |
|               | FP        | Footpath crossing                   | 1768   |     |
|               | SBC       | Station barrow crossing             | 80   |     |
| Active        | Manual    | MCG                                 | Manually controlled gate   | 108 |
|               |           | MCB                                 | Manually controlled barrier  | 162 |
|               |           | MCB-OD                              | Manually controlled barrier with obstacle detection                | 127 |
|               |           | MCB-CCTV                            | Manually controlled barrier monitored by closed-circuit television | 436 |
|               | Automatic | AHB                                 | Automatic half-barrier   | 401 |
|               |           | AFBCL                               | Automatic full barrier crossing locally monitored                  | 3   |
|               |           | ABCL                                | Automatic full barrier crossing locally monitored                  | 62  |
|               |           | AOCL+B                              | Automatic open crossing locally monitored with barrier             | 60  |
|               |           | AOCL/R                              | Automatic open crossing locally or remotely monitored              | 21  |
|               |           | UWC-MSL                             | User-worked crossing with miniature stop lights                    | 245 |
|               |           | FP-MSL                              | Footpath crossing with miniature stop lights                       | 137 |
|               |           | SBC-WL                              | Station barrow crossings with lights                               | 18  |
| Total         |           |                                     | 5493   |     |

Source: Network Rail (ALCRM), April 2022

Rule book information

The Highway Code rules for level crossings and tramways

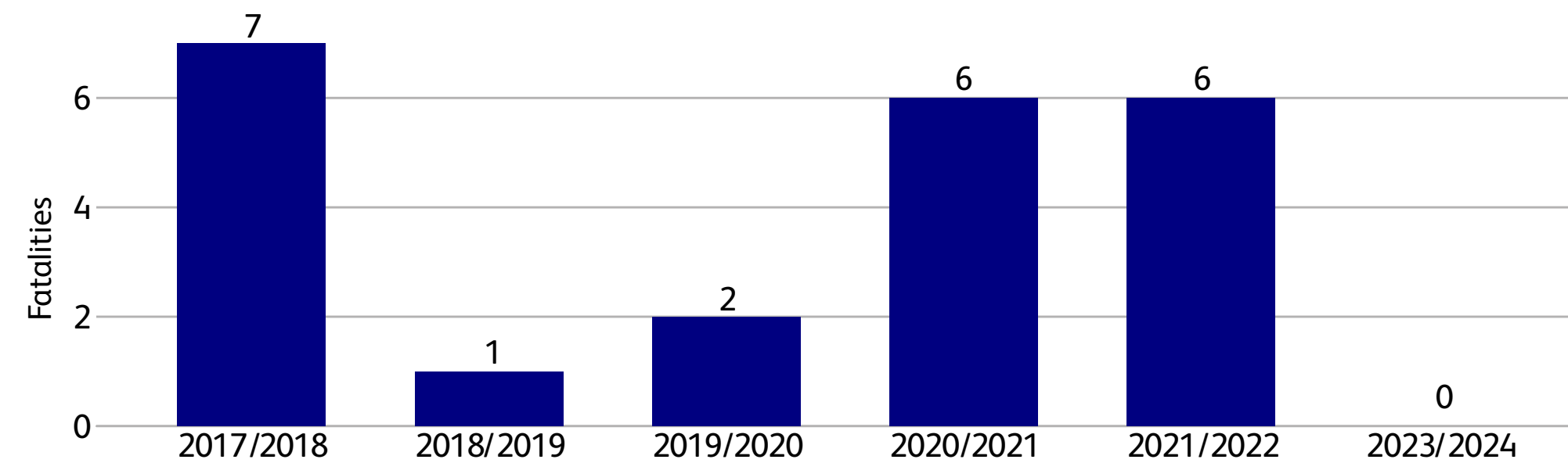




## RSSB's Annual Health & Safety Report 2023/2024

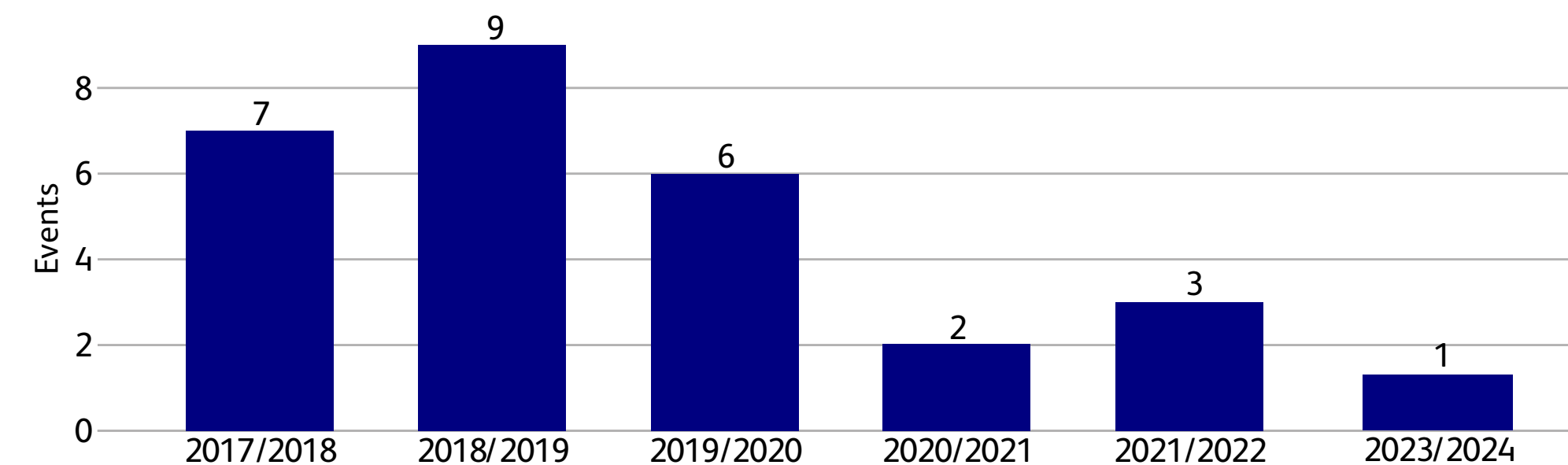
### Standout statistics

Figure 4 Fatalities from being struck by a train



Whilst fatalities are at their lowest,  
every death is one too many.

Figure 6 Collisions between trains and road vehicles at level crossings



# RSSB’s Annual Health & Safety Report 2023/2024

## Standout statistics

Figure 7. Near misses with road vehicles

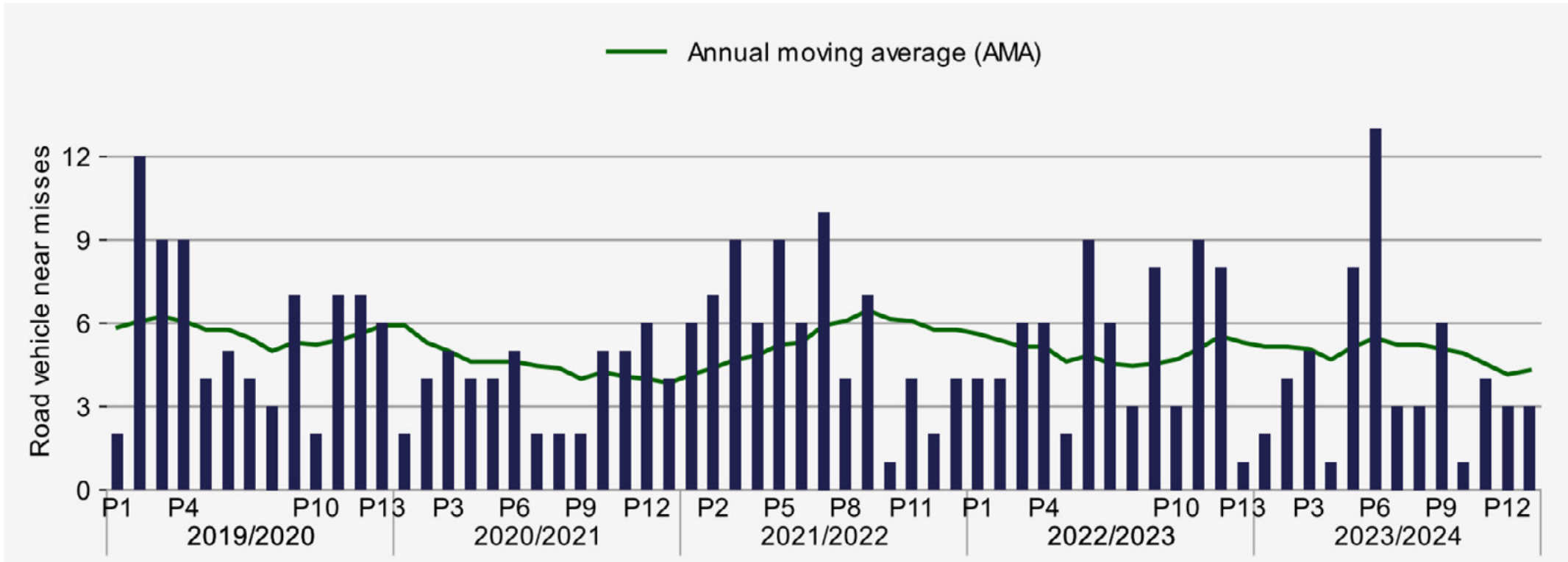


Figure 9. Near misses involving pedestrians

